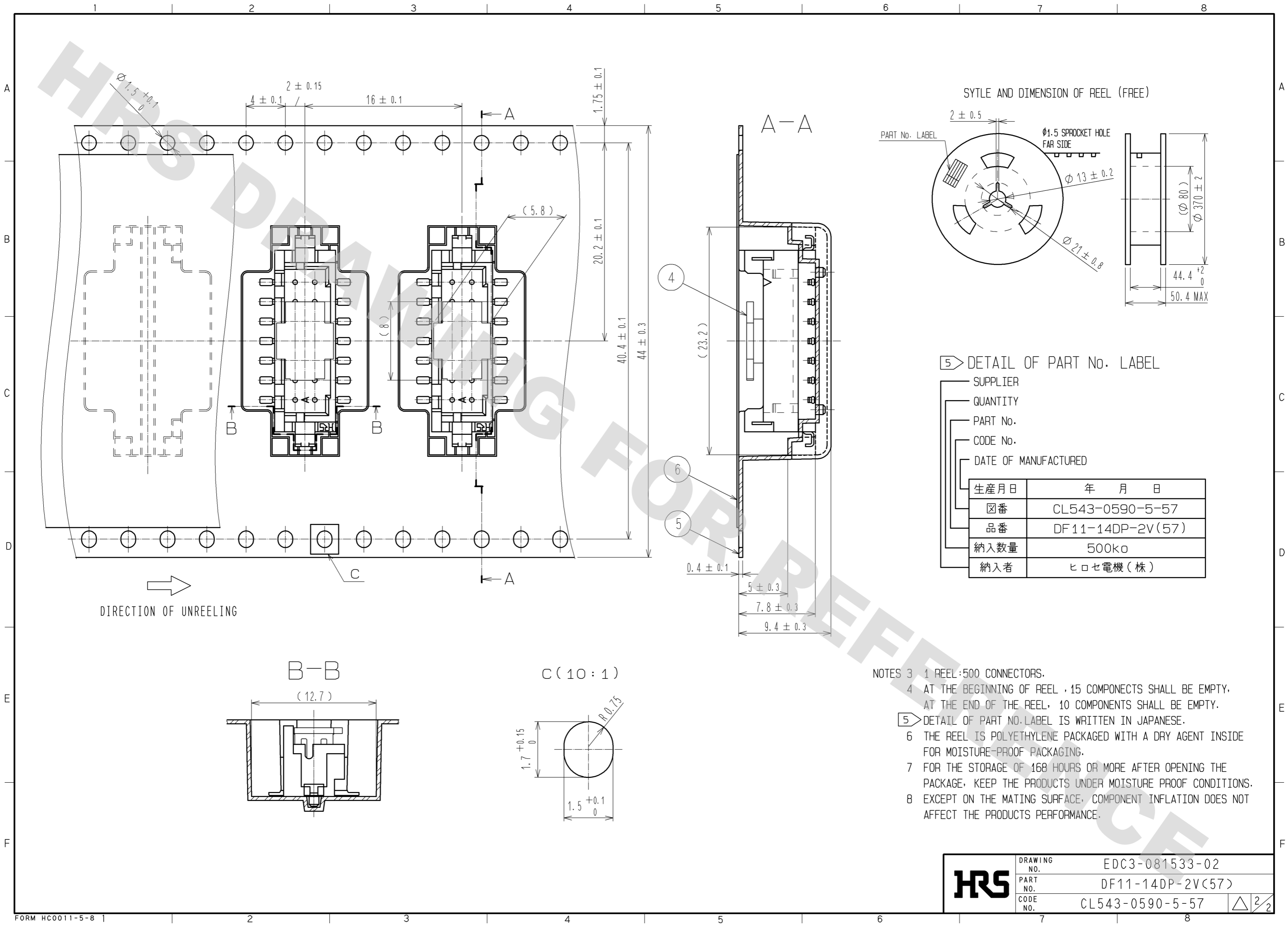


DRAWING FOR REFERENCE: This is subject to change without notice
08/11/2012



5) DETAIL OF PART No. LABEL

SUPPLIER	
QUANTITY	
PART No.	
CODE No.	
DATE OF MANUFACTURED	
生産月日	年 月 日
図番	CL543-0590-5-57
品番	DF11-14DP-2V(57)
納入数量	500ko
納入者	ヒロセ電機(株)

- NOTES
- 1 REEL:500 CONNECTORS.
 - 4 AT THE BEGINNING OF REEL, 15 COMPONECTS SHALL BE EMPTY. AT THE END OF THE REEL, 10 COMPONENTS SHALL BE EMPTY.
 - 5) DETAIL OF PART No.LABEL IS WRITTEN IN JAPANESE.
 - 6 THE REEL IS POLYETHYLENE PACKAGED WITH A DRY AGENT INSIDE FOR MOISTURE-PROOF PACKAGING.
 - 7 FOR THE STORAGE OF 168 HOURS OR MORE AFTER OPENING THE PACKAGE, KEEP THE PRODUCTS UNDER MOISTURE PROOF CONDITIONS.
 - 8 EXCEPT ON THE MATING SURFACE, COMPONENT INFLATION DOES NOT AFFECT THE PRODUCTS PERFORMANCE.

HRS	DRAWING NO.	EDC3-081533-02
	PART NO.	DF11-14DP-2V(57)
	CODE NO.	CL543-0590-5-57
		\triangle 2/2

Mouser Electronics

Authorized Distributor

Click to View Pricing, Inventory, Delivery & Lifecycle Information:

[Hirose Electric:](#)

[DF11-14DP-2V\(57\)](#)