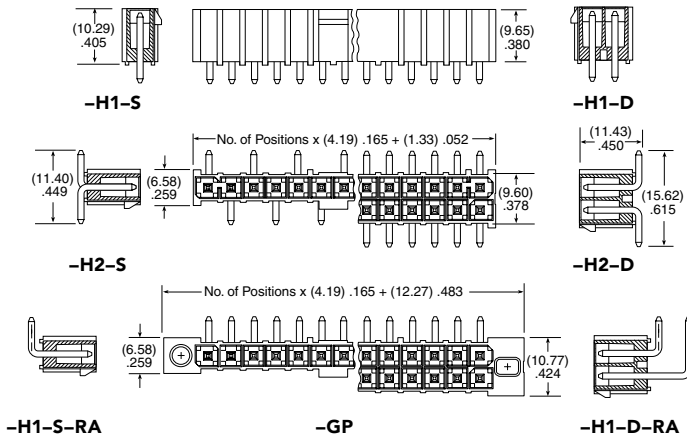
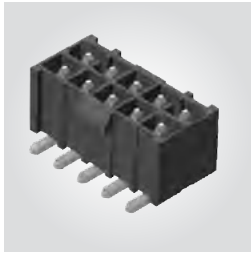


(4.19 mm) .165" PITCH • ISOLATED POWER CONNECTOR SET

IPBT	1	NO. OF POSITIONS PER ROW	LEAD STYLE	PLATING OPTION	ROW OPTION	OPTIONS
		02, 03, 04, 05, 08, 10 15 (-D Only) (Standard Sizes)	-H1 = Through-hole -H2 = Surface Mount	-T = Matte Tin	-S = Single Row -D = Double Row	-RA = Right-angle (Lead Style -H1 only) -GP = Guide Post Holes (Not available with -K) -K = Keyed Polarization (not available with -GP option, is required callout if -GP not called out)

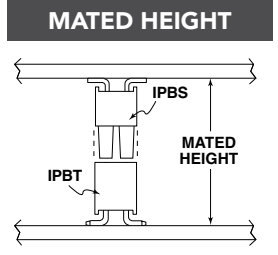
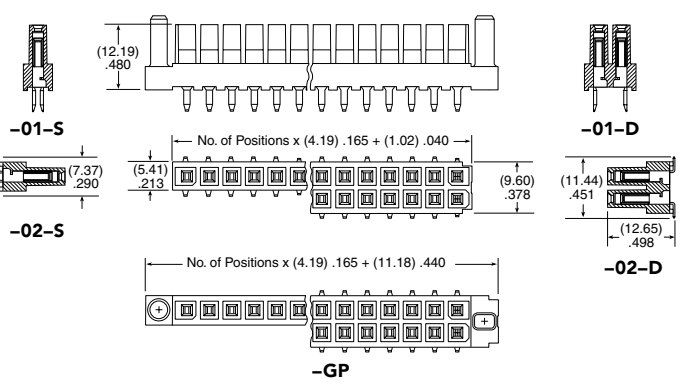
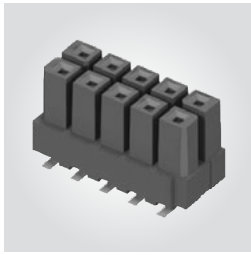
IPBT
Board Mates:
IPBS
Cable Mates:
PMSD, PMSS



IPBT/IPBS	
PINS POWERED	CURRENT RATING (PER CONTACT)
2	10.3 A
4	8.4 A
6	7.6 A
8	7.1 A
30	6.0 A

IPBS	1	NO. OF POSITIONS PER ROW	LEAD STYLE	PLATING OPTION	ROW OPTION	OPTION
		02, 03, 04, 05, 08, 10 15 (-D Only) (Standard Sizes)	-01 = Standard Power -02 = Standard Power Surface Mount	-T = Matte Tin	-S = Single Row -D = Double Row	-GP = Guide Post

IPBS
Board Mates:
IPBT



IPBT/IPBS LEAD STYLE	MATED HEIGHT*
H1/-01	(15.25) .600
-H2/-02	(16.84) .663

Note:
Some lengths, styles and options are non-standard, non-returnable.

View complete specifications at: samtec.com?IPBT & samtec.com?IPBS

Mouser Electronics

Authorized Distributor

Click to View Pricing, Inventory, Delivery & Lifecycle Information:

Samtec:

[IPBT-112-H1-T-D-RA-GP](#) [IPBT-115-H1-T-D-RA-GP](#) [IPBT-104-H2-T-S-K](#) [IPBT-110-H1-T-D-K](#) [IPBT-103-H2-T-D-K](#)
[IPBT-110-H2-T-D-GP](#) [IPBT-103-H2-T-S-K](#) [IPBT-105-H1-T-D-K](#) [IPBT-103-H1-T-D-GP](#) [IPBT-108-H2-T-D-K](#) [IPBT-110-H1-T-D-RA-K](#) [IPBT-105-H1-T-S-K](#) [IPBT-105-H2-T-D-K](#) [IPBT-110-H2-T-D-K](#) [IPBT-115-H1-T-D-RA-K](#) [IPBT-108-H1-T-D-K](#) [IPBT-105-H2-T-D-GP](#) [IPBT-104-H2-T-D-K](#) [IPBT-102-H1-T-D-RA-K](#) [IPBT-103-H1-T-S-RA-GP](#) [IPBT-103-H1-T-D-RA-GP](#) [IPBT-115-H1-T-D-K](#) [IPBT-102-H1-T-D-RA-GP](#) [IPBT-102-H1-T-S-RA-K](#) [IPBT-104-H1-T-S-K](#) [IPBT-105-H1-T-D-GP](#) [IPBT-108-H1-T-S-RA-K](#) [IPBT-105-H1-T-S-RA-K](#) [IPBT-108-H1-T-D-RA-K](#) [IPBT-103-H1-T-S-K](#) [IPBT-110-H1-T-D-RA-GP](#) [IPBT-103-H1-T-S-RA-K](#) [IPBT-103-H1-T-D-RA-K](#) [IPBT-108-H1-T-D-RA-GP](#) [IPBT-105-H1-T-D-RA-K](#) [IPBT-102-H1-T-S-K](#) [IPBT-110-H1-T-D-GP](#) [IPBT-102-H2-T-S-K](#) [IPBT-102-H1-T-D-K](#) [IPBT-103-H1-T-D-K](#) [IPBT-104-H1-T-D-K](#) [IPBT-110-H5-T-D-GP](#) [IPBT-102-H1-T-D-GP](#) [IPBT-104-H1-T-D-RA-GP](#) [IPBT-102-H2-T-D-K](#) [IPBT-104-H1-T-S-RA-K](#) [IPBT-104-H1-T-D-RA-K](#) [IPBT-105-H1-T-D-RA-GP](#) [IPBT-102-H6-T-D-GP](#) [IPBT-102-H2-TM-D-K](#) [IPBT-108-H1-TM-D-RA-K](#) [IPBT-112-H1-T-D-K](#) [IPBT-112-H1-T-D-RA-K](#) [IPBT-102-H2-T-S-GP](#) [IPBT-103-H4-T-D-GP](#) [IPBT-105-H2-TM-D-K](#) [IPBT-107-H1-T-D-GP](#) [IPBT-104-H2-T-D-GP](#) [IPBT-114-H1-T-D-RA-GP](#) [IPBT-114-H1-T-D-GP](#) [IPBT-108-H1-T-D-GP](#) [IPBT-109-H1-T-D-GP](#) [IPBT-115-H1-T-D-GP](#) [IPBT-112-H1-T-D-GP](#) [IPBT-106-H1-T-D-GP](#) [IPBT-115-H2-T-D-GP](#) [IPBT-106-H1-T-D-RA-GP](#) [IPBT-106-H2-T-D-GP](#) [IPBT-109-H2-T-D-GP](#) [IPBT-113-H1-T-D-GP](#) [IPBT-104-H1-TM-D-GP](#) [IPBT-110-H1-TM-D-GP](#) [IPBT-112-H2-TM-D-GP](#) [IPBT-102-H2-T-D-GP](#) [IPBT-104-H1-T-D-GP](#) [IPBT-111-H1-T-D-GP](#) [IPBT-107-H1-T-D-RA-GP](#) [IPBT-107-H2-T-D-GP](#) [IPBT-108-H2-T-D-GP](#) [IPBT-102-H1-TM-D-GP](#) [IPBT-110-H1-TM-D-RA-GP](#) [IPBT-112-H2-T-D-GP](#) [IPBT-113-H1-T-D-RA-GP](#) [IPBT-115-H1-TM-D-GP](#) [IPBT-108-H1-T-S-GP](#) [IPBT-103-H2-TM-D-GP](#) [IPBT-106-H2-TM-D-GP](#) [IPBT-108-H2-TM-D-GP](#) [IPBT-103-H2-T-D-GP](#) [IPBT-109-H1-T-D-RA-GP](#) [IPBT-114-H2-T-D-GP](#) [IPBT-111-H1-T-D-RA-GP](#) [IPBT-111-H2-T-D-GP](#) [IPBT-107-H1-TM-D-GP](#) [IPBT-108-H1-T-S-RA-GP](#) [IPBT-115-H6-T-D-GP](#) [IPBT-106-H1-T-S-RA-GP](#) [IPBT-109-H4-T-D-GP](#) [IPBT-110-H3-T-D-GP](#) [IPBT-104-H1-T-S-RA-GP](#)