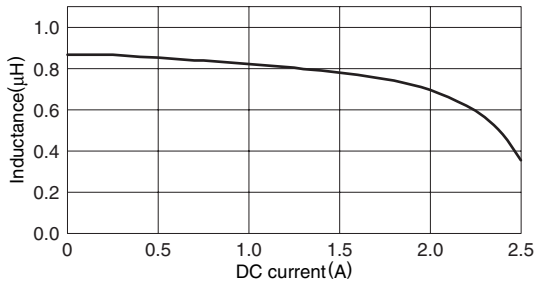
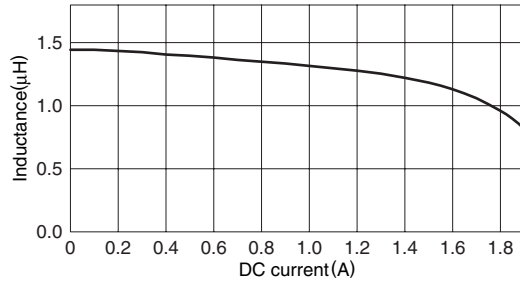


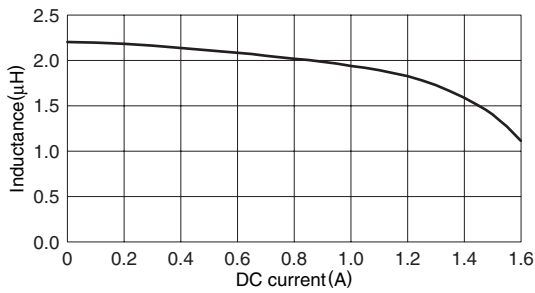
**TYPICAL ELECTRICAL CHARACTERISTICS**  
**INDUCTANCE vs. DC SUPERPOSITION CHARACTERISTICS**  
**VLS252010T-1R0N**



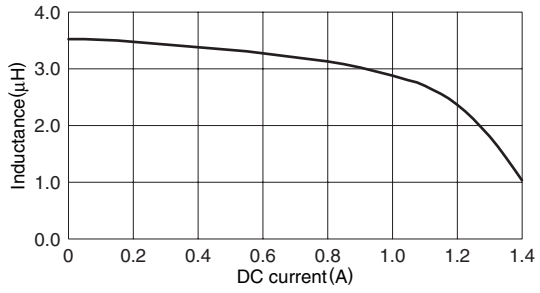
**VLS252010T-1R5N**



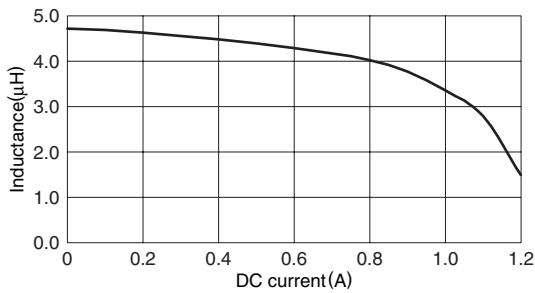
**VLS252010T-2R2M**



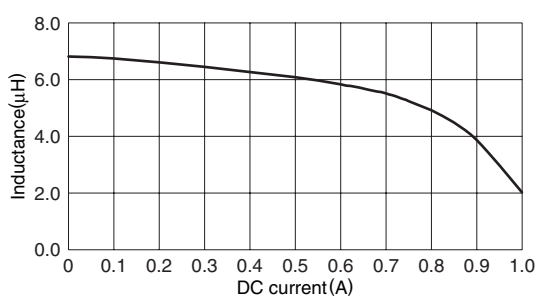
**VLS252010T-3R3M**



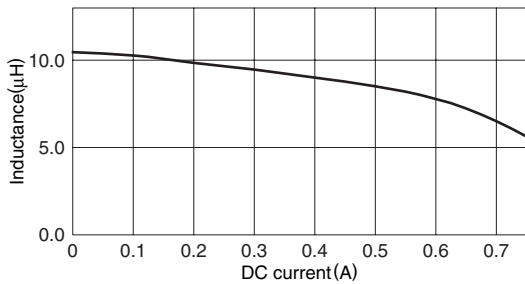
**VLS252010T-4R7M**



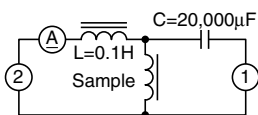
**VLS252010T-6R8M**



**VLS252010T-100M**



**TEST CIRCUIT**



1: LCR meter 4285A  $f=1\text{MHz}$   
 2: DC constant current