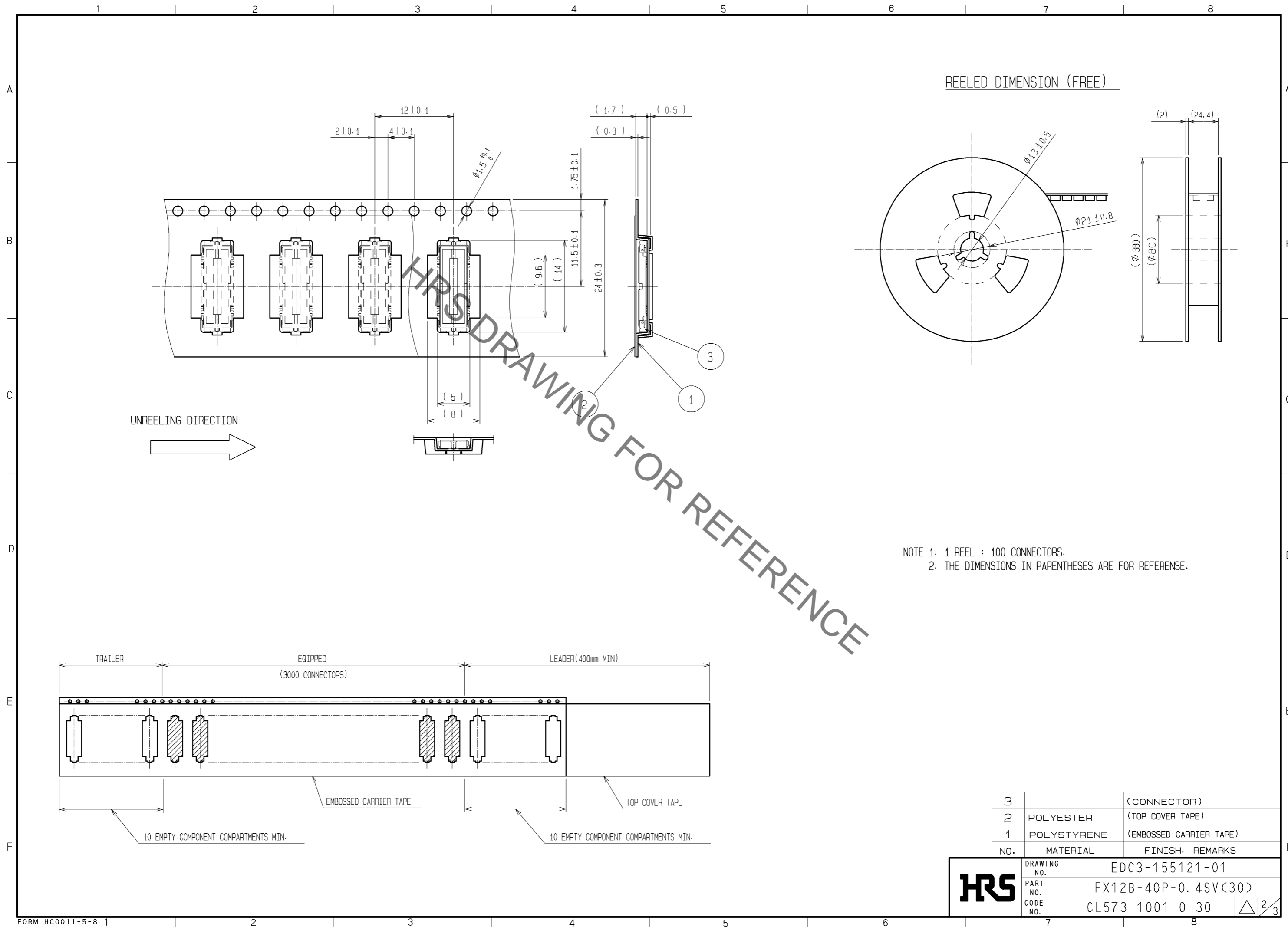


Jun.1.2019 Copyright 2019 HIROSE ELECTRIC CO., LTD. All Rights Reserved.
 In case of consideration for using Automotive equipment / device which demand high reliability, kindly contact our sales window correspondents.



NOTE 1. 1 REEL : 100 CONNECTORS.
 2. THE DIMENSIONS IN PARENTHESES ARE FOR REFERENCE.

3		(CONNECTOR)
2	POLYESTER	(TOP COVER TAPE)
1	POLYSTYRENE	(EMBOSSED CARRIER TAPE)
NO.	MATERIAL	FINISH, REMARKS

HRS	DRAWING NO.	EDC3-155121-01	
	PART NO.	FX12B-40P-0.4SV(30)	
	CODE NO.	CL573-1001-0-30	△ 2/3

Jun.1.2019 Copyright 2019 HIROSE ELECTRIC CO., LTD. All Rights Reserved.
 In case of consideration for using Automotive equipment / device which demand high reliability, kindly contact our sales window correspondents.

NOTES WHEN MATING FX12 SERIES CONNECTORS.

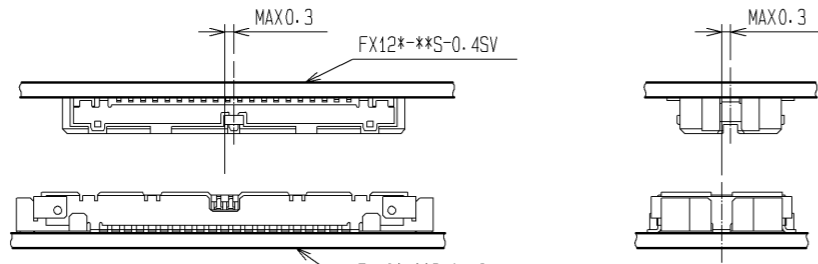


FIGURE-1

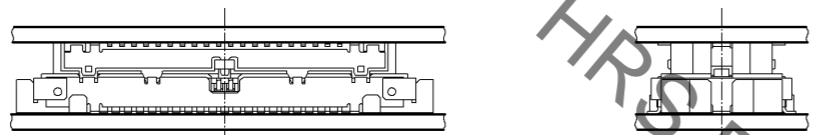


FIGURE-2

THE SELF ALIGNMENT RANGE OF THIS CONNECTOR IS 0.3 mm.
 PLACE THE CONNECTORS AT THE INITIAL MATING POSITION WHERE ITS MISALIGNMENT IS WITHIN 0.3 mm.
 THEN INSERT THE CONNECTOR ON THE CHAMFERED PARTS OF THE MATING-HALF'S OPENING. MAKE SURE TO KEEP THE CONNECTORS PARALLEL TO EACH OTHER.
 NOTE THAT ANGLED INSERTION OR THE PRESSURE APPLIED TO THE CONNECTORS BEFORE ALIGNMENT MAY RESULT IN DAMAGE TO MOLDED HOUSING OR CONTACT DEFORMATION.

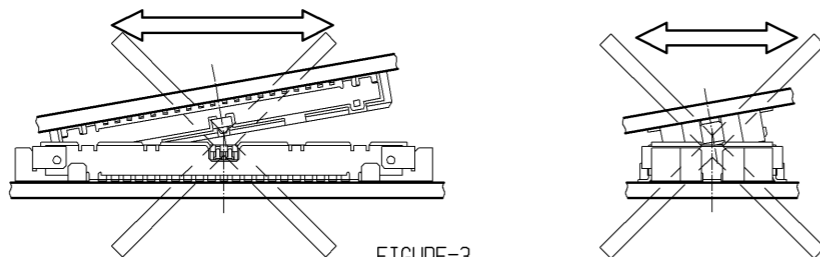


FIGURE-3

PRESS-DOWN EVENLY UNTIL SLIGHT RESISTANCE IS FELT.
 OVERCOMING THIS SLIGHT RESISTANCE WILL COMPLETE THE MATING OF RECEPTACLE WITH HEADER.
 A DEFINITE 'CLICK' SENSATION WILL CONFIRM THE FULLY MATED CONDITION.

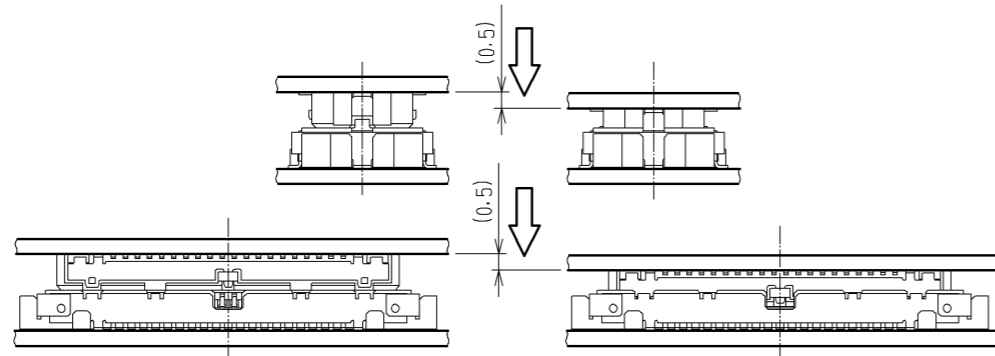


FIGURE-4

THE MATED CONDITIONS CAN BE RELEASED BY A DROP IMPACT OR THE APPLIED FORCE CAUSED BY FPC-HANDLING.
 FIX THE CONNECTORS BY APPLYING PRESSURE IN THE MATING DIRECTION WITH THE DEVICE OR A BUFFER MATERIAL.

NOTES WHEN EXTRACTING

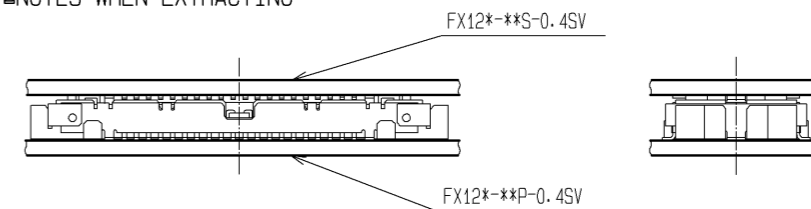


FIGURE-5

LEFT EVEN ONE SIDE, KEEPING BOTH BOARDS PARALLEL TO EACH OTHER.

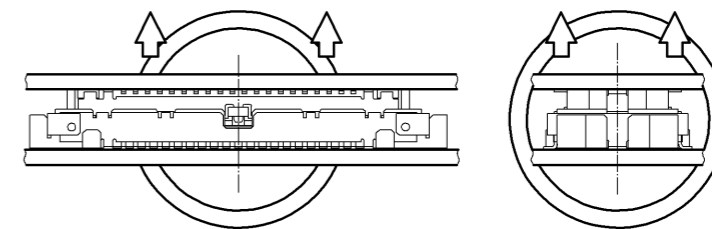


FIGURE-6

WHEN HANDLING CIRCUMSTANCES PREVENT THE CONNECTOR FROM BEING KEPT LEVEL DURING UN-MATING, ONE END MAY BE LIFTED SEPARATE AS SHOWN ON FIGURE-7.
 HOWEVER, TO UTILIZE THIS PROCEDURE THE CONNECTOR MUST BE MOUNTED ON A SUFFICIENTLY RIGID CIRCUIT BOARD.
 ANY DEFLECTION OF THE BOARD DURING THIS OPERATION MAY RESULT IN DAMAGE TO THE CONNECTOR OR SOLDER JOINTS.
 DO NOT ATTEMPT THE START OF THE UN-MATING OF THE CONNECTORS FROM ONE SIDE(FIGURE-8)

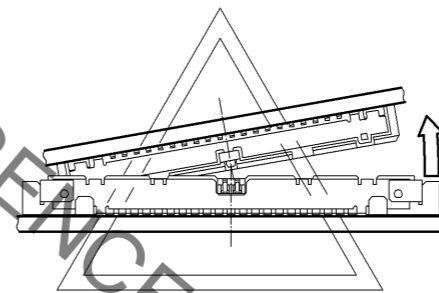


FIGURE-7

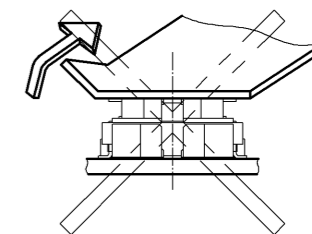


FIGURE-8

WHEN REMOVAL IS FROM THE WIDTH ORIENTATION AS ILLUSTRATED IN THE DIAGRAM TO THE LEFT, DAMAGE COULD BE CAUSED TO THE CONNECTOR. DO NOT PERFORM REMOVAL FROM THE WIDTH ORIENTATION.

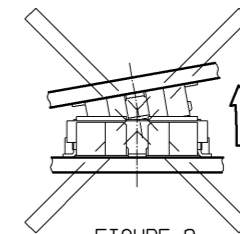


FIGURE-9

HRS	DRAWING NO.	EDC3-155121-01
	PART NO.	FX12B-40P-0.4SV(30)
	CODE NO.	CL573-1001-0-30
		△ 3/3

Mouser Electronics

Authorized Distributor

Click to View Pricing, Inventory, Delivery & Lifecycle Information:

[Hirose Electric:](#)

[FX12B-40P-0.4SV\(30\)](#)