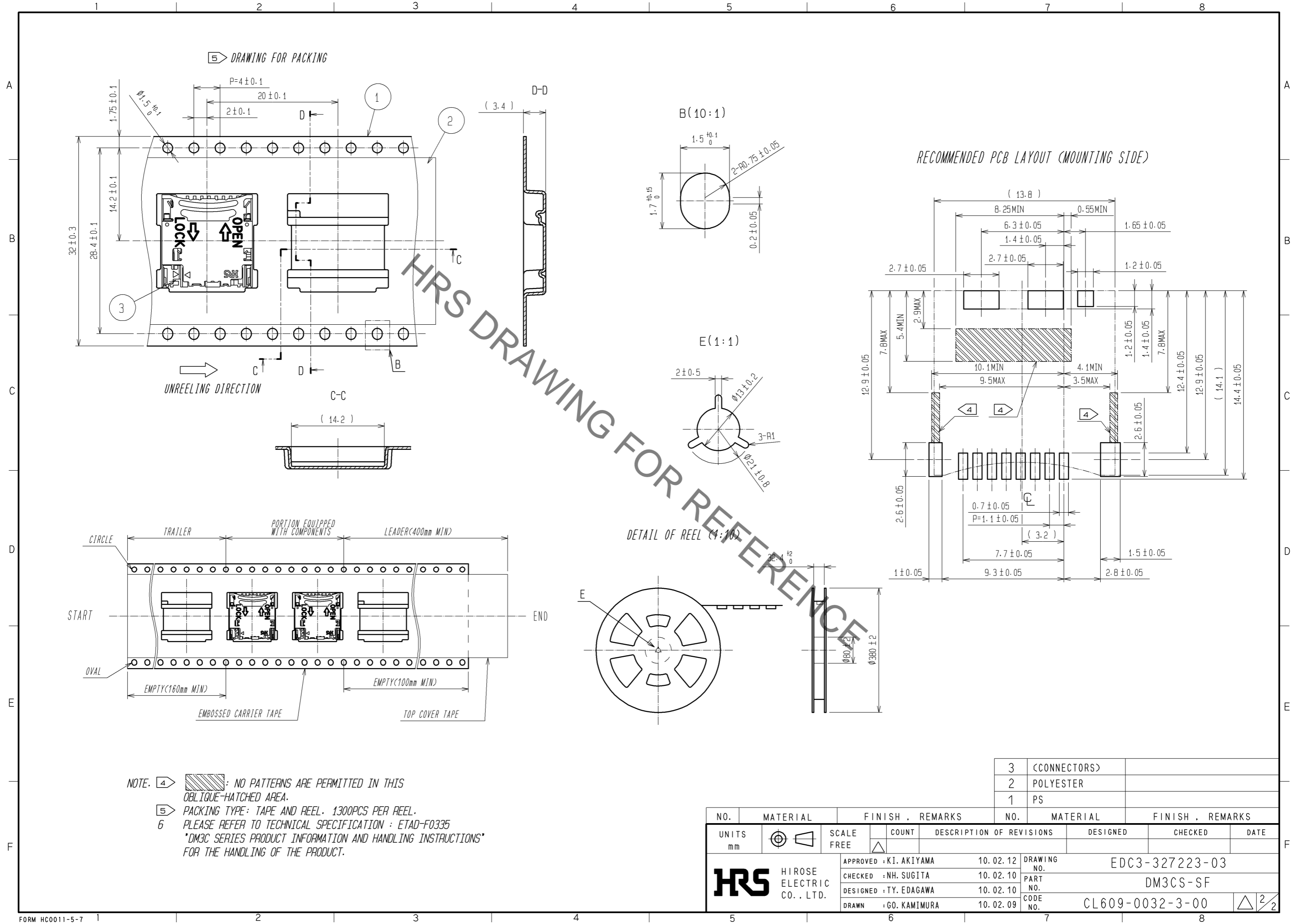


Aug.1.2021 Copyright 2021 HIROSE ELECTRIC CO., LTD. All Rights Reserved.
 In case of consideration for using Automotive equipment / device which demand high reliability, kindly contact our sales window correspondents.



NOTE. 4 : NO PATTERNS ARE PERMITTED IN THIS OBLIQUE-HATCHED AREA.
 5 PACKING TYPE: TAPE AND REEL. 1300PCS PER REEL.
 6 PLEASE REFER TO TECHNICAL SPECIFICATION : ETAD-F0335 "DM3C SERIES PRODUCT INFORMATION AND HANDLING INSTRUCTIONS" FOR THE HANDLING OF THE PRODUCT.

NO.	MATERIAL	FINISH . REMARKS	NO.	MATERIAL	FINISH . REMARKS
3	(CONNECTORS)		3	(CONNECTORS)	
2	POLYESTER		2	POLYESTER	
1	PS		1	PS	

UNITS mm		SCALE FREE	COUNT △	DESCRIPTION OF REVISIONS	DESIGNED	CHECKED	DATE
APPROVED : KI. AKIYAMA 10.02.12				DRAWING NO.	EDC3-327223-03		
CHECKED : NH. SUGITA 10.02.10				PART NO.	DM3CS-SF		
DESIGNED : TY. EDAGAWA 10.02.10				CODE NO.	CL609-0032-3-00		
DRAWN : GO. KAMIMURA 10.02.09					△ 2/2		

Mouser Electronics

Authorized Distributor

Click to View Pricing, Inventory, Delivery & Lifecycle Information:

[Hirose Electric:](#)

[DM3CS-SF](#)