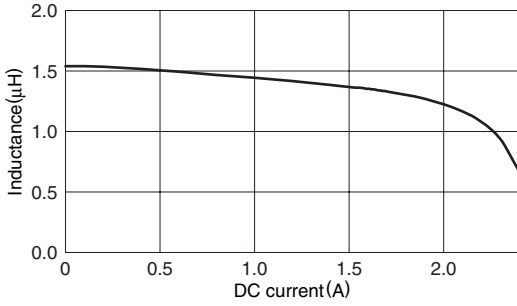
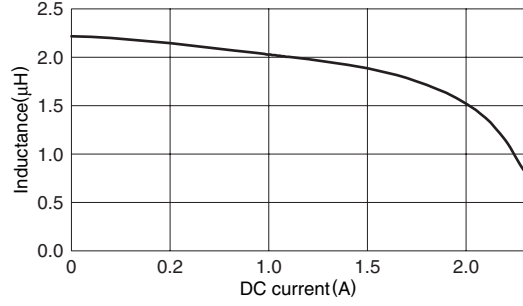


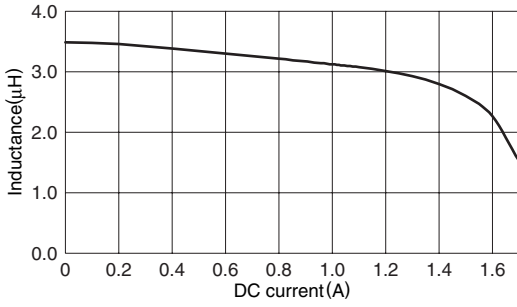
**TYPICAL ELECTRICAL CHARACTERISTICS**  
**INDUCTANCE vs. DC SUPERPOSITION CHARACTERISTICS**  
**VLS252012T-1R5N1R4**



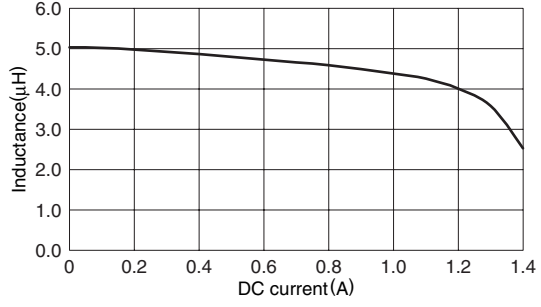
**VLS252012T-2R2M1R3**



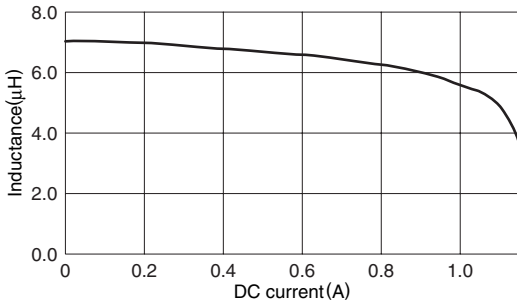
**VLS252012T-3R3MR99**



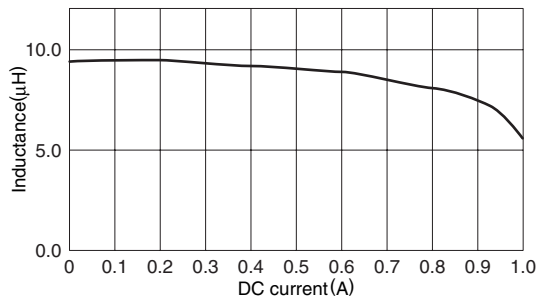
**VLS252012T-4R7MR81**



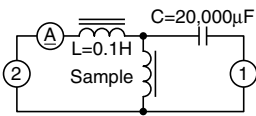
**VLS252012T-6R8MR66**



**VLS252012T-100MR59**



**TEST CIRCUIT**



- 1: LCR meter 4285A f=1MHz
- 2: DC constant current