

(0.80 mm) .0315" PITCH • VERTICAL EDGE CARD SOCKET

HSEC8	- 1	POSITIONS PER ROW	CARD THICKNESS	PLATING OPTION	DV	A	OTHER OPTIONS
--------------	------------	--------------------------	-----------------------	-----------------------	-----------	----------	----------------------

09, 10, 13, 20, 25, 30, 37, 40, 49, 50, 60, 70, 80, 100
(13, 25, 49 only available with -L or -L2 option; 09 only available with -L2 option; 37 only available with -L option)

-01
= (1.60 mm) .062" thick card

-03
= (2.36 mm) .093" thick card

-L
= 10 μ" (0.25 μm) Gold on contact area, Matte Tin on tail

-S
= 30 μ" (0.76 μm) Gold on contact area, Matte Tin on tail

-K
= Polyimide Pick & Place Pad

-BL
= Board Locks; -01 card only (Weld tab standard)

-L
= Latching Option; -01 card only (13, 25, 37, 49 only) (Weld tab standard)

-L2
= ECDP Latching; -01 card only (09, 13, 25, 49 only) (For use with ECDP) (Weld tab standard)

-WT
= Weld tab

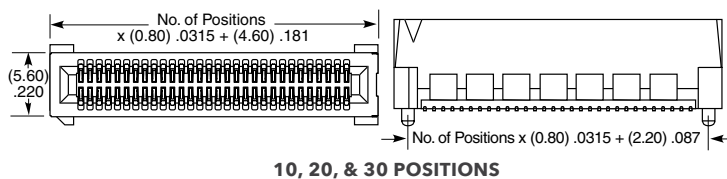
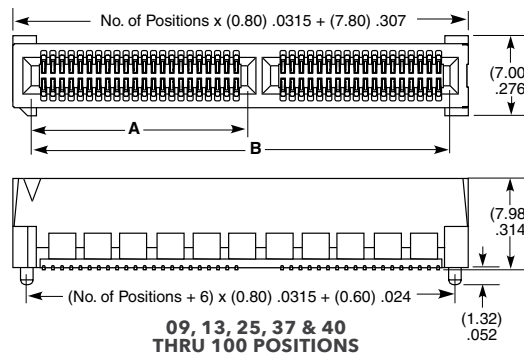
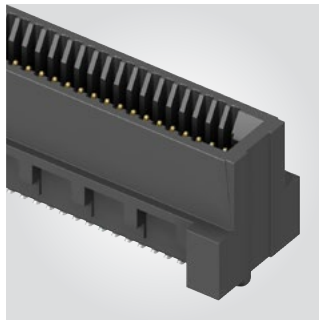
-TR
= Tape & Reel (09 - 70 only)

-FR
= Full Reel Tape & Reel (must order max. quantities per reel; contact Samtec for quantity breaks) (09-70 only)

HSEC8-DV

Card Mates:
(1.60 mm) .062" card (HSC8)
(2.36 mm) .093" card (HSC8)

Cable Mates:
ECDP



OTHER SOLUTIONS

For complete edge card system with cards and sockets, visit samtec.com?RU8.

For a card to mate with an HSEC8 socket, visit samtec.com?HSC8



POSITIONS PER ROW	A	B	CABLE	CONNECTOR
09*†	(4.50) .177	(11.80) .465	ECDP-04	HSEC8-109-L2
13*†	(6.10) .240	(15.00) .591	ECDP-08	HSEC8-113-L2
25*†	(6.10) .240	(24.60) .969	ECDP-16	HSEC8-125-L2
37†	(18.10) .713	(34.20) 1.346	ECDP-32	HSEC8-149-L2
40	(18.90) .744	(36.60) 1.441		
49*†	(22.90) .902	(43.80) 1.724		
50	(22.90) .902	(44.60) 1.756		
60	(26.90) 1.059	(52.60) 2.071		
70†	(26.90) 1.059	(60.60) 2.386		
80†	(26.90) 1.059	(68.60) 2.701		
100†	(26.90) 1.059	(84.60) 3.331		

Positions where no dimensions are given do not have keying feature.

* Mates with ECDP Series
† Available with -01 Card Only

Note:
Some sizes, styles and options are non-standard, non-returnable.

View complete specifications at: samtec.com?HSEC8-DV

Mouser Electronics

Authorized Distributor

Click to View Pricing, Inventory, Delivery & Lifecycle Information:

Samtec:

[HSEC8-125-01-S-DV-A-BL](#) [HSEC8-150-01-L-DV-A](#) [HSEC8-120-01-L-DV-A-K-TR](#) [HSEC8-150-01-S-DV-A](#) [HSEC8-160-01-L-D-EM2](#) [HSEC8-113-01-S-DV-A-PE](#) [HSEC8-180-01-S-DV-A](#) [HSEC8-110-01-L-RA-TR](#) [HSEC8-1100-01-L-DV-A-BL](#) [HSEC8-113-01-L-RA-L2](#) [HSEC8-150-01-S-D-EM2](#) [HSEC8-110-01-SM-DV-A](#) [HSEC8-160-01-S-RA-TR](#) [HSEC8-110-01-S-DV-A-PE](#) [HSEC8-150-01-L-DV-A-K-TR](#) [HSEC8-110-01-L-DV-A](#) [HSEC8-110-01-L-DV-A-K-TR](#) [HSEC8-110-01-S-DV-A](#) [HSEC8-130-01-L-D-EM2](#) [HSEC8-150-01-L-D-EM2](#) [HSEC8-120-01-S-DV-A-K](#) [HSEC8-120-03-S-DV-A-K-TR](#) [HSEC8-130-01-S-DV-A-K-TR](#) [HSEC8-120-01-L-DV-A-K](#) [HSEC8-109-01-L-DV-A-L2](#) [HSEC8-170-01-S-DV-A-K](#) [HSEC8-140-01-S-DV-A-BL](#) [HSEC8-110-01-S-DV-A-K-TR](#) [HSEC8-130-01-S-RA](#) [HSEC8-120-01-S-DV-A](#) [HSEC8-130-01-SM-DV-A](#) [HSEC8-130-01-L-DV-A-K-TR](#) [HSEC8-110-01-L-RA](#) [HSEC8-120-01-L-DV-A](#) [HSEC8-160-01-S-RA](#) [HSEC8-140-01-L-D-EM2](#) [HSEC8-130-01-L-DV-A-K](#) [HSEC8-120-01-S-RA](#) [HSEC8-130-01-L-RA](#) [HSEC8-130-01-S-DV-A-K](#) [HSEC8-140-01-SM-DV-A](#) [HSEC8-160-01-L-DV-A-K-TR](#) [HSEC8-1100-01-S-DV-A](#) [HSEC8-140-01-L-RA-TR](#) [HSEC8-125-01-L-RA-L2](#) [HSEC8-180-01-S-DV-A-K](#) [HSEC8-160-01-L-DV-A](#) [HSEC8-160-01-L-RA-TR](#) [HSEC8-160-01-S-DV-A-K-TR](#) [HSEC8-130-01-S-DV-A-WT-K-TR](#) [HSEC8-120-01-SM-DV-A](#) [HSEC8-130-01-L-DV-A](#) [HSEC8-110-01-S-D-EM2](#) [HSEC8-150-01-L-RA-TR](#) [HSEC8-140-01-S-DV-A](#) [HSEC8-180-01-L-DV-A-K](#) [HSEC8-160-01-L-DV-A-BL](#) [HSEC8-160-01-S-DV-A-BL](#) [HSEC8-113-01-L-DV-A-K-TR](#) [HSEC8-120-01-L-RA](#) [HSEC8-170-01-S-DV-A-K-TR](#) [HSEC8-125-01-S-DV-A](#) [HSEC8-125-01-L-DV-A-L2](#) [HSEC8-109-01-L-RA-L2](#) [HSEC8-125-01-L-DV-A](#) [HSEC8-160-01-L-RA-BL](#) [HSEC8-140-01-L-RA](#) [HSEC8-110-01-S-RA](#) [HSEC8-140-01-S-DV-A-K-TR](#) [HSEC8-160-01-S-DV-A-K](#) [HSEC8-113-01-S-DV-A](#) [HSEC8-140-01-L-DV-A-K-TR](#) [HSEC8-140-01-L-DV-A-BL](#) [HSEC8-130-01-S-D-EM2](#) [HSEC8-125-01-S-DV-A-K-TR](#) [HSEC8-120-01-S-DV-A-K-TR](#) [HSEC8-150-01-L-DV-A-K](#) [HSEC8-1100-01-L-DV-A-K](#) [HSEC8-150-01-S-DV-A-K-TR](#) [HSEC8-120-01-S-DV-K-TR](#) [HSEC8-140-01-S-D-EM2](#) [HSEC8-120-01-L-DV-A-TR](#) [HSEC8-140-01-S-RA](#) [HSEC8-113-01-S-DV-A-K-TR](#) [HSEC8-120-01-S-D-EM2](#) [HSEC8-150-01-S-RA-TR](#) [HSEC8-150-01-L-DV-A-BL](#) [HSEC8-110-01-SM-DV-A-PE-K-TR](#) [HSEC8-113-01-L-RA-BL](#) [HSEC8-113-01-SM-DV-A-L2-K-TR](#) [HSEC8-125-01-SM-DV-A-WT-K](#) [HSEC8-130-01-L-PV-4-2](#) [HSEC8-130-01-S-PV-2-1-WT](#) [HSEC8-130-01-S-PV-4-2](#) [HSEC8-137-01-H-DV-A-WT](#) [HSEC8-140-01-H-DV-A-WT](#) [HSEC8-140-01-SM-DV-A-WT](#) [HSEC8-160-01-SM-DV-A-WT](#) [HSEC8-170-03-L-DV-A-K](#) [HSEC8-190-03-L-DV-A-K](#)