

RATINGS AND CHARACTERISTIC CURVES (SFA1601G THRU SFA1608G)

FIG.1- MAXIMUM FORWARD CURRENT DERATING CURVE

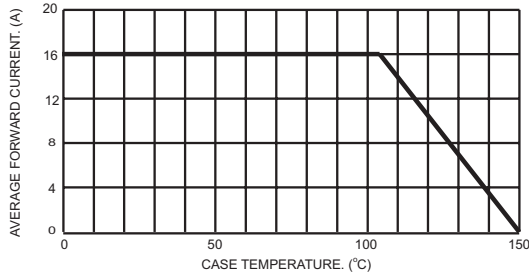


FIG.2- TYPICAL REVERSE CHARACTERISTICS

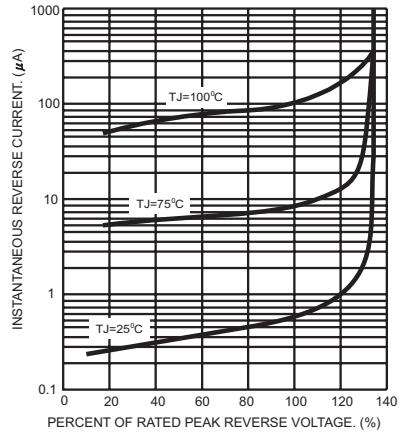


FIG.3- MAXIMUM NON-REPETITIVE FORWARD SURGE CURRENT

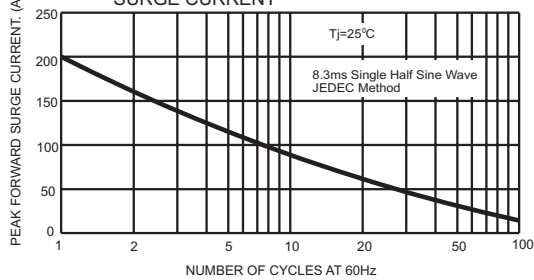


FIG.5- TYPICAL FORWARD CHARACTERISTICS

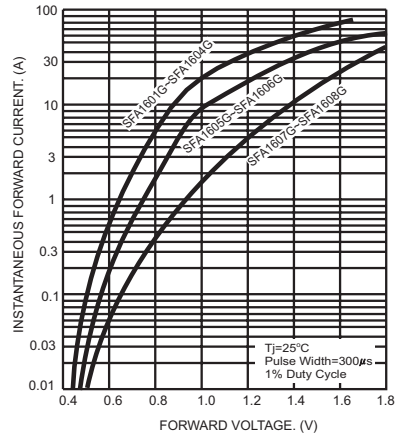


FIG.4- TYPICAL JUNCTION CAPACITANCE

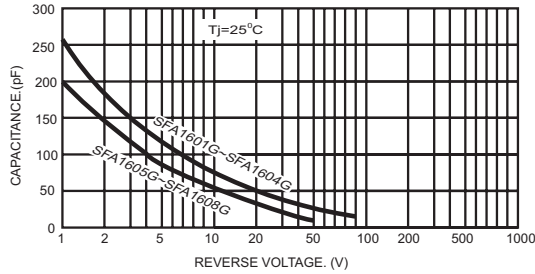
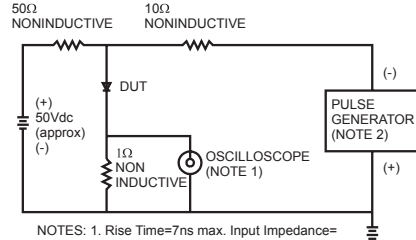
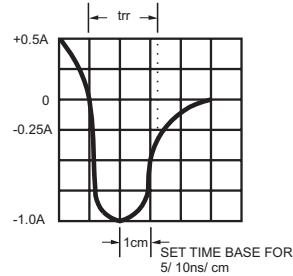


FIG.6- REVERSE RECOVERY TIME CHARACTERISTIC AND TEST CIRCUIT DIAGRAM



- NOTES: 1. Rise Time=7ns max. Input Impedance= 1 megohm 22pf
2. Rise Time=10ns max. Source Impedance= 50 ohms



Mouser Electronics

Authorized Distributor

Click to View Pricing, Inventory, Delivery & Lifecycle Information:

Taiwan Semiconductor:

[SFA1604G](#) [SFA1608G](#) [SFA1606G](#) [SFA1602G](#) [SFA1601G](#) [SFA1603G](#) [SFA1605G](#) [SFA1607G](#) [SFAF1601G](#)
[SFAF1602G](#) [SFAF1603G](#) [SFAF1604G](#) [SFAF1605G](#) [SFAF1606G](#) [SFAF1607G](#) [SFAF1608G](#) [SFAF1601G C0](#)
[SFAF1608G C0](#) [SFAF1607G C0](#) [SFAF1603G C0](#) [SFAF1604G C0](#) [SFAF1606G C0](#) [SFAF1605G C0](#) [SFAF1602G C0](#)