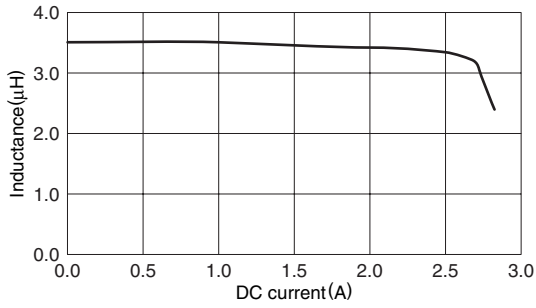
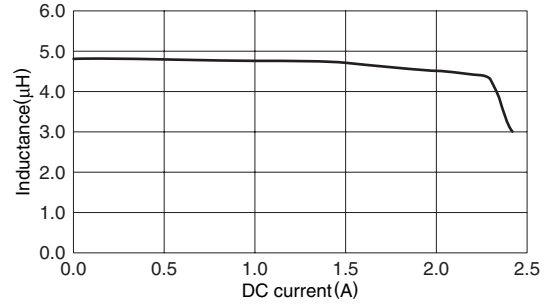


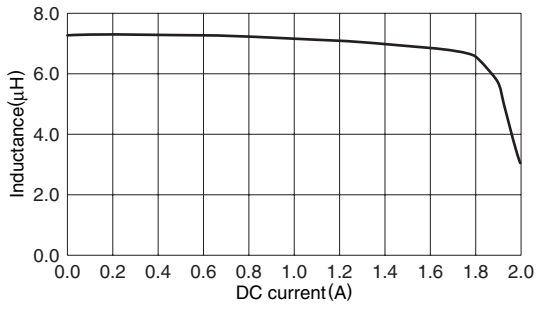
TYPICAL ELECTRICAL CHARACTERISTICS
INDUCTANCE vs. DC SUPERPOSITION CHARACTERISTICS
VLF5014ST-3R3M2R0



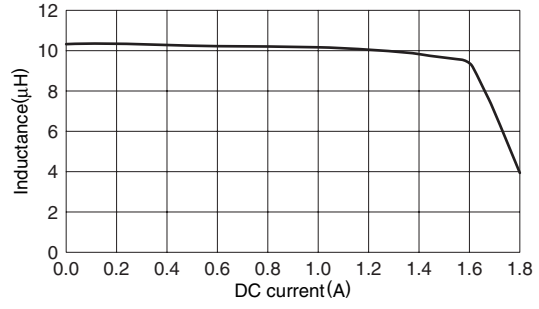
VLF5014ST-4R7M1R7



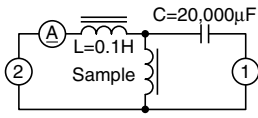
VLF5014ST-6R8M1R4



VLF5014ST-100M1R2



TEST CIRCUIT



1: LCR meter 4285A f=1MHz
2: DC constant current