

Input Specifications

Input voltage range	- AC nominal rated	110 – 240 VAC, 50-60 Hz
	- AC range (designed for)	85 – 264 VAC, 47-63 Hz
	- DC nominal rated	130 – 300 VDC
	- DC range (designed for)	90 – 375 VDC
Output derating	- at operation <100 VAC	-2.5% /V
	- at operation <130 VDC	-1.0% /VDC
Standby power consumption	TPC 030 and 055 models:	< 0.3 W
	TPC 080 and 120 models:	< 0.5 W
Harmonic limits		EN 61000-3-2, Class A
Recommended circuit breaker, characteristic C		6.0 – 16.0 A

Output Specifications

Output voltage adjustable range (potentiometer on frontpanel)	5 VDC model:	5.0 – 6.0 VDC
	12 VDC models:	12 – 15 VDC
	24 VDC models:	24 – 28.8 VDC
	48 VDC models:	48 – 56 VDC
Regulation	- Input variation	0.5 % max.
	- Load variation (0-100 %)	5 VDC models: 0.75 % max. other models: 0.5 % max.
Ripple and noise (20MHz bandwidth)		100 mVpk-pk max.
Short circuit protection		<200 % of lout nom.
Overvoltage protection (% of max. adjustable voltage)	5 VDC model:	<180 %
	12 VDC models:	<170 %
	24 VDC models:	<160 %
	48 VDC models:	<107 %
Power back immunity		125 % of nominal Vout
Start-up time		2 sec. max.
Hold-up time (115 VAC / 230 VAC)		min. 15 ms / min. 40 ms
Power OK signal	- trigger	80 – 95 %
	- PNP open collector max. current	48 VDC models: 5 mA other models: 10 mA

General Specifications

Temperature ranges	- Operating	-25°C to +70°C max.
	- Storage (non operating)	-25°C to +85°C
Temperature derating		2.5 %/K above 50°C
Humidity (non condensing)		95 % rel. H max.
Temperature coefficient		0.02 %/K
Remote On/Off		10 mA current source
Efficiency (average at power consumption 25-100%)	TPC 030-105:	79 %
	other 30 Watt models:	84 %
	other models:	87 %
Reliability, calculated MTBF at +25°C (according to IEC-1709)	TPC 030 models:	>2.2 Mio h
	TPC 055 models:	>1.7 Mio h
	TPC 080 models:	>1.5 Mio h
	TPC 120 models:	>1.3 Mio h
Isolation voltage (60 s)	- Input / Output	3000 VAC
Altitude during operation		2'000 m max.

General Specifications

Safety standards	<ul style="list-style-type: none"> - CB test certificate - SIQ type approved - CSA certificate of compliance - UL certificate of compliance - SIQ type approved - Certification documents 	<p>IEC 60950-1:2005 2nd Ed, Am 1:2009 IEC/EN 61010-1, IEC 61010-2-201 EN 60950-1 :2006 + Am 1 :2010 + Am 11 :2009 + Am 12:2011 IEC/EN 61010-1, IEC/EN 61010-2-201 UL 60950-1-2nd Ed CSA 60950-1-07-2nd Ed UL 508, CSA C22.2 No.107:1-01 EN 60204-1:2006 + A1:2009, EN 61558-2-8:2010, EN 61558-2-16:2009, EN 50178:1997</p> <p>www.tracopower.com/overview/tpc</p>
Environmental compliance	<ul style="list-style-type: none"> - Reach declaration document - RoHS 	<p>www.tracopower.com/info/reach-declaration.pdf RoHS directive 2011/65/EU</p>
EMC	<ul style="list-style-type: none"> - emissions - immunity 	<p>IEC 61000-6-3 (residential environment) IEC 61000-6-2 (industrial environment) SEMI F47</p>
Class of protection		class I (earth connection needed)
Case protection		IP 20 (IEC 60529)
Enclosure material		Makrolon 2405 (UL 94V-0 rated)
Mounting		DIN-rails as per EN 50022-35x15/7.5 (snap-on with self-locking spring) wall mounting bracket optional (not included)

Supporting documents: www.tracopower.com/overview/tpc

TPC-REM240-24 Redundancy Module

Order Code	Nominal Input Voltage	Max Power per Input	Output Voltage adjustable	Output Current max.
TPC-REM240-24	24 VDC	120 W	24 – 27 VDC	10 A
TPC-REM240-48	48 VDC		48 – 55 VDC	5 A

These modules are external units for operation with two TPC power supplies with output voltage of 24 VDC or 48 VDC and of same type and power. The modules allow to connect two outputs of TPC power supplies together in order to achieve a reliable DC supply. In normal operation the module achieves equal current share for both power supplies connected. During the redundancy operation, if one of the power supplies fails, the output power will be provided in full by the remaining operating power supply. The redundancy of the DC system is monitored by a DC-OK signal.



Specifications

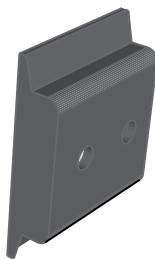
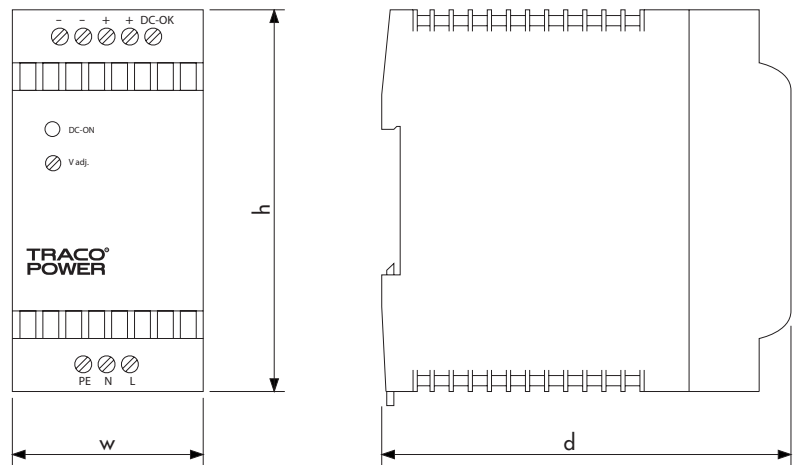
Operating temperature		-25°C to +70°C max. (with derating)
Electromagnetic compatibility		in correspondence to connected units (no internal switching device)
Dimensions		same as model TPC 055 (see page 4)
Connection		screw terminal block
Installation instructions	- installation document	www.tracopower.com/overview/tpc

All specifications valid at nominal input voltage, full load and +25°C after warm-up time unless otherwise stated.

Case Dimensions

Model	Width (W)	Height	Depth d	Weight
TPC 030	26.5 (1.04)	90 (3.54)	96.5 (3.80)	160 g
TPC 055	45.0 (1.77)	90 (3.54)	96.5 (3.80)	260 g
TPC-REM 240-24	45.0 (1.77)	90 (3.54)	96.5 (3.80)	160 g
TPC 080	63.0 (2.48)	90 (3.54)	96.5 (3.80)	360 g
TPC 120	72.0 (2.83)	90 (3.54)	110.0 (4.33)	440 g

Dimensions in [mm], () = Inch
Tolerances: ±0.5 mm (±0.02)



Snap-on bracket for wall mounting (black plastic)

Wall Mounting Bracket (accessories not included)		
Order Code	For Models	Dimensions
TPC-WMK1	TPC 030-xx	26.0 x 35 x 7.5
TPC-WMK2	TPC 055-xx, TPC-REM 240-24	42.7 x 35 x 7.5
TPC-WMK3	TPC 080-xx	60.7 x 35 x 7.5
TPC-WMK4	TPC 120-xx	69.7 x 35 x 7.5

Mouser Electronics

Authorized Distributor

Click to View Pricing, Inventory, Delivery & Lifecycle Information:

[TRACO Power:](#)

[TPC-REM240-24](#) [TPC-REM240-48](#)