

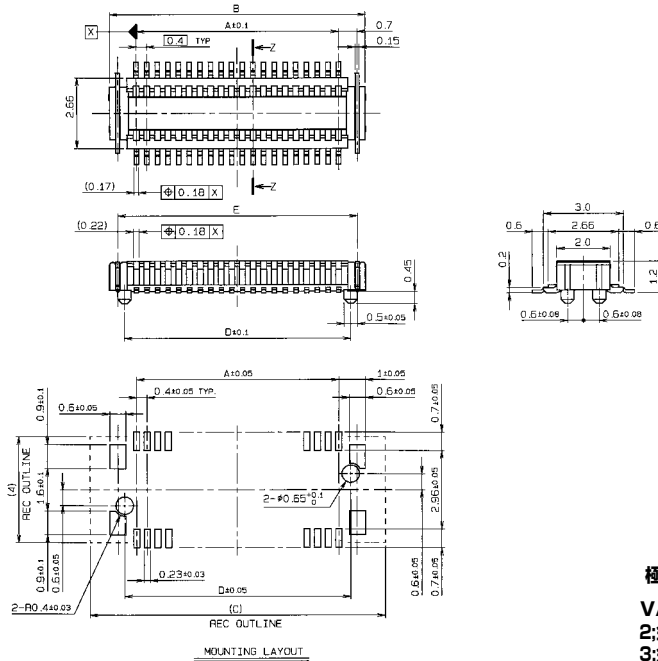
0.4mm Pitch

SERIES

5602

0.4mmピッチ BtoB SMT H=1.5mm 金具付きタイプ コネクタ
0.4mmPitch BtoB SMT H=1.5mm with ANCHOR PLATE Type

● PLUG



| No. of POS. | A | B | C | D | E |
|-------------|------|------|------|------|------|
| 20 | 3.6 | 5.6 | 7.1 | 4.5 | 5.0 |
| 24 | 4.4 | 6.4 | 7.9 | 5.3 | 5.8 |
| 30 | 5.6 | 7.6 | 9.1 | 6.5 | 7.0 |
| 34 | 6.4 | 8.4 | 9.9 | 7.3 | 7.8 |
| 40 | 7.6 | 9.6 | 11.1 | 8.5 | 9.0 |
| 50 | 9.6 | 11.6 | 13.1 | 10.5 | 11.0 |
| 60 | 11.6 | 13.6 | 15.1 | 12.5 | 13.0 |
| 70 | 13.6 | 15.6 | 17.1 | 14.5 | 15.0 |
| 80 | 15.6 | 17.6 | 19.1 | 16.5 | 17.0 |

注文コード/Ordering Code

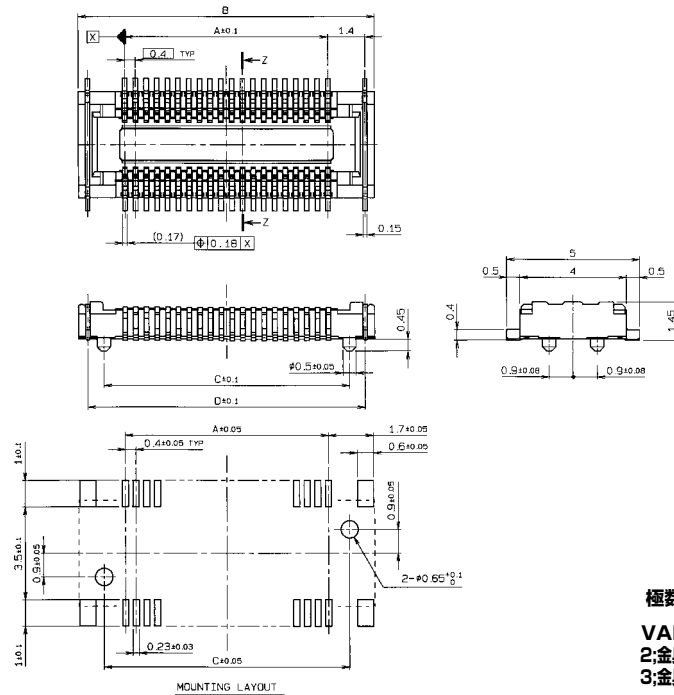
Part No. 14 5602 xxx 00x 829

極数 NUMBER OF CONTACTS

VARIATION CODE

- 2: 金具有りボス無し WITH ANCHOR PLATE AND WITHOUT BOSS
- 3: 金具有りボス有り WITH ANCHOR PLATE AND BOSS

● RECEPTACLE



| No. of POS. | A | B | C | D |
|-------------|------|------|------|------|
| 20 | 3.6 | 7.1 | 5.2 | 6.4 |
| 24 | 4.4 | 7.9 | 6.0 | 7.2 |
| 30 | 5.6 | 9.1 | 7.2 | 8.4 |
| 34 | 6.4 | 9.9 | 8.0 | 9.2 |
| 40 | 7.6 | 11.1 | 9.2 | 10.4 |
| 50 | 9.6 | 13.1 | 11.2 | 12.4 |
| 60 | 11.6 | 15.1 | 13.2 | 14.4 |
| 70 | 13.6 | 17.1 | 15.2 | 16.4 |
| 80 | 15.6 | 19.1 | 17.2 | 18.4 |

注文コード/Ordering Code

Part No. 24 5602 xxx 00x 829

極数 NUMBER OF CONTACTS

VARIATION CODE

- 2: 金具有りボス無し WITH ANCHOR PLATE AND WITHOUT BOSS
- 3: 金具有りボス有り WITH ANCHOR PLATE AND BOSS

0.4mm Pitch

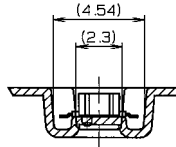
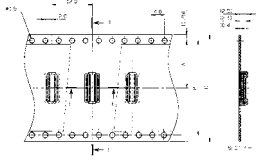
SERIES

5602

0.4mmピッチ BtoB SMT H=1.5mm コネクタ エンボス梱包
0.4mmPitch BtoB SMT H=1.5mm Tape and Reel Package

● PLUG

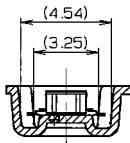
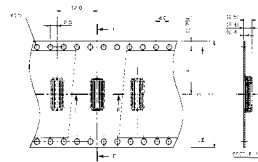
金具無し WITHOUT ANCHOR PLATE



SECT. E-E (S=5/1)

| 寸法表 DIMENSION | | | | |
|----------------------|------|------|----|------|
| 極数 NO. OF POS. | A | B | C | D |
| 20 | 11.5 | - | 24 | 30.4 |
| 24 | 11.5 | - | 24 | 30.4 |
| 30 | 11.5 | - | 24 | 30.4 |
| 34 | 11.5 | - | 24 | 30.4 |
| 40 | 11.5 | - | 24 | 30.4 |
| 50 | 14.2 | 28.4 | 32 | 38.4 |
| 60 | 14.2 | 28.4 | 32 | 38.4 |
| 70 | 14.2 | 28.4 | 32 | 38.4 |
| 80 | 14.2 | 28.4 | 32 | 38.4 |

金具有り WITH ANCHOR PLATE



SECT. E-E (S=5/1)

| 寸法表 DIMENSION | | | | |
|----------------------|------|------|----|------|
| 極数 NO. OF POS. | A | B | C | D |
| 20 | 11.5 | - | 24 | 30.4 |
| 24 | 11.5 | - | 24 | 30.4 |
| 30 | 11.5 | - | 24 | 30.4 |
| 34 | 11.5 | - | 24 | 30.4 |
| 40 | 11.5 | - | 24 | 30.4 |
| 50 | 14.2 | 28.4 | 32 | 38.4 |
| 60 | 14.2 | 28.4 | 32 | 38.4 |
| 70 | 14.2 | 28.4 | 32 | 38.4 |
| 80 | 14.2 | 28.4 | 32 | 38.4 |

注文コード/Ordering Code

Part No. 14 5602 xxx 00x 829

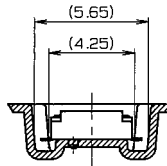
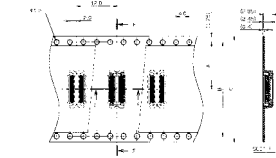
極数 NUMBER OF CONTACTS

VARIATION CODE

- 0:金具無しボス無し WITHOUT ANCHOR PLATE AND WITHOUT BOSS
- 1:金具無しボス有り WITHOUT ANCHOR PLATE AND BOSS
- 2:金具有りボス無し WITH ANCHOR PLATE AND WITHOUT BOSS
- 3:金具有りボス有り WITH ANCHOR PLATE AND BOSS

● RECEPTACLE

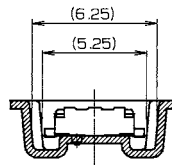
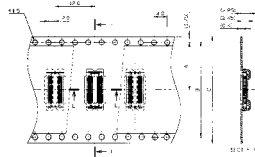
金具無し WITHOUT ANCHOR PLATE



SECT. E-E (S=5/1)

| 寸法表 DIMENSION | | | | |
|----------------------|------|------|----|------|
| 極数 NO. OF POS. | A | B | C | D |
| 20 | 11.5 | - | 24 | 30.4 |
| 24 | 11.5 | - | 24 | 30.4 |
| 30 | 11.5 | - | 24 | 30.4 |
| 34 | 11.5 | - | 24 | 30.4 |
| 40 | 11.5 | - | 24 | 30.4 |
| 50 | 14.2 | 28.4 | 32 | 38.4 |
| 60 | 14.2 | 28.4 | 32 | 38.4 |
| 70 | 14.2 | 28.4 | 32 | 38.4 |
| 80 | 14.2 | 28.4 | 32 | 38.4 |

金具有り WITH ANCHOR PLATE



SECT. E-E (S=5/1)

| 寸法表 DIMENSION | | | | |
|----------------------|------|------|----|------|
| 極数 NO. OF POS. | A | B | C | D |
| 20 | 11.5 | - | 24 | 30.4 |
| 24 | 11.5 | - | 24 | 30.4 |
| 30 | 11.5 | - | 24 | 30.4 |
| 34 | 11.5 | - | 24 | 30.4 |
| 40 | 11.5 | - | 24 | 30.4 |
| 50 | 14.2 | 28.4 | 32 | 38.4 |
| 60 | 14.2 | 28.4 | 32 | 38.4 |
| 70 | 14.2 | 28.4 | 32 | 38.4 |
| 80 | 14.2 | 28.4 | 32 | 38.4 |

注文コード/Ordering Code

Part No. 24 5602 xxx 00x 829

極数 NUMBER OF CONTACTS

VARIATION CODE

- 0:金具無しボス無し WITHOUT ANCHOR PLATE AND WITHOUT BOSS
- 1:金具無しボス有り WITHOUT ANCHOR PLATE AND BOSS
- 2:金具有りボス無し WITH ANCHOR PLATE AND WITHOUT BOSS
- 3:金具有りボス有り WITH ANCHOR PLATE AND BOSS

Mouser Electronics

Authorized Distributor

Click to View Pricing, Inventory, Delivery & Lifecycle Information:

Kyocera AVX:

[245602060000829+](#) [145602016000829+](#) [245602080002829H+](#) [145602050000829H+](#) [245602016000829+](#)
[145602040002829H+](#) [245602040000829+](#) [145602020000829+](#) [245602030000829+](#) [245602020000829H+](#)
[145602030000829+](#) [145602040000829+](#) [145602016000829H+](#) [245602040000829H+](#) [145602030000829H+](#)
[145602024000829H+](#) [145602040000829H+](#) [245602070001829H+](#) [145602070001829H+](#) [145602020000829H+](#)
[145602034000829H+](#) [145602080000829S+](#) [245602030050829+](#) [245602070000829H+](#) [245602620000829H+](#)
[245602630000829H+](#) [245602650000829H+](#) [145602060000829H+](#) [245602060000829H+](#)