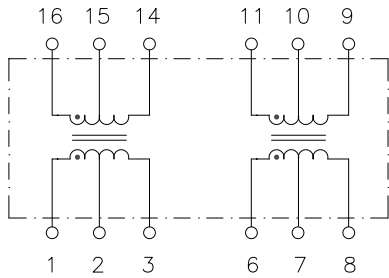
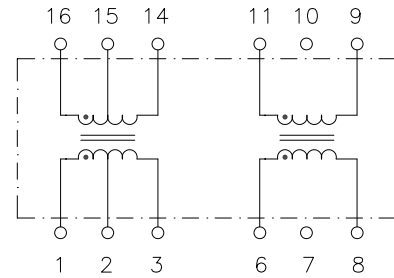


HALO Dual Channel T1/E1 Transformer

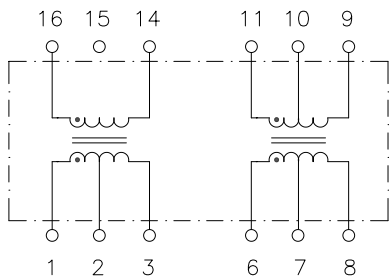
Circuit A



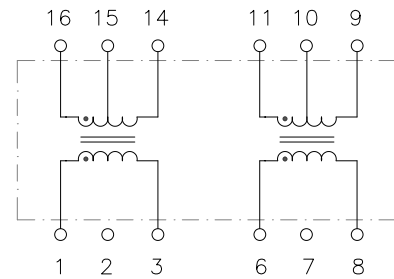
Circuit B



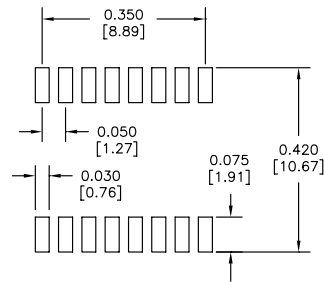
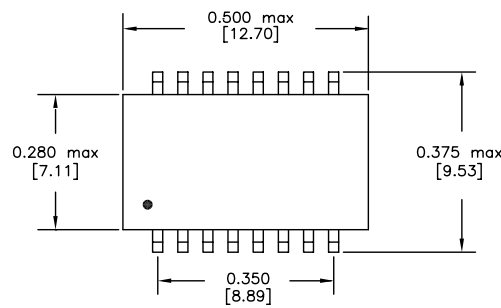
Circuit C



Circuit D

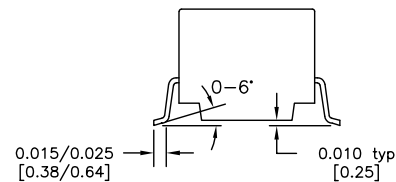
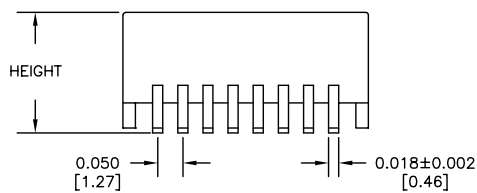


Mechanical



Recommended Solder Pad Layout

Dimensions: inch [mm]
Co-Planarity: 0.004 [0.10]



Patented Construction

US Patent Numbers:

5,656,985 6,297,721 B1

6,297,720 B1 6,320,489 B1

6,344,785 B1 6,662,431 B1

HALO
ELECTRONICS, INC.

2880 Lakeside Drive #116

Santa Clara, CA 95054

(650) 903-3800

www.haloelectronics.com

HALO® Electronics is a leading supplier of high quality communication magnetics including signal transformers, filters, CMR chokes, PoE power transformers, DC/DC converters, and integrated Ethernet connectors. HALO's leading edge technology solutions are manufactured in ISO9001 and ISO14001 factories offering high quality products at a competitive price.

© Copyright 2016 HALO Electronics, Inc. All rights reserved.

Revised 2/2015REVA. Download the latest version at www.haloelectronics.com/pdf/discrete-smddual-t1e1.pdf

Mouser Electronics

Authorized Distributor

Click to View Pricing, Inventory, Delivery & Lifecycle Information:

HALO Electronics:

[TG74-1505N5LF](#) [TG91-1505N5LF](#) [TG08-1205N1LF](#) [TG23-1505N5LF](#) [TG08-1205N1RLTR](#) [TG26-1505N1RLTR](#)
[TG24-1205N1RLTR](#) [TG48-1205N1RLTR](#) [TG38-1205N1RL](#) [TG42-1205N1RL](#) [TG27-1505N1RL](#) [TG64-1505N1RL](#)
[TG63-1205N1RLTR](#) [TG64-1205N1RL](#) [TG80-1205N1RL](#) [TG23-1505N1RLTR](#) [TG64-1505N1RLTR](#) [TG27-](#)
[1205N1RLTR](#) [TG42-1505N1RL](#) [TG42-1505N1RLTR](#) [TG48-1205N1RL](#) [TG26-1205N1RL](#) [TG26-1205N1RLTR](#) [TG73-](#)
[1205N1RL](#) [TG26-1505N1RL](#) [TG63-1505N1RLTR](#) [TG38-1205N1RLTR](#) [TG42-1205N1RLTR](#) [TG63-1505N1RL](#) [TG73-](#)
[1205N1RLTR](#) [TG80-1205N1RLTR](#) [TG91-1505N1RLTR](#) [TG27-1505N1RLTR](#) [TG24-1205N1RL](#) [TG64-1205N1RLTR](#)
[TG27-1205N1RL](#) [TG74-1505N1RLTR](#) [TG74-1205N1RL](#) [TG74-1205N1RLTR](#) [TG63-1205N1RL](#) [TG38-1505N5LF](#)
[TG42-1505N5LF](#) [TG08-1505N5LF](#) [TG38-1205N1LF](#) [TG42-1205N1LF](#) [TG26-1205N1LF](#) [TG74-1205N1LF](#) [TG64-](#)
[1205N1LF](#) [TG73-1205N5LF](#) [TG63-1205N1LF](#) [TG26-1505N5LF](#) [TG27-1205N1LF](#) [TG27-1505N5LF](#) [TG63-1505N5LF](#)
[TG80-1205N5LF](#) [TG48-1205N1LF](#) [TG73-1505N5LF](#) [TG24-1505N5LF](#) [TG64-1505N5LF](#) [TG48-1505N5LF](#) [TG24-](#)
[1205N1LF](#) [TG74-1505N5LFTR](#) [TG91-1505N5LFTR](#) [TG48-1205N1LFTR](#) [TG26-1205N1LFTR](#) [TG74-1205N1LFTR](#)
[TG38-1205N1LFTR](#) [TG08-1205N1LFTR](#) [TG27-1205N1LFTR](#) [TG24-1205N1LFTR](#) [TG64-1205N1LFTR](#) [TG42-](#)
[1205N1LFTR](#) [TG28-1505NCRLTR](#) [TG38-1505NCRL](#) [TG38-1505NCRLTR](#) [TG42-1505NCRL](#) [TG63-1505NCRLTR](#)
[TG64-1505NCRLTR](#)