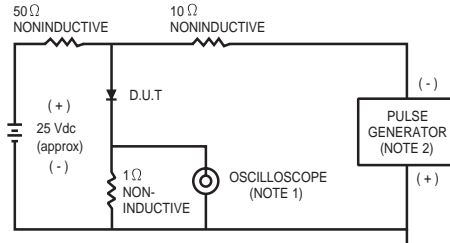


# RATING AND CHARACTERISTIC CURVES ( HER101 THRU HER108 )

FIG. 1 - TEST CIRCUIT DIAGRAM AND REVERSE RECOVERY TIME CHARACTERISTIC



NOTES: 1. Rise Time = 7ns max. Input Impedance = 1 megohm, 22pF.  
2. Rise Time = 10ns max. Source Impedance = 50 ohms.

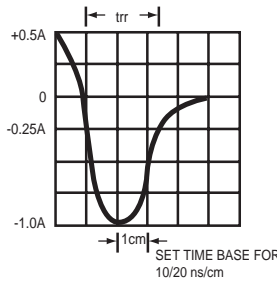


FIG. 2 - TYPICAL FORWARD CURRENT DERATING CURVE

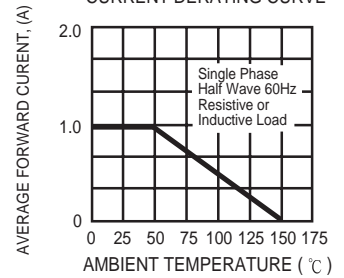


FIG. 3 - TYPICAL REVERSE CHARACTERISTICS

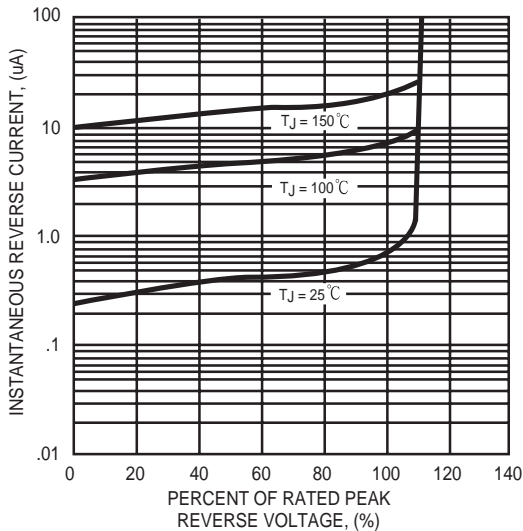


FIG. 4 - TYPICAL INSTANTANEOUS FORWARD CHARACTERISTICS

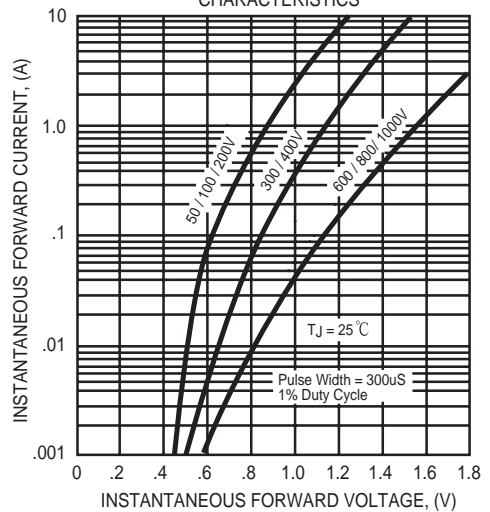


FIG. 5 - MAXIMUM NON-REPETITIVE FORWARD SURGE CURRENT

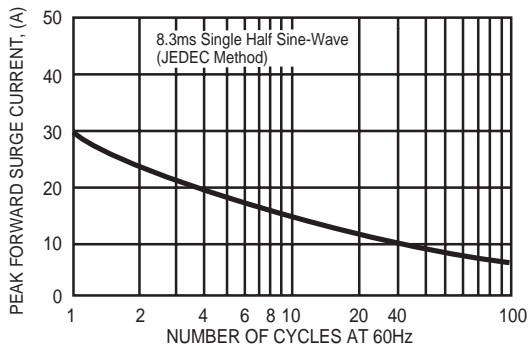
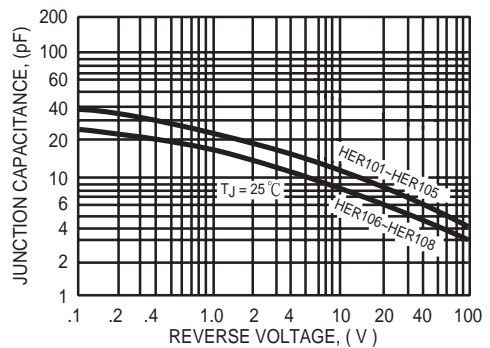


FIG. 6 - TYPICAL JUNCTION CAPACITANCE



# Mouser Electronics

Authorized Distributor

Click to View Pricing, Inventory, Delivery & Lifecycle Information:

## Rectron:

[HER101-B](#) [HER103-B](#) [HER104-B](#) [HER105-B](#) [HER106-B](#) [HER107-B](#) [HER108-B](#) [HER101-T](#) [HER108-T](#) [HER153-T](#) [HER153-B](#) [HER103-T](#) [HER107-T](#) [HER105-T](#) [HER108-T-S-R01-B](#) [HER108-T-S-R01-T](#) [HER108-T-S-NT-B](#) [HER108-T-S-NT-T](#) [HER154-T](#) [HER154-B](#) [HER106-T](#) [HER152-T](#) [HER152-B](#) [HER156-T](#) [HER156-B](#) [HER155-T](#) [HER155-B](#) [HER151-B](#) [HER151-T](#) [HER104-T](#) [HER102-B](#) [HER102-T](#) [HER105-T-S-NT-B](#) [HER105-T-S-NT-T](#)