

# IC series

Pushbutton switches for harsh environments • short case • bushing Ø 12 mm • momentary

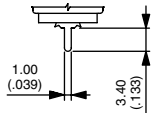


## MATERIALS

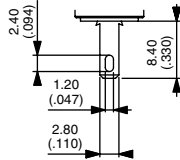
- Case : thermoplastic UL94-V0
- Actuator : polyamide 6/6
- Bushing/bezel : zinc die-cast (zamac), black painted
- Contacts : silver, gold plated
- Multi-wire leads AWG20, section 0.6 mm<sup>2</sup>
- Terminal seal : epoxy



## TERMINALS



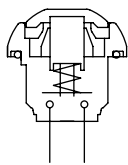
Straight P



Quick-connect Z1



## ELECTRICAL FUNCTIONS

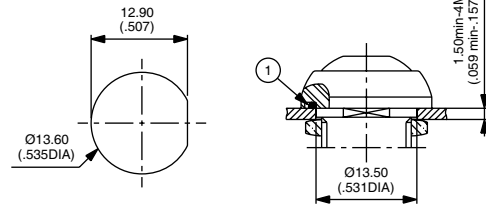


Function 3 (NO)



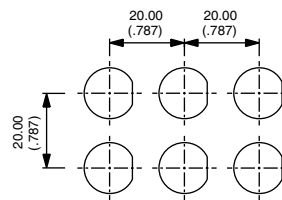
## MOUNTING

### PANEL CUT-OUT

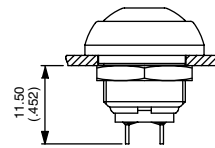


① - O-ring

### MATRIX MOUNTING



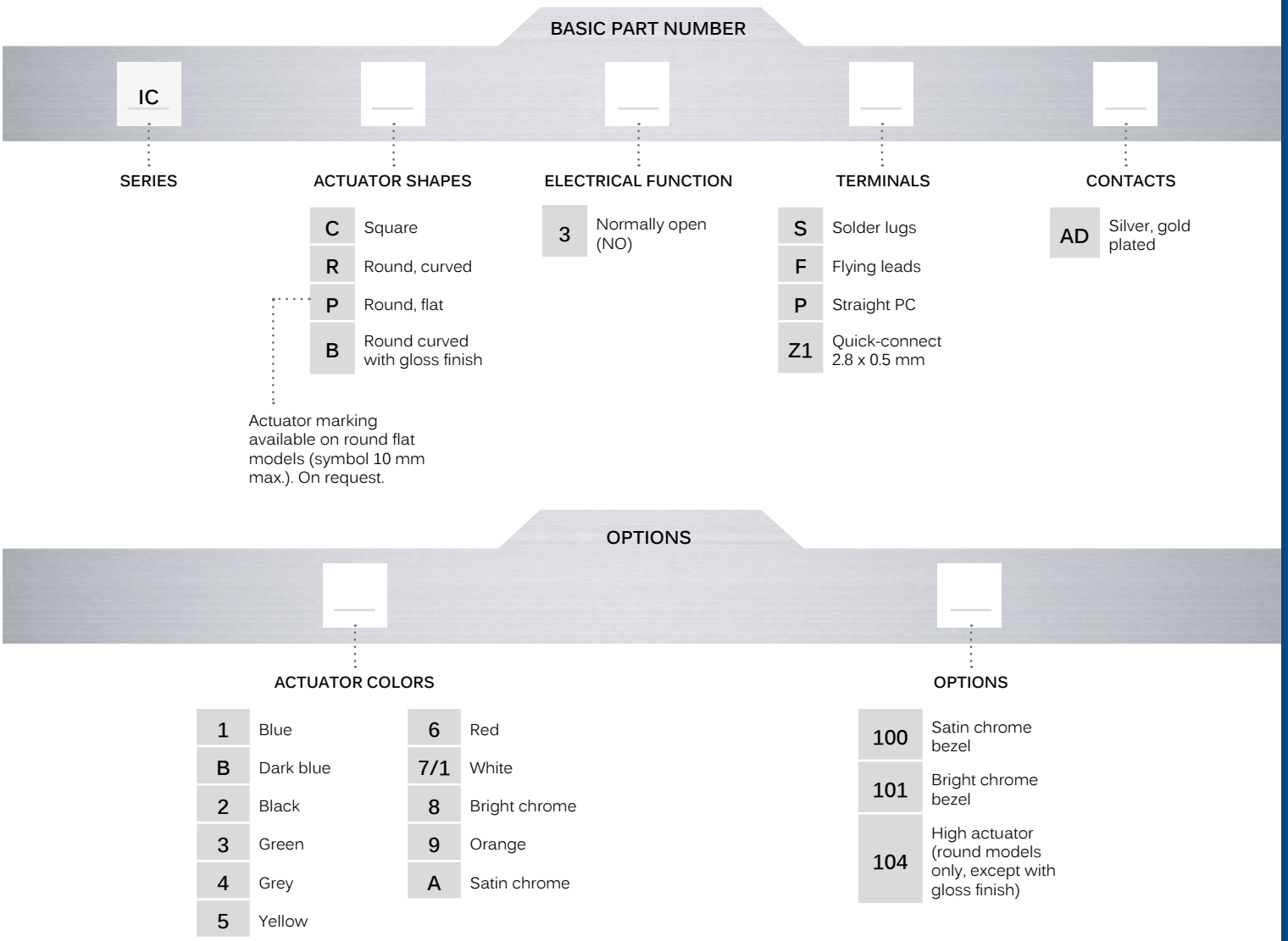
### BACK OF PANEL SPACE REQUIREMENT



Pushbutton switches for harsh environments • short case • bushing Ø 12 mm • momentary



## BUILD YOUR PART NUMBER



## ABOUT THIS SERIES

On the following pages, you will find successively basic part numbers of switches and options in the same order as in above chart.

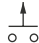
- Notice** : please note that not all combinations of above numbers are available. Refer to the following pages for further information.
- A sealing boot** is available to protect the switches against frost and sand (P/N U5125). See "Sealing Boots" section of website.
- Mounting accessories** : Standard hardware supplied : 1 hex nut 14 mm (.551) across flats and 1 O-Ring. Hex nut part number U166.

# IC series

Pushbutton switches for harsh environments • short case • bushing Ø 12 mm • momentary

## SQUARE - SOLDER LUG TERMINALS

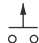


**ICC3SAD**  Normally Open

Also available with straight PC terminals : ICC3PAD  
and quick-connect terminals : ICC3Z1AD


## SQUARE - FLYING LEAD TERMINALS



**ICC3FAD**  Normally Open

## ROUND - SOLDER LUG TERMINALS



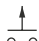
Curved actuator  
**ICR3SAD**  Normally Open

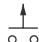
Flat actuator  
**ICP3SAD**  Normally Open

Also available with straight PC terminals : IC•3PAD  
and quick-connect terminals : IC•3Z1AD

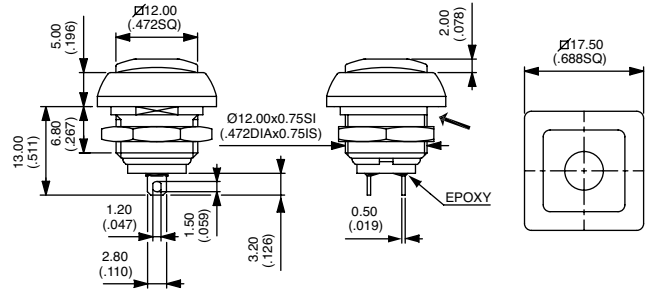
## ROUND - FLYING LEAD TERMINALS



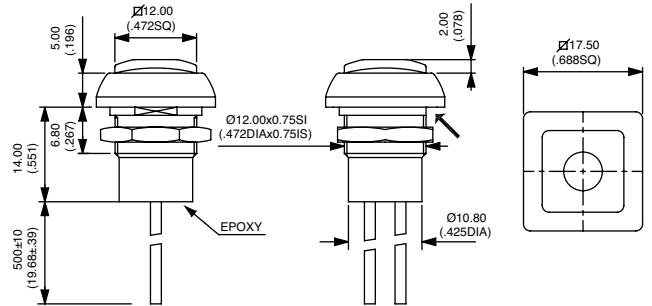
Curved actuator  
**ICR3FAD**  Normally Open

Flat actuator  
**ICP3FAD**  Normally Open

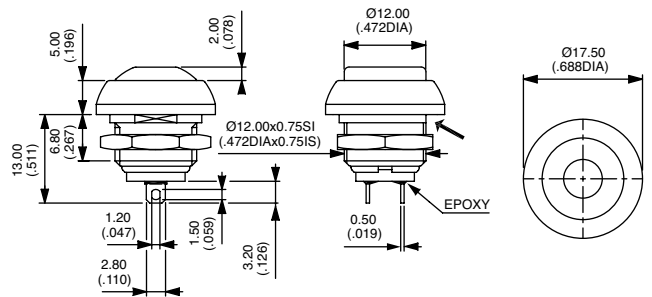
→ FLAT



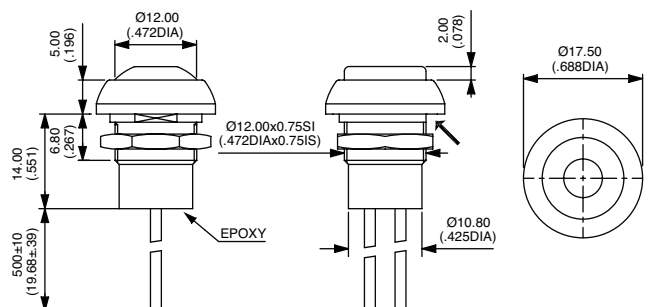
→ FLAT



→ FLAT



→ FLAT



# IC series

Pushbutton switches for harsh environments • short case • bushing  $\varnothing$  12 mm • momentary

## ACTUATOR COLORS

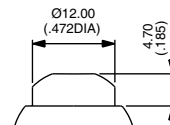


- 1 Blue
- B Dark blue
- 2 Black
- 3 Green
- 4 Grey
- 5 Yellow
- 6 Red
- 7/1 White
- 8 Bright chrome
- 9 Orange
- A Satin chrome

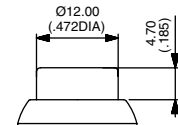
## OPTIONS



- 100 Satin chrome bezel
- 101 Bright chrome bezel
- 104 High actuator (round models only, except with gloss finish)



104 IPR



104 IPP

# Mouser Electronics

Authorized Distributor

Click to View Pricing, Inventory, Delivery & Lifecycle Information:

## [Apem:](#)

[ICC3PAD2101](#) [ICR3FAD2](#) [ICP3FAD2](#) [ICP3FAD2104](#) [ICP3SAD2](#) [ICP3SAD2104](#) [ICP3Z1AD2](#) [ICP3Z1AD2101](#)  
[ICC3FAD2100](#) [ICC3FAD2101](#) [ICC3PAD2](#) [ICC3PAD2100](#) [ICC3SAD2](#) [ICC3SAD2100](#) [ICR3FAD2101](#) [ICR3FAD2104](#)  
[ICR3PAD2](#) [ICP3PAD2100](#) [ICP3PAD2104](#) [ICP3SAD2100](#) [ICP3SAD2101](#) [ICP3Z1AD2100](#) [ICR3FAD2100](#)  
[ICC3SAD2101](#) [ICC3Z1AD2](#) [ICC3Z1AD2100](#) [ICC3Z1AD2101](#) [ICP3FAD2101](#) [ICP3PAD2](#) [ICC3FAD2](#) [ICR3SAD5](#)  
[ICP3SAD3](#) [ICP3FAD6104](#)