

TO  
 □  
 □  
 □

SPECIFICATIONS				
ITEM	TEST METHOD	REQUIREMENTS	QT	AT
SOLDERBILITY	SOLERRING POINT OF CONTACTS IMMERSION IN SOLDER BATH OF 350±5°C, 2±0.5 sec.	SOLDERING POINT OF CONTACTS IMMERSION IN SOLDER, 90% MIN.	<input type="radio"/>	—
RESISTANCE TO SOLDERING HEAT	MOLTEN-SDDER TEMPERATURE: 260±5°C. IMMERSION FURABILITY PER LOCATION: 2± 1 sec.	NO DAMAGE, CRACK AND LOOSENESS, OF PARTS.	<input type="radio"/>	—

REMARKS	DRAWN	DESIGNED	CHECKED	APPROVED	RELEASED
	<i>M. Shimogawa</i> 04.2.27	<i>M. Shimogawa</i> 04.2.27	<i>H. Ishikawa</i> 04.3.1	<i>[Signature]</i> 04.3.2	

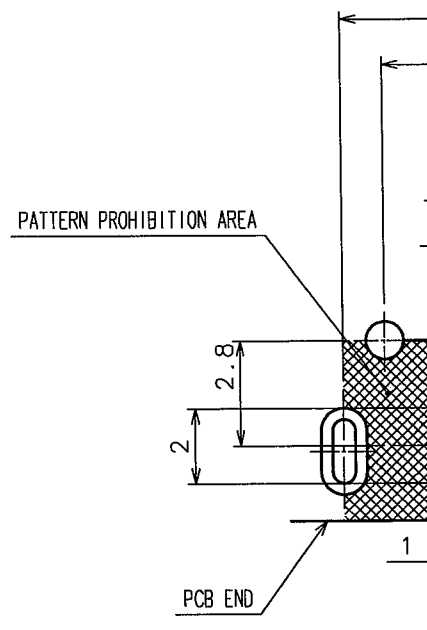
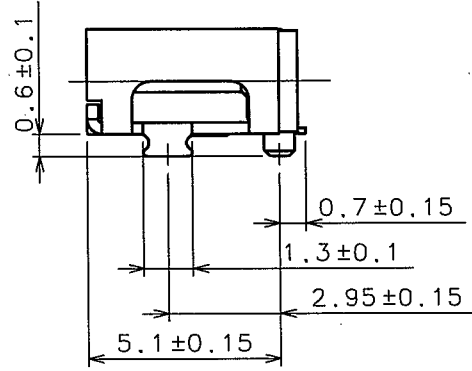
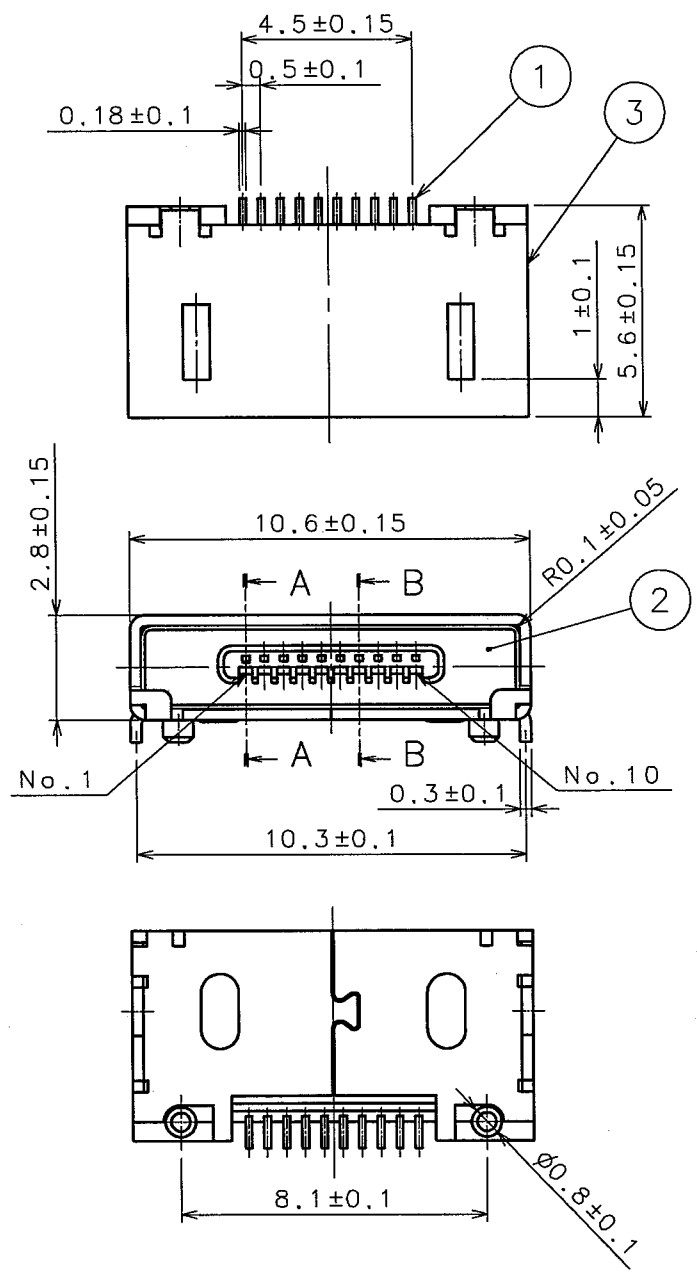
Unless otherwise specified, refer to JIS C 5402.  
 Note QT:Qualification Test AT:Assurance Test ○:Applicable Test

<b>HRS</b> HIROSE ELECTRIC CO., LTD.	SPECIFICATION SHEET	PART NO. MQ212-10P
CODE NO.(OLD) CL	DRAWING NO. ELC4-124599	CODE NO. CL206-2446-5

2/2

COUNT	DESCRIPTION OF REVISIONS	BY

RECOMMENDED



A-A (10:1)  
(CONTACT No. 1, 10)

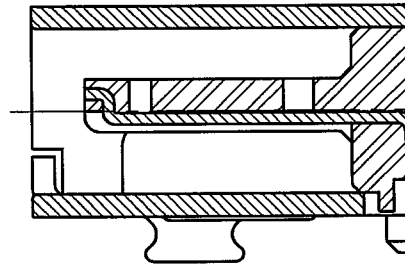
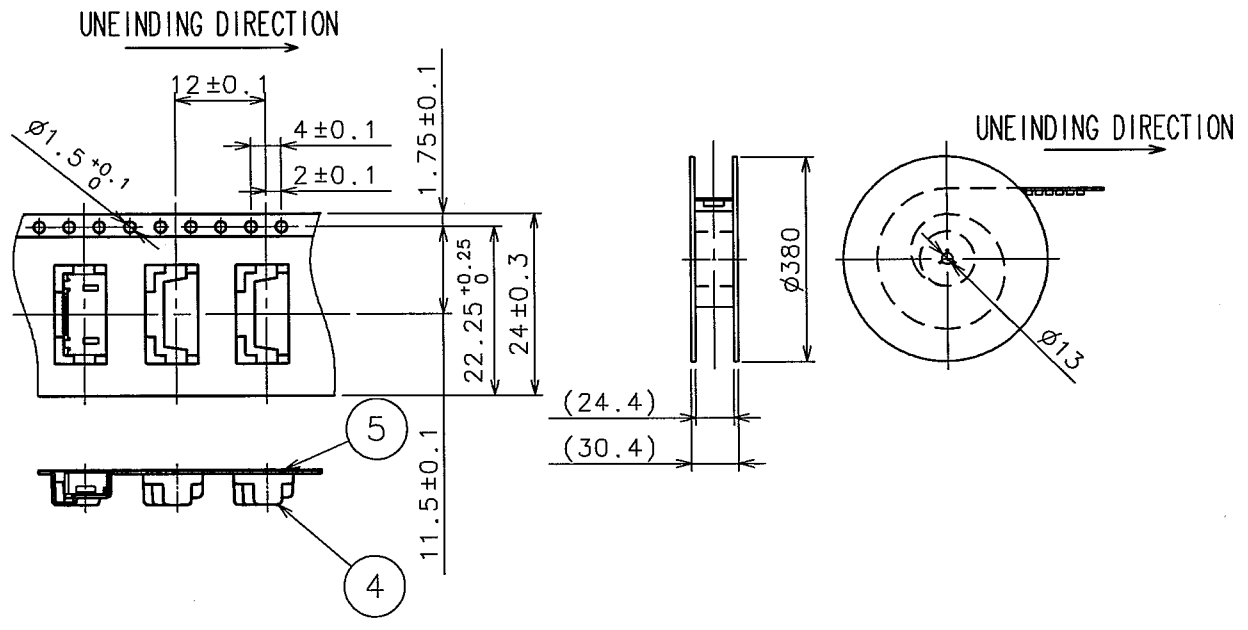


FIGURE FOR PACKING

NOTE 1 PE  
2 CO



TO
Q

2	LCP	UL94V-0 (BL)
1	PHOSPHOR BRONZE	UNDER PLATING: CONTACT AREA: GOLD LEAD AREA: GOLD

NO.	MATERIAL	FINISH, I
CODE NO. (OLD)		

SCALE	DRAWING NO.
5 : 1	EDC3-124
UNITS	<b>HRS</b> HIROSE ELECT
mm	