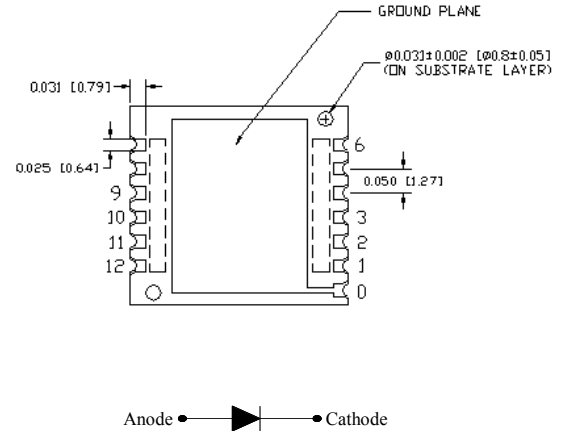
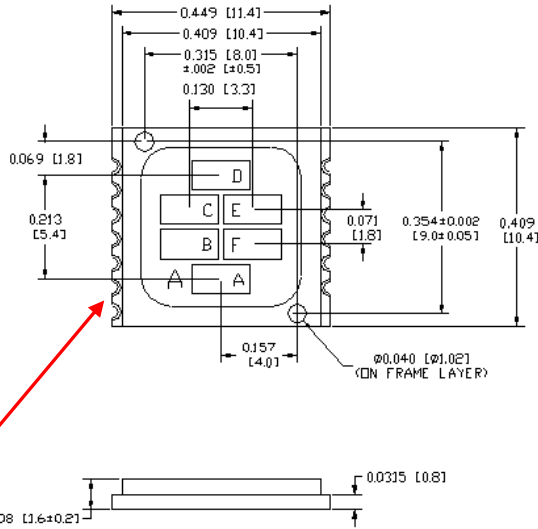


Six-Element SMD Photodiode Array



OPR2100



Absolute Maximum Ratings ($T_A = 25^\circ\text{C}$ unless otherwise noted)

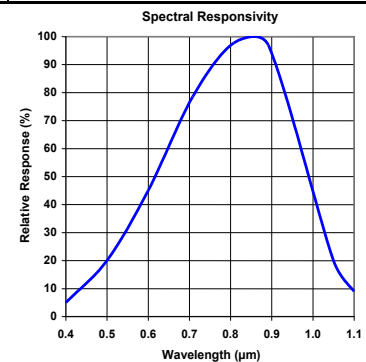
Storage and Operating Temperature	-55° C to +125° C
Reverse Breakdown Voltage	50 V / minute
Solder reflow time within 5°C of peak temperature is 20 to 40 seconds ⁽¹⁾	250° C

Electrical Characteristics ($T_A = 25^\circ\text{C}$ unless otherwise noted)

SYMBOL	PARAMETER	MIN	TYP	MAX	UNITS	TEST CONDITIONS
R	Responsivity	0.45	-	-	A/W	$E_c = 10\ \mu\text{W}$, $\lambda = 890\ \text{nm}$, $V = 0\ \text{V}$
V_{BR}	Reverse Breakdown Voltage	50	-	-	V	$I_R = 10\ \mu\text{A}$
I_D	Reverse Dark Current	-	-	10	nA	$V_R = 10\ \text{V}$, $E_c = 0$
B_W	Bandwidth	-	-	200	kHz	$T_A \leq 125^\circ\text{C}$
C_T	Capacitance	-	10	-	pF	$V_R = 10\ \text{V}$
Lx W	Active Area (per diode)	-	3.45	-	mm ²	2.73 mm x 1.34 mm

Notes:

- Solder time less than 5 seconds at temperature extreme.
- Package thermal resistance is 142° C / W



General Note

TT Electronics reserves the right to make changes in product specification without notice or liability. All information is subject to TT Electronics' own data and is considered accurate at time of going to print.

TT Electronics | Optek Technology, Inc.
1645 Wallace Drive, Ste. 130, Carrollton, TX USA 75006 | Ph: +1 972 323 2200
www.ttelectronics.com | sensors@ttelectronics.com

Mouser Electronics

Authorized Distributor

Click to View Pricing, Inventory, Delivery & Lifecycle Information:

[TT Electronics:](#)

[OPR2100](#) [OPR2100T](#)