

<b>THERMAL PERFORMANCE</b>			
<b>PARAMETER</b>	<b>SYMBOL</b>	<b>TYP</b>	<b>UNIT</b>
Junction-to-lead thermal resistance	$R_{\theta JL}$	17	°C/W
Junction-to-ambient thermal resistance	$R_{\theta JA}$	55	°C/W

<b>ELECTRICAL SPECIFICATIONS</b> ( $T_A = 25^\circ\text{C}$ unless otherwise noted)									
<b>PARAMETER</b>		<b>CONDITIONS</b>	<b>SYMBOL</b>	<b>TYP</b>	<b>MAX</b>	<b>UNIT</b>			
Forward voltage <sup>(1)</sup>	SS32 SS33 SS34	$I_F = 3\text{A}, T_J = 25^\circ\text{C}$	$V_F$	-	0.50	V			
	SS35 SS36			-	0.75	V			
	SS39 SS310			-	0.85	V			
	SS315 SS320			-	0.95	V			
	SS32 SS33 SS34			$I_F = 3\text{A}, T_J = 100^\circ\text{C}$	-	0.40	V		
	SS35 SS36				-	0.65	V		
	SS39 SS310	-			0.70	V			
	SS315 SS320	-			0.80	V			
	Reverse current @ rated $V_R$ <sup>(2)</sup>	SS32 SS33 SS34 SS35 SS36			$T_J = 25^\circ\text{C}$	$I_R$	-	0.5	mA
		SS39 SS310 SS315 SS320					-	0.1	mA
		SS32 SS33 SS34		$T_J = 100^\circ\text{C}$	-		10	mA	
		SS35 SS36			-		5	mA	
SS39 SS310 SS315 SS320		-	-		mA				
SS32 SS33 SS34		$T_J = 125^\circ\text{C}$	-		-		mA		
SS35 SS36			-		-		mA		
SS39 SS310 SS315 SS320			-		0.5		mA		

**Notes:**

1. Pulse test with  $PW = 0.3\text{ms}$
2. Pulse test with  $PW = 30\text{ms}$

<b>ORDERING INFORMATION</b>		
<b>ORDERING CODE<sup>(1)</sup></b>	<b>PACKAGE</b>	<b>PACKING</b>
SS3x	DO-214AB (SMC)	3,000 / Tape & Reel

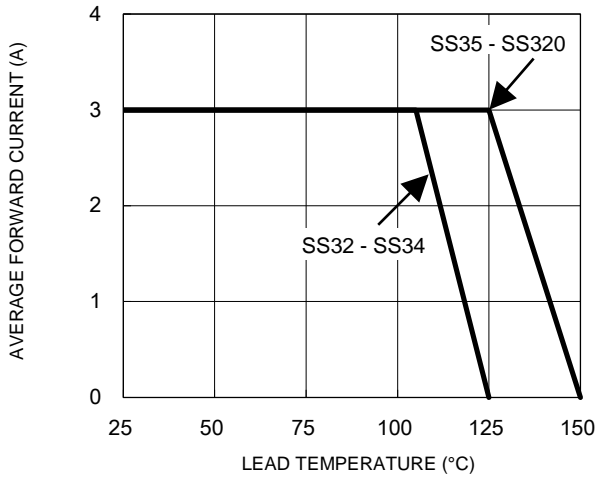
**Notes:**

1. “x” defines voltage from 20V(SS32) to 200V(SS320)

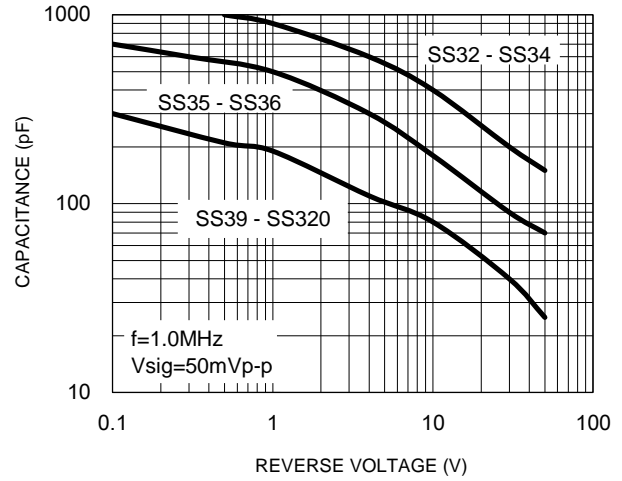
**CHARACTERISTICS CURVES**

( $T_A = 25^\circ\text{C}$  unless otherwise noted)

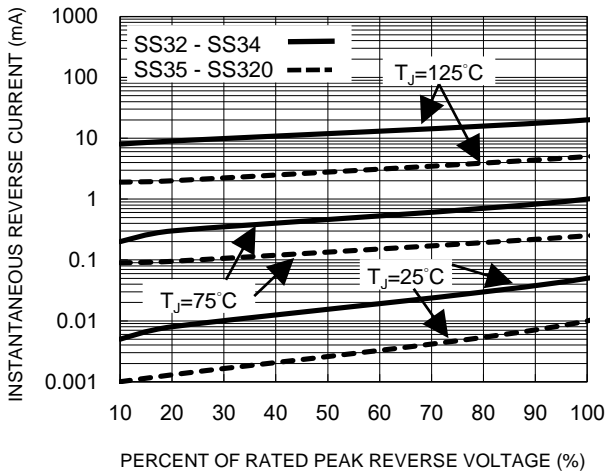
**Fig.1 Forward Current Derating Curve**



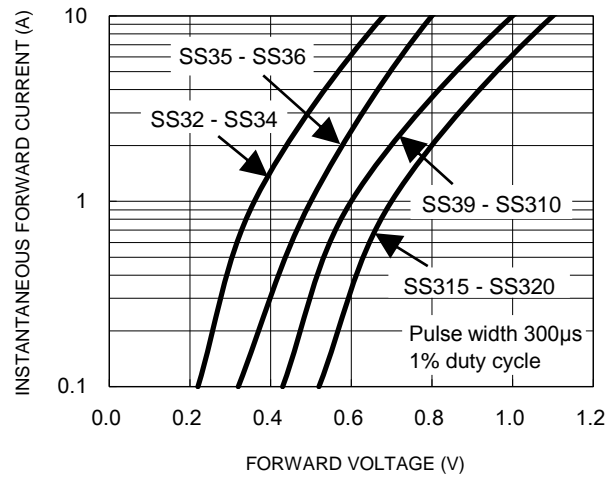
**Fig.2 Typical Junction Capacitance**



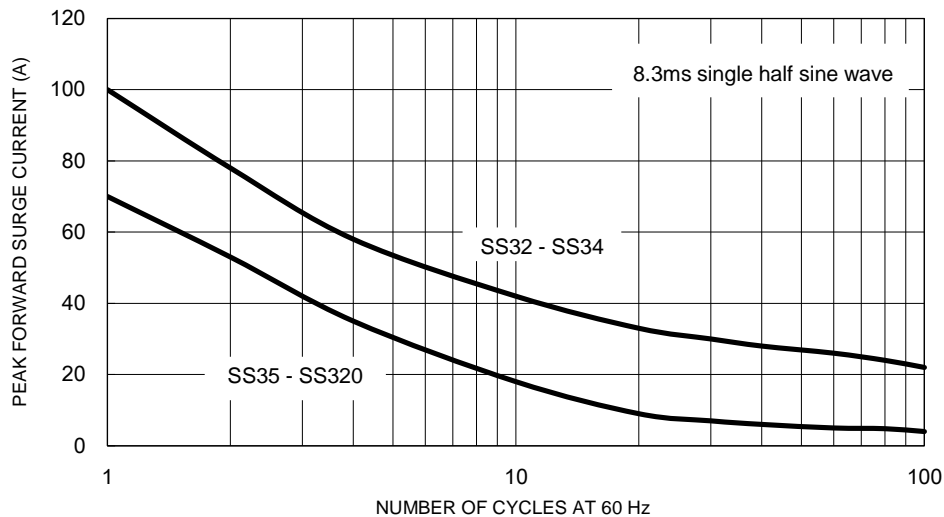
**Fig.3 Typical Reverse Characteristics**



**Fig.4 Typical Forward Characteristics**



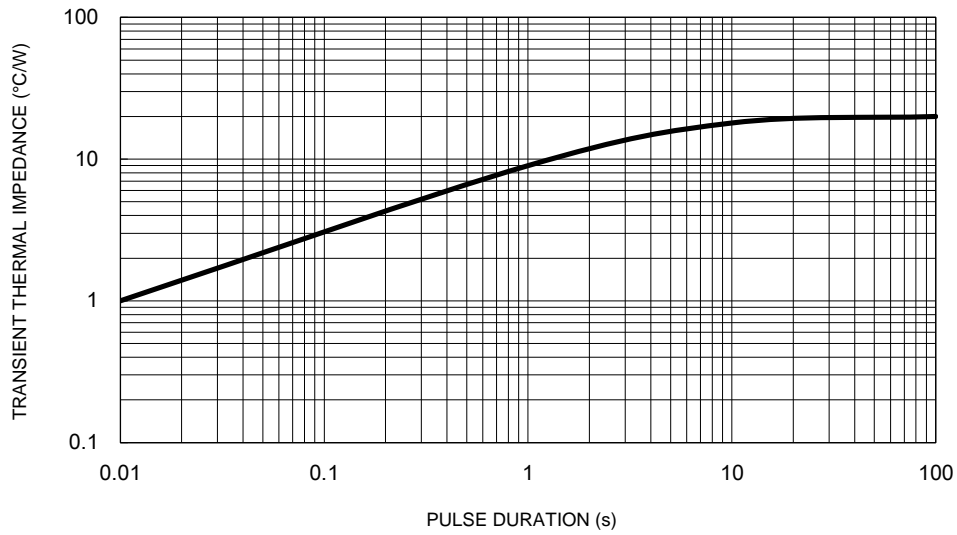
**Fig.5 Maximum Non-Repetitive Forward Surge Current**



**CHARACTERISTICS CURVES**

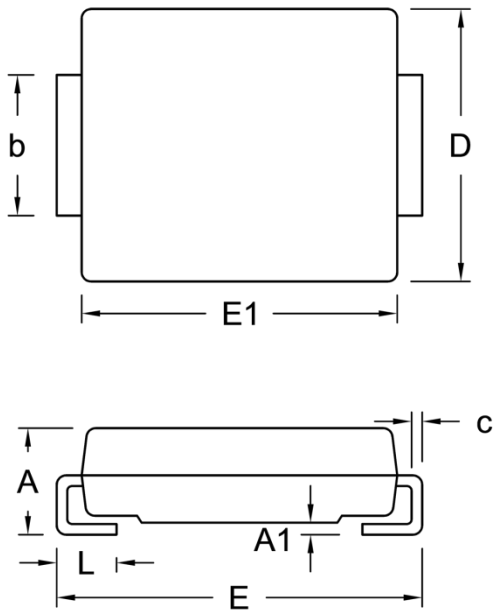
( $T_A = 25^\circ\text{C}$  unless otherwise noted)

**Fig.6 Typical Transient Thermal Characteristics**



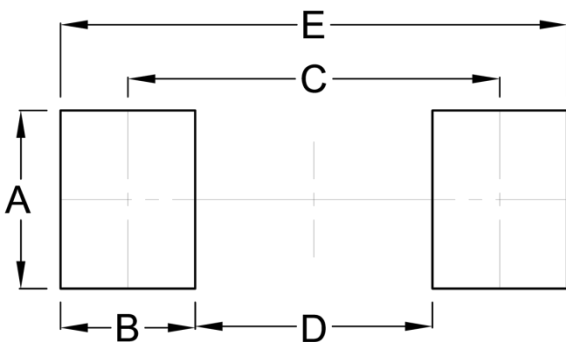
**PACKAGE OUTLINE DIMENSIONS**

DO-214AB (SMC)



DIM.	Unit (mm)		Unit (inch)	
	Min.	Max.	Min.	Max.
A	2.00	2.62	0.079	0.103
A1	0.10	0.20	0.004	0.008
b	2.90	3.20	0.114	0.126
c	0.15	0.31	0.006	0.012
D	5.59	6.22	0.220	0.245
E	7.75	8.13	0.305	0.320
E1	6.60	7.11	0.260	0.280
L	1.00	1.60	0.039	0.063

**SUGGESTED PAD LAYOUT**



Symbol	Unit (mm)	Unit (inch)
A	3.30	0.130
B	2.50	0.098
C	6.90	0.272
D	4.40	0.173
E	9.40	0.370

**MARKING DIAGRAM**



- P/N = Marking Code
- G = Green Compound
- YW = Date Code
- F = Factory Code

## **Notice**

Specifications of the products displayed herein are subject to change without notice. TSC or anyone on its behalf, assumes no responsibility or liability for any errors or inaccuracies.

Purchasers are solely responsible for the choice, selection, and use of TSC products and TSC assumes no liability for application assistance or the design of Purchasers' products.

Information contained herein is intended to provide a product description only. No license, express or implied, to any intellectual property rights is granted by this document. Except as provided in TSC's terms and conditions of sale for such products, TSC assumes no liability whatsoever, and disclaims any express or implied warranty, relating to sale and/or use of TSC products including liability or warranties relating to fitness for a particular purpose, merchantability, or infringement of any patent, copyright, or other intellectual property right.

The products shown herein are not designed for use in medical, life-saving, or life-sustaining applications. Customers using or selling these products for use in such applications do so at their own risk and agree to fully indemnify TSC for any damages resulting from such improper use or sale.

# Mouser Electronics

Authorized Distributor

Click to View Pricing, Inventory, Delivery & Lifecycle Information:

[Taiwan Semiconductor:](#)

[SS35](#) [SS33](#) [SS36](#) [SS34](#) [SS315](#) [SS310](#) [SS320](#)