

**ORDERING INFORMATION**

| PART NO.   | PACKING CODE | PACKING CODE SUFFIX | PACKAGE | PACKING                 |
|------------|--------------|---------------------|---------|-------------------------|
| TSPB15U45S | S1           | G                   | SMPC4.0 | 1,500/ 7" Plastic reel  |
|            | S2           |                     | SMPC4.0 | 6,000/ 13" Plastic reel |

Note: Whole series with green compound

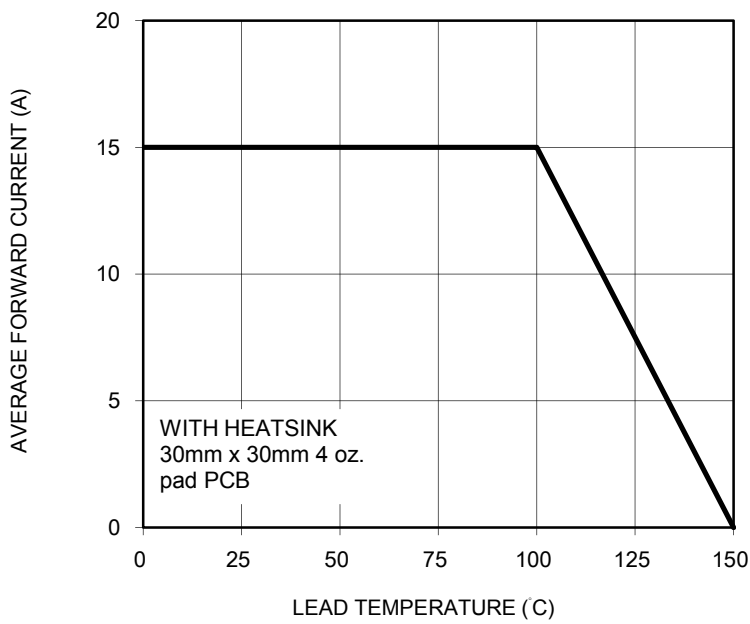
**EXAMPLE**

| EXAMPLE PART NO. | PART NO.   | PACKING CODE | PACKING CODE SUFFIX | DESCRIPTION    |
|------------------|------------|--------------|---------------------|----------------|
| TSPB15U45S S1G   | TSPB15U45S | S1           | G                   | Green compound |

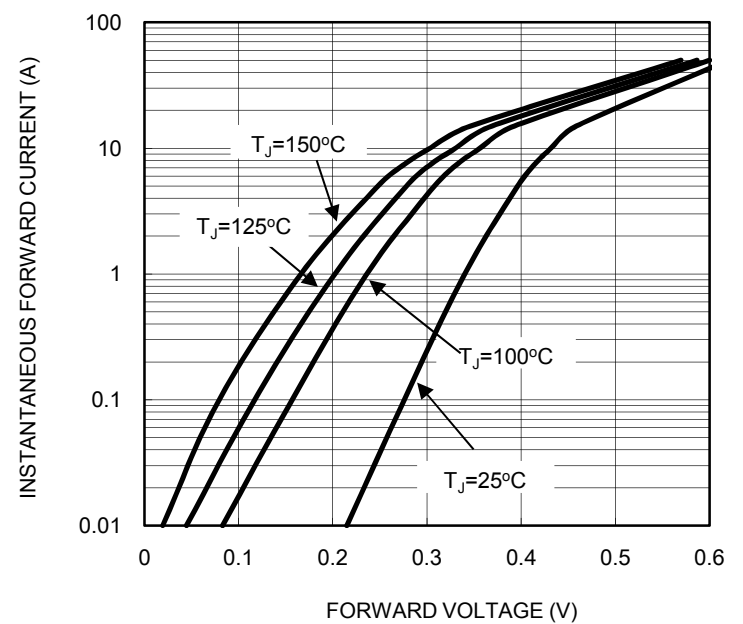
**RATINGS AND CHARACTERISTICS CURVES**

( $T_A = 25^\circ\text{C}$  unless otherwise noted)

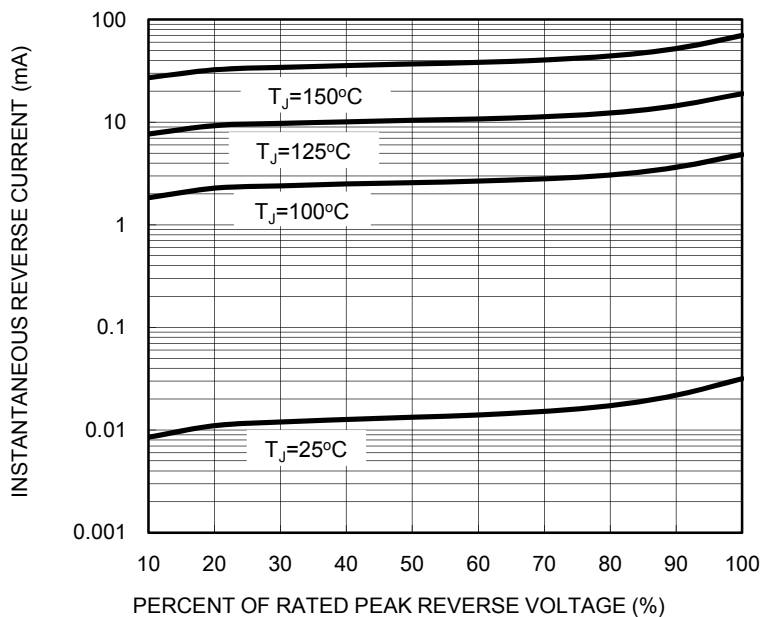
**FIG.1 FORWARD CURRENT DERATING CURVE**



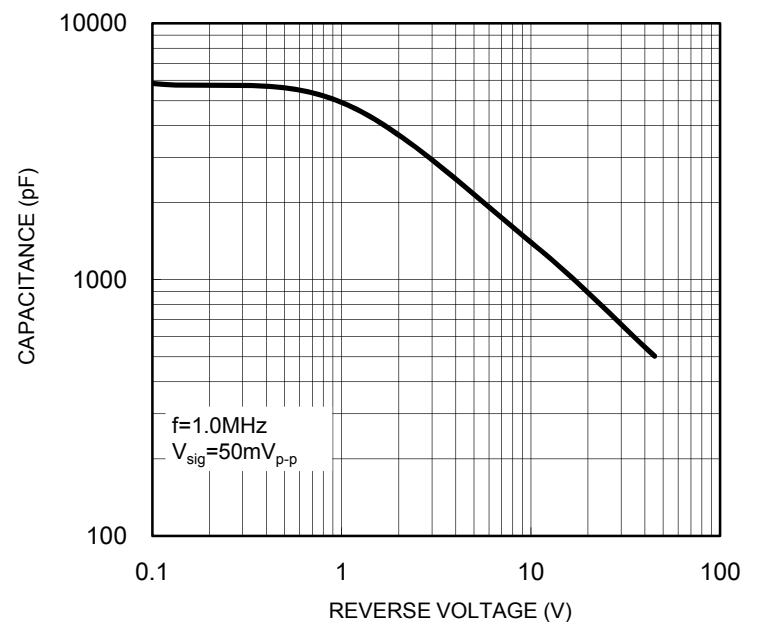
**FIG. 2 TYPICAL FORWARD CHARACTERISTICS**



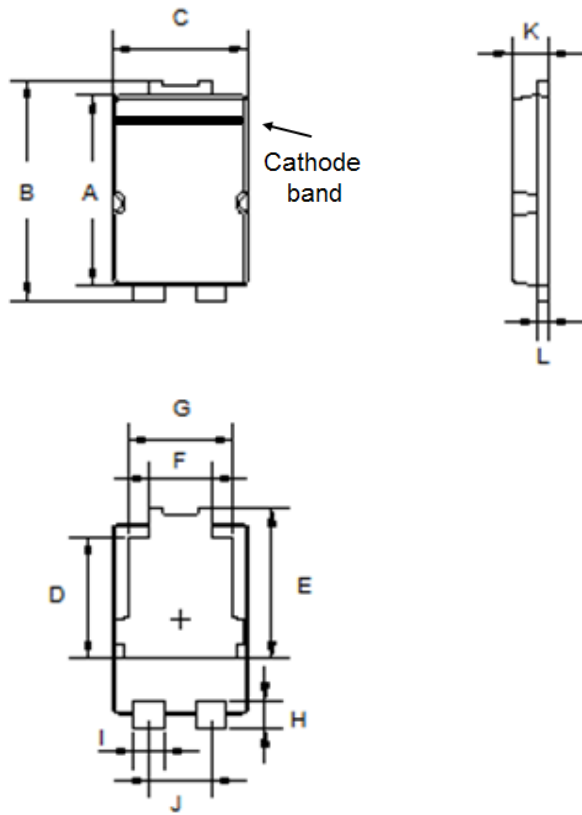
**FIG. 3 TYPICAL REVERSE CHARACTERISTICS**



**FIG. 4 TYPICAL JUNCTION CAPACITANCE**

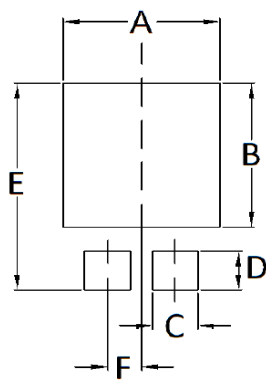


PACKAGE OUTLINE DIMENSIONS  
**SMPC4.0**



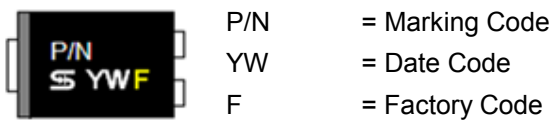
| DIM. | Unit (mm) |      | Unit (inch) |       |
|------|-----------|------|-------------|-------|
|      | Min       | Max  | Min         | Max   |
| A    | 5.55      | 5.65 | 0.219       | 0.222 |
| B    | 6.35      | 6.65 | 0.250       | 0.262 |
| C    | 3.95      | 4.05 | 0.156       | 0.159 |
| D    | 3.40      | 3.70 | 0.134       | 0.146 |
| E    | 4.25      | 4.55 | 0.167       | 0.179 |
| F    | 1.69      | 1.99 | 0.067       | 0.078 |
| G    | 2.95      | 3.25 | 0.116       | 0.128 |
| H    | 0.70      | 1.00 | 0.028       | 0.039 |
| I    | 0.75      | 1.05 | 0.030       | 0.041 |
| J    | 1.69      | 1.99 | 0.067       | 0.078 |
| K    | 1.00      | 1.20 | 0.039       | 0.047 |
| L    | 0.20      | 0.40 | 0.008       | 0.016 |

SUGGESTED PAD LAYOUT



| Symbol | Unit (mm) | Unit (inch) |
|--------|-----------|-------------|
| A      | 4.80      | 0.189       |
| B      | 4.72      | 0.186       |
| C      | 1.40      | 0.055       |
| D      | 1.27      | 0.050       |
| E      | 6.80      | 0.268       |
| F      | 0.92      | 0.036       |

MARKING DIAGRAM



## Notice

Specifications of the products displayed herein are subject to change without notice. TSC or anyone on its behalf, assumes no responsibility or liability for any errors or inaccuracies.

Information contained herein is intended to provide a product description only. No license, express or implied, to any intellectual property rights is granted by this document. Except as provided in TSC's terms and conditions of sale for such products, TSC assumes no liability whatsoever, and disclaims any express or implied warranty, relating to sale and/or use of TSC products including liability or warranties relating to fitness for a particular purpose, merchantability, or infringement of any patent, copyright, or other intellectual property right.

The products shown herein are not designed for use in medical, life-saving, or life-sustaining applications. Customers using or selling these products for use in such applications do so at their own risk and agree to fully indemnify TSC for any damages resulting from such improper use or sale.

# Mouser Electronics

Authorized Distributor

Click to View Pricing, Inventory, Delivery & Lifecycle Information:

[Taiwan Semiconductor:](#)

[TSPB15U45S](#) [TSPB15U45S S1G](#) [TSPB15U45S S2G](#)