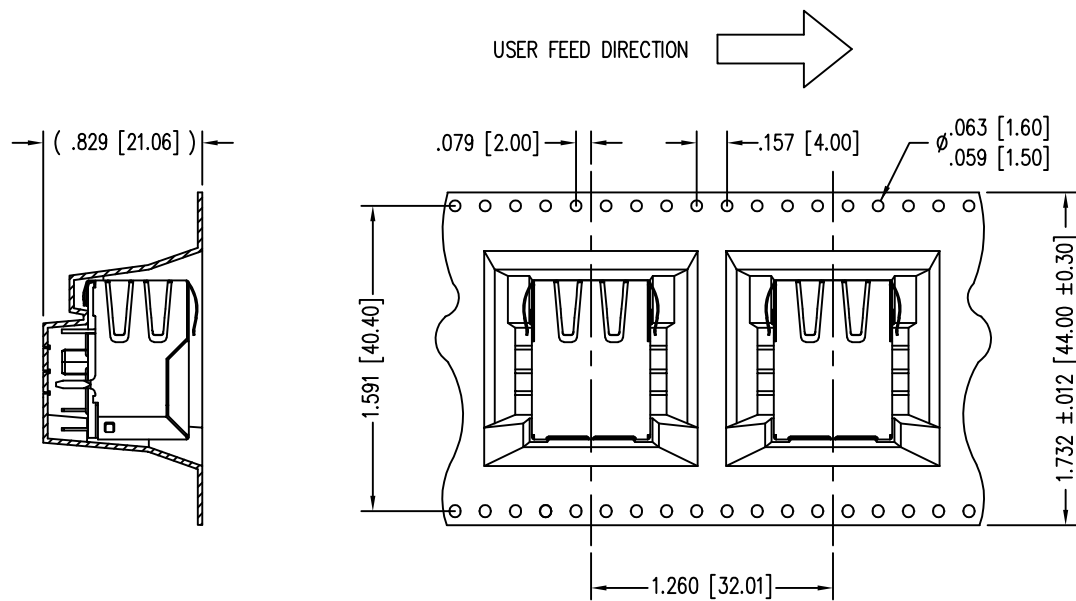
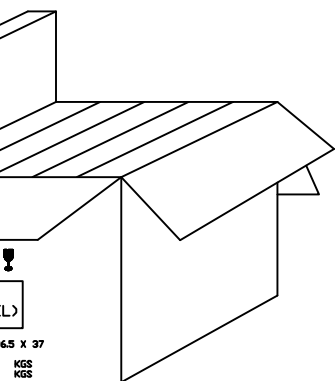


2.0] PITCH)



PART ORIENTATION & FEEDING DIRECTION.
PART SS74800-103F ONLY



BOX
X 14.125 [358.8] W X 14.25 [361.9] H)

IS PACKED IN A HEAT SEALED MOISTURE BARRIER
NG WITH DESICCANT AND MOISTURE INDICATOR CARD.

LS TO INCLUDE:

TURING DATE

RoHS



THIRD ANGLE PROJECTION 	 11118 Susquehanna Trail South Glen Rock, PA 17327-9199 (717) 235-7512 http://www.stewartconnector.com
DO NOT SCALE DRAWING DRAWING IS SUBJECT TO CHANGE WITHOUT NOTICE	TITLE: EMI-RFI ONE PIECE SHIELDED SINGLE PORT CAT 5 LED JACK, .150" LEADS, DIAMOND POSTS
DIMENSIONS: INCHES [METRIC]	THIS DRAWING AND THE SUBJECT MATTER SHOWN THEREON ARE CONFIDENTIAL AND THE PROPRIETARY PROPERTY OF STEWART CONNECTOR AND SHALL NOT BE REPRODUCED, COPIED, OR USED IN ANY MANNER WITHOUT PRIOR WRITTEN CONSENT OF STEWART CONNECTOR. ONE OR MORE U.S. PATENTS MAY APPLY TO THIS PRODUCT. FOR DETAILS, PLEASE VISIT: HTTP://BELFUSE.COM/STEWART/STEWART_PATENTS/
UNLESS OTHERWISE SPECIFIED TOLERANCES ARE ±.005 [0.13] ANGLES ARE ± 1°	DRN BY: TRM DATE 3-9-11 APPD BY: DHG DATE 3-10-11 DWG NO. CT740197F REV. B1
SHEET NO. 2 OF 2	