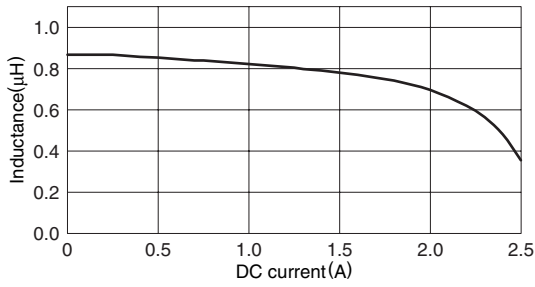
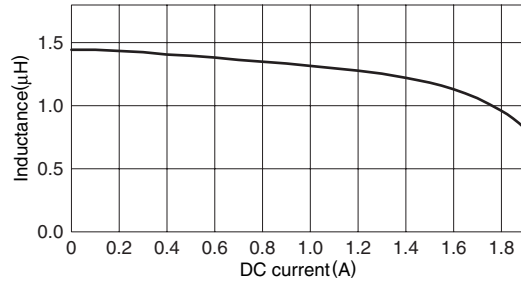


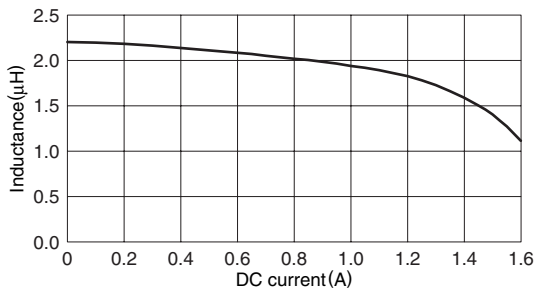
TYPICAL ELECTRICAL CHARACTERISTICS
INDUCTANCE vs. DC SUPERPOSITION CHARACTERISTICS
VLS252010T-1R0N



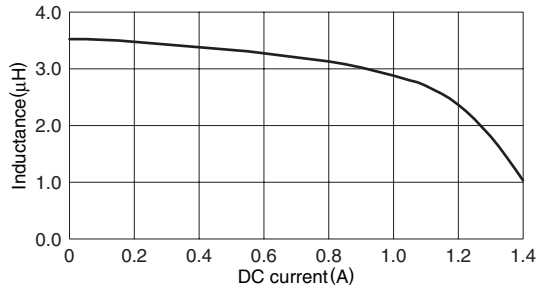
VLS252010T-1R5N



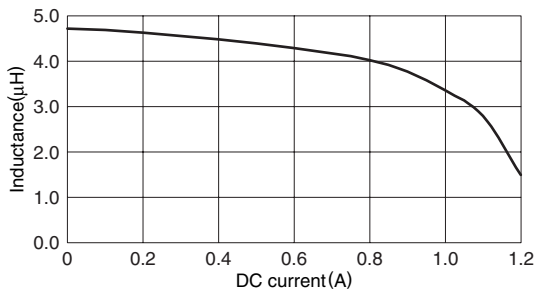
VLS252010T-2R2M



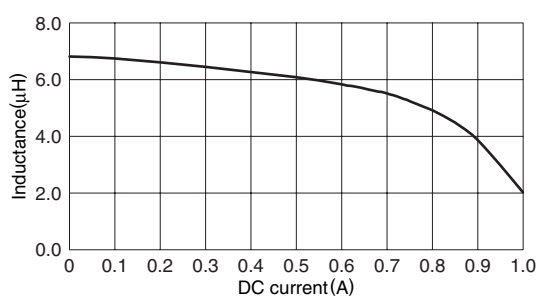
VLS252010T-3R3M



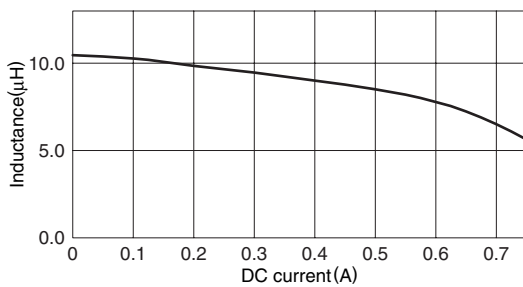
VLS252010T-4R7M



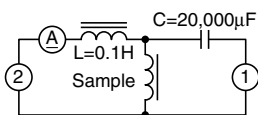
VLS252010T-6R8M



VLS252010T-100M



TEST CIRCUIT



1: LCR meter 4285A $f=1\text{MHz}$
 2: DC constant current