



TECHNICAL INFORMATION

MATERIALS

- Contacts: Copper Alloy
- Contact Finish:
 - Performance-based plating over nickel at separable interface
 - Tin over nickel on press-fit tails on standard lead-free products. Tin-lead option available upon request
- Housings: High Performance Thermoplastic, UL94V-0

ELECTRICAL PERFORMANCES

- Contact Resistance: $\leq 35\text{m}\Omega$ initial, $\leq 10\text{m}\Omega$ increase after environmental test
- Current Rating ($\leq 30^\circ\text{C}$ rise above ambient in still air): 0.5A/contact with all contacts powered

100 Ω CONNECTORS

- Differential impedance: $100 \pm 8\Omega$ @ 50 ps (10-90%) rise time
- Differential insertion loss: $< 1\text{dB}$ through 6.25Gb/s
 $< 1.5\text{ dB}$ through 12.5Gb/s
- Near-end crosstalk (multi-active): $< -38\text{ dB}$ through 6.25Gb/s; $< -28\text{ dB}$ through 12.5Gb/s
- Far-end crosstalk (multi-active): $< -41\text{ dB}$ through 6.25Gb/s; $< -28\text{ dB}$ through 12.5Gb/s

80 Ω CONNECTORS

- Differential impedance: $85 \pm 5\Omega$ @ 50 ps (10-90%) rise time
- Differential insertion loss: $< 1.5\text{ dB}$ through 8Gb/s
- Near-end crosstalk (multi-active): $< -30\text{ dB}$ through 8Gb/s
- Far-end crosstalk (multi-active): $< -30\text{ dB}$ through 8Gb/s

MECHANICAL PERFORMANCE

- Durability: 200 cycles
- Mating Force: 0.45N max./contact
- Unmating Force: 0.15N min./contact
- Compliant pin insertion force:
 - Vertical headers, right-angle headers or right-angle receptacles: 40 N max.
 - Vertical receptacles: 25 N max.

SPECIFICATIONS

- Product: GS-12-239
- Application: GS-20-035

APPROVALS AND CERTIFICATIONS

- Telcordia GR-1217-CORE Central Office

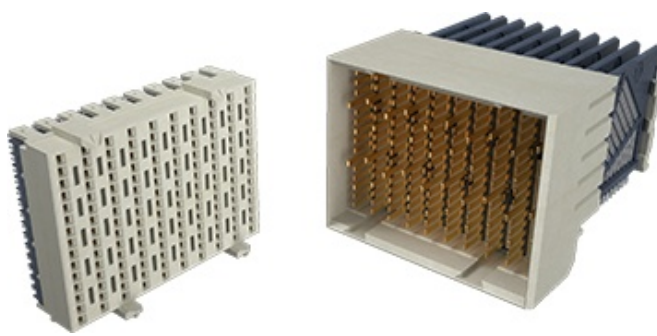
PACKAGING

- Tubes
- Trays (vertical receptacle only)

TARGET MARKETS/APPLICATIONS

- Communications
 - Switches
 - Routers
 - Access
 - Optical Transmission
 - Wireless Base Stations
- Data
 - Servers
 - Switches
 - Storage
- Industrial & Instrumentation
 - Test & Measurement
- Medical

AirMax VS® BACKPLANE/MIDPLANE CONNECTORS



Vertical Receptacle

Right Angle Header (4 Wall)

PART NUMBERS

AirMax VS® SIGNAL MODULES WITH VERTICAL BACKPLANE RECEPTACLES 0.5mm PTH PRESS-FIT*

Product Variation				Mating Connector System			Differential Impedance
Pairs	Columns	Differential Pairs	Column Pitch	Vertical Receptacle	Right Angle Header	Header Version	
3	6	18	2mm	10043546-101LF	10040862-101LF	2 Wall	100 OHMS
	6	18	2mm	10043546-101LF	10039851-101LF	4 Wall	
	8	24	2mm	10045271-101LF	10045266-101LF	2 Wall	
	8	24	2mm	10045271-101LF	10045267-101LF	4 Wall	
	10	30	2mm	10034251-101LF	10034264-101LF	2 Wall	
	10	30	2mm	10034251-101LF	10034249-101LF	4 Wall	
4	6	24	2mm	10052829-101LF	10052825-101LF	4 Wall	
	6	24	2mm	10052829-101LF	10052824-101LF	2 Wall	
	8	32	2mm	10052842-101LF	10052837-101LF	2 Wall	
	8	32	2mm	10052842-101LF	10052838-101LF	4 Wall	
	8	32	3mm	10064493-101LF	10064488-101LF	2 Wall	
	8	32	3mm	10064493-101LF	10064489-101LF	4 Wall	
	10	40	2mm	10028264-101LF	10029391-101LF	2 Wall	
	10	40	2mm	10028264-101LF	10028436-101LF	4 Wall	
	10	40	3mm	10035465-101LF	10035514-101LF	2 Wall	
	10	40	3mm	10035465-101LF	10035515-101LF	4 Wall	
5	8	40	2mm	10040993-101LF	10041746-101LF	2 Wall	
	8	40	2mm	10040993-101LF	10041460-101LF	4 Wall	
	10	50	2mm	10016537-101LF	10016527-101LF	2 Wall	
	10	50	2mm	10016537-101LF	10025613-101LF	4 Wall	
	10	50	3mm	10035146-101LF	10037323-101LF	2 Wall	
	10	50	3mm	10035146-101LF	10037324-101LF	4 Wall	

Product Variation				Mating Connector System			Differential Impedance
Pairs	Columns	Differential Pairs	Column Pitch	Vertical Receptacle	Right Angle Header	Header Version	
3	6	18	2mm	10096461-101LF	10097256-101LF	4 Wall	85 OHMS
5	10	50	2mm	10099763-101LF	10097311-101LF	4 Wall	
	10	50	3mm	10096461-101LF	10087771-101LF	2 Wall	

*0.5mm standard press-fit pin is the same as the standard AirMax VS® connectors

For more information,
please contact: Communications@fci.com
or visit us at www.fci.com

Disclaimer

Please note that the above information is subject to change without notice.

Mouser Electronics

Authorized Distributor

Click to View Pricing, Inventory, Delivery & Lifecycle Information:

FCI / Amphenol:

[10025613-101LF](#) [10039851-101LF](#) [10043546-101LF](#) [10016537-101LF](#) [10045271-101LF](#) [10045267-101LF](#)
[10034249-101LF](#) [10034251-101LF](#) [10053656-101LF](#) [10040993-101LF](#) [10041460-101LF](#) [10037324-101LF](#)
[10035146-101LF](#) [10034475-101LF](#) [10035754-101LF](#) [10037323-101LF](#) [10059957-1071LF](#) [10084612-101LF](#)
[10077323-101LF](#) [10084601-101LF](#) [10035515-101LF](#) [10035465-101LF](#) [10016527-101LF](#) [10034264-101LF](#)
[10040862-101LF](#) [10041746-101LF](#) [10045266-101LF](#) [10056100-1050010LF](#) [10056101-1010011LF](#) [10056101-](#)
[1050010LF](#) [10056101-1050011LF](#) [10052842-101LF](#) [10056335-101LF](#) [10052838-101LF](#) [10056429-1050011LF](#)
[10060905-101LF](#) [10056098-1050011LF](#) [10028264-101LF](#) [10028436-101LF](#) [10045722-101LF](#) [10052824-101LF](#)
[10052825-101LF](#) [10052829-101LF](#) [10052837-101LF](#) [10056427-1050011LF](#) [10084604-111LF](#) [10084600-111LF](#)
[10084605-101LF](#) [10114760-101LF](#) [10114761-101LF](#) [10114633-101LF](#) [10056100-1080011LF](#) [10029391-101LF](#)
[10056100-1050011LF](#) [10035514-101LF](#) [10056103-1050011LF](#) [10058229-101LF](#) [10039851-111LF](#) [10120771-101LF](#)
[10120765-101LF](#) [10125811-102LF](#) [10127116-102LF](#) [10138108-101LF](#) [10138129-104LF](#) [10120764-101LF](#)
[10126796-102LF](#) [10127117-102LF](#) [10130668-102LF](#)