


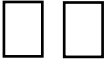
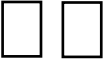
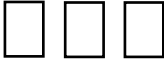
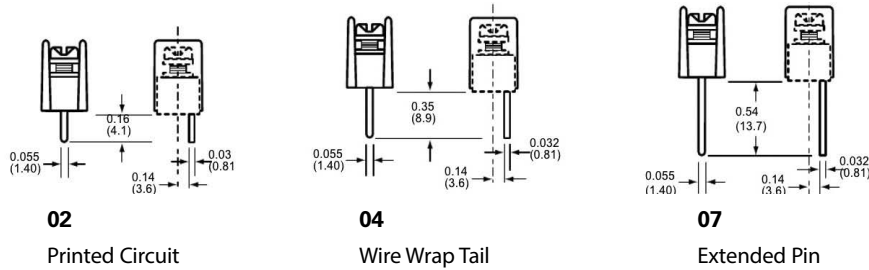


Part Numbering System

Family	Terminal Style	Base/End	Poles	Screw Options	Options
 <p>A1 - standard barrier CB1 - closed back</p>	 <p>02 - printed circuit 04 - wire wrap 07 - extended pin</p>	 <p>1 - mount end 2 - barrier end</p>	 <p>02 to 24 A1 02 to 30 CB1</p>	 <p>Blank-std. screws 03- stainless steel 07- steel SEMS & washer (not available with hardware options)</p>	 <p>DR - angle mts. (A1 only-pg 5) B1 to B9 - 0.187" QC (all positions) L1 to L6 marking options (pg 25) LT1 to LT6 marking options (CB1 only-pg 25) MP & MT - mounting plates 0.150 dia (pg 5) R26 - rightangle bends (A1 only-pg 5)</p>

Terminal Styles Inches (Millimeters)



Screw Options Wire ready screws standard on all terminal styles

(Bulk ordering part numbers are in parentheses)



Standard

Zinc-Plated Steel (F508-J)



03

Stainless Steel (F510-J)



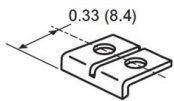
07

Zinc-Plated Steel Screws (F522-J)

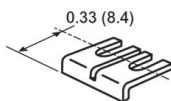
Hardware Options Inches (Millimeters)

(Bulk ordering part numbers are in parentheses)

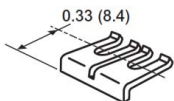
Jumpers



(JA1-xx-J)

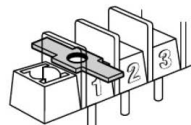


(JB1-xx-J)



(JC1-xx-J)

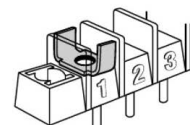
Quick Connects Blade Width B = 0.187"



B1 (1B1-J)**



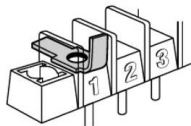
B2 (1B2-J)**



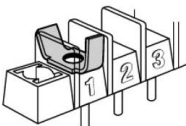
B3 (1B3-J)**



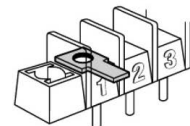
B4 (1B4-J)**



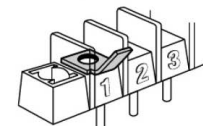
B5 (1B5-J)**



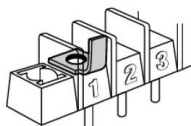
B6 (1B6-J)**



B7 (1B7-J)



B8 (1B8-J)



B9 (1B9-J)

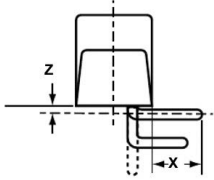
** N/A on CB1

*Contact Eaton for desired configuration

Mounting Options

Right Angle Bends (A1 only)

Right angle terminals are offered on the A1. Configurations are defined in these dimensions: X = pin extension beyond the block base; Z = length from block base to centerline of the terminal tip. Standard bends consist of the X and Z dimensions shown in the chart. Specify by adding the R26 Bend Option Code to the terminal part number.

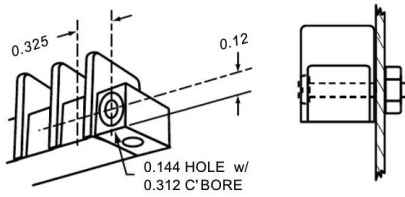


Bend Option Code	X	Z
R26 (04 terminal only)	0.14 (3.5)	0.09 (2.3)

Dimensions: in (mm)

Right Angle Bends (A1 only)

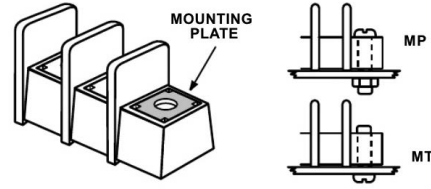
(Dimensions in inches)



Option DR

Counterbored holes across mount ends of block enable fastening with two screws at right angles to normal mount position.

Mounting Plates



Options MP & MT

MP Metal inserts with 0.150" (3.8) dia. hole accept #6 screw.

MT Metal inserts with tapped hole accept #6-32 screw.

Bulk part numbers **1MP-J** & **1MT-J**.

Contact Us

Sales and Customer Service

Americas

Email: elx.americas@eaton.com

Europe, Middle East, Africa

Email: elx.emea@eaton.com

China

Email: elx.cn@eaton.com

Japan

Email: elx.jp@eaton.com

Korea

Email: elx.kr@eaton.com

South East Asia

Email: elx.sea@eaton.com

Taiwan

Email: elx.tw@eaton.com

Global Technical Support

Magnetics: InductorTech@eaton.com

Circuit Protection: FuseTech@eaton.com

Supercapacitors: CapacitorTech@eaton.com

www.eaton.com/terminalblocks

Tools

Eaton's Electronics Product Selection Tools



PARAMETRIC SEARCH

Drill down into the Eaton Electronics product database to find the right part for your application.



IC MATCHING

Find the Eaton Electronics parts called out on IC manufacturers' demo and evaluation boards.



CROSS REFERENCE

Find a cross to a competitor's product or to an alternate Eaton Electronics part number.



SUPERCAPACITOR CALCULATOR

Determine your calculated requirements and design capability.



TERMINAL BLOCK SELECTOR

Find the right terminal block for any application.



AUTOMOTIVE ELECTRONICS SOLUTIONS

Find electronics components for automotive solutions.

tools.eatonelectronics.com

Mouser Electronics

Authorized Distributor

Click to View Pricing, Inventory, Delivery & Lifecycle Information:

Eaton:

[JB1-08/J](#) [A102104](#) [A10220307](#) [A10221007](#) [A102211](#) [A102212](#) [A10221207](#) [A102213](#) [A10221307](#) [A102214](#)
[A102215](#) [A10221507](#) [A102216](#) [A102220](#) [A10222207](#) [A10222407](#) [A102236](#) [A103105](#) [A103106](#) [A103112](#)
[A104102](#) [A10410307R26AB](#) [A104104](#) [A104105](#) [A104106](#) [A10410607R26](#) [A104108](#) [A10411207R26](#)
[A10411407R26AB](#) [A104116](#) [A104118](#) [A104120R26DR](#) [A104203](#) [A10420307R26](#) [A104204](#) [A104205](#) [A104206](#)
[A10420607R26](#) [A104207](#) [A104211](#) [A10421207R26](#) [A104215R26L5](#) [A10421607R26](#) [A10710203](#) [A10710207](#)
[A107103](#) [A10710307](#) [A107104](#) [A10710407MT](#) [A107106](#) [A10711804](#) [A107204](#) [A10720507](#) [A10720707](#) [A107208](#)
[A107210](#) [A10721007](#) [A107212](#) [A107215](#) [A107218](#) [CB10221607](#) [CB10722507](#) [A10410604](#) [A107106DRR26](#)
[A10720607](#) [CB10221907](#) [CB10220607](#) [A10211207](#) [A102210](#) [A10420407](#) [CB10220307](#) [A102205](#) [A104215](#)
[A104103](#) [A104108R26DR](#) [A10420807](#) [A102202](#) [CB10210307EB](#) [CB10221007](#) [A107214](#) [A10421807R26](#)
[CB102203CA](#) [A10210803](#) [A102218](#) [A10420207R26](#) [A103110](#) [A102107](#) [A10712007](#) [CB10221107](#) [A102115](#)
[A102217](#) [CB102204](#) [A10711803](#) [A102232](#) [CB10710307](#) [A10211003](#) [CB10220407EB](#) [A102204](#) [CB10221307](#)
[A102102](#)