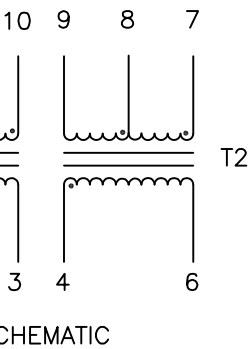
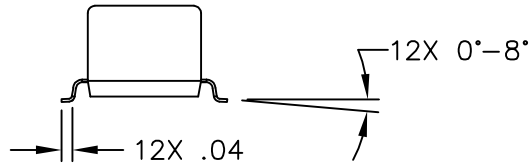
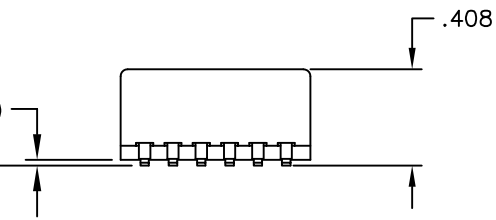
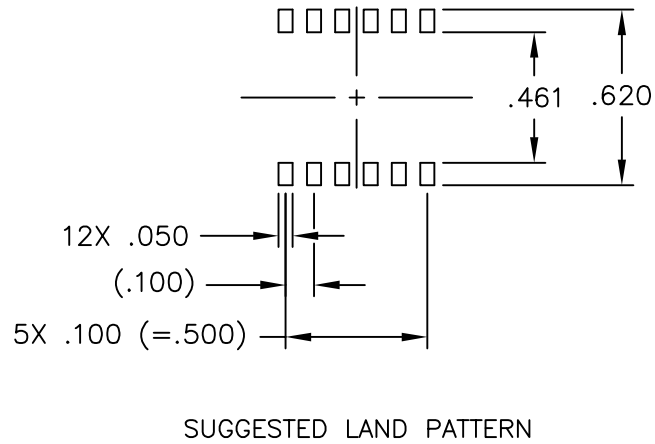
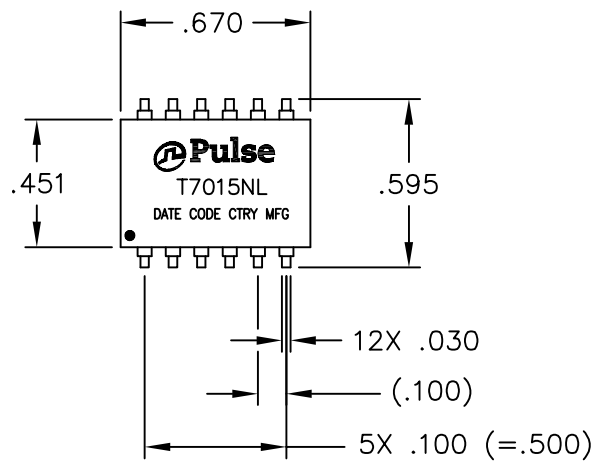


ELECTRICAL CHARACTERISTICS AT +25°C UNLESS OTHER SPECIFIED



PARAMETER	SPECIFICATIONS
OPERATING TEMPERATURE	0°C TO +70 °C
POLARITY	PER SCHEMATIC
URNS RATIO	(1-3):(10-12)=(4-6):(7-9)=1:2 ±2% @ 100mV 20KHz
PRIMARY INDUCTANCE	20mH MIN @ 30KHz, .02V
LEAKAGE INDUCTANCE	5uH MAX @ 30KHz, .02V
CWW	(1-3) TO (10,11,12,) = 130 PF MAX @ 30KHZ .02V (4-6) TO (7,8,9,) = 130 PF MAX @ 30KHZ .02V
DC RESISTANCE	(1-3) = (4-6) = 2.8 OHMS MAX (10-12) = (7-9) = 5.6 OHMS MAX.
HI-POT	1500 VRMS FOR 1 MINUTE.



[DIMENSIONS IN MILLIMETERS] WITH THE FOLLOWING  
DIMENSIONS ARE FOR REFERENCE ONLY.

Pulse Electronics Corp. All rights reserved. Pulse confidential & proprietary. (12/22/15)

TLA DRAWING	PS DRAWING	SHEET	PART NO.	DATASHEET REV.
T7015NL-11	PS-0060.001-C	3 OF 3	T7015NL	A

# Mouser Electronics

Authorized Distributor

Click to View Pricing, Inventory, Delivery & Lifecycle Information:

Pulse:

[PE-65535NL](#) [PE-65540NL](#) [T7015NL](#) [T7015NLT](#)