

Applications

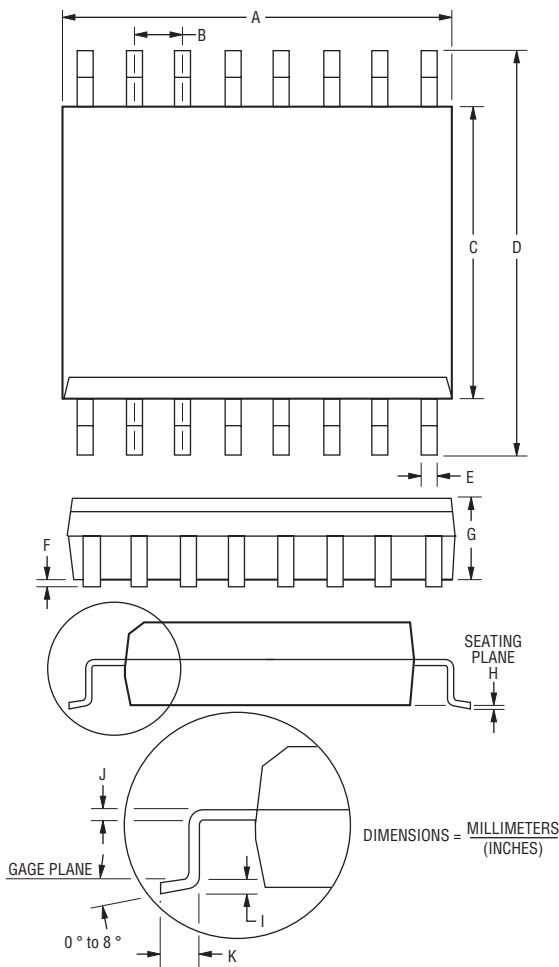
- T1/E1 line cards
- ISDN telecom equipment
- XDSL, USB, SCSI & ethernet interfaces
- Data & bus lines for FCC Part 68 applications

CDWBS16-PLC01-6 TVS Diode Array

BOURNS®

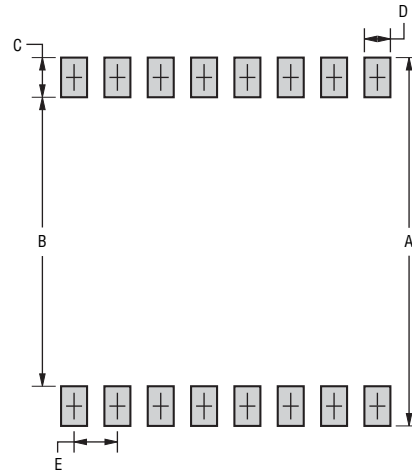
Product Dimensions

This is a molded JEDEC wide body SO-16 package with lead free 100 % Sn plating on the lead frame, weighs approximately 0.15 g and has a flammability rating of UL 94V-0. The dimensions for the packaged device are shown below.



Dimensions			
A	$\frac{10.16 - 10.41}{(0.400 - 0.410)}$	G	$\frac{2.65}{(0.104)}$ Max.
B	$\frac{1.27}{(0.050)}$	H	$\frac{0.10}{(0.004)}$
C	$\frac{7.45 - 7.59}{(0.293 - 0.299)}$	I	$\frac{0.25}{(0.010)}$
D	$\frac{10.15 - 10.65}{(0.400 - 0.419)}$	J	$\frac{0.25}{(0.010)}$ Nom.
E	$\frac{0.35 - 0.51}{(0.014 - 0.020)}$	K	$\frac{0.40 - 1.27}{(0.016 - 0.050)}$
F	$\frac{0.10 - 0.30}{(0.004 - 0.012)}$		

Recommended Footprint



DIMENSIONS = $\frac{\text{MILLIMETERS}}{\text{(INCHES)}}$

Dimensions	
A	$\frac{10.7}{(0.420)}$ Min.
B	$\frac{5.225 \pm 0.127}{(0.325 \pm 0.005)}$
C	$\frac{1.143 \pm 0.127}{(0.045 \pm 0.005)}$
D	$\frac{0.762 \pm 0.127}{(0.045 \pm 0.005)}$
E	$\frac{1.270}{(0.050)}$ Typ.

How To Order

CD WBS16 - PLC01 - 6

Common Code _____
 Chip Diode _____
 Package _____
 • WBS16 = Wide Body SOIC16 Package
 Model _____
 PLC01 = Model Number
 Rated Standoff Voltage _____
 6 = 6 V_{BR} (Volts)

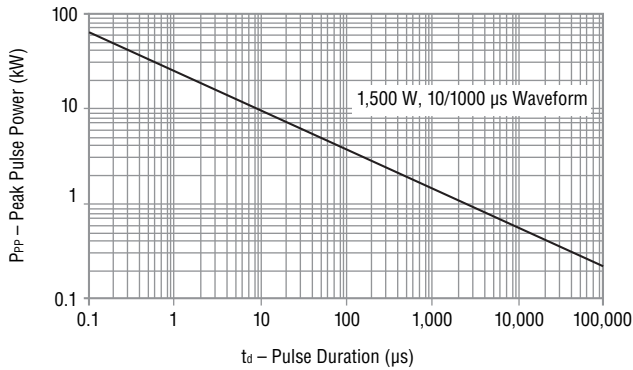
*Specifications are subject to change without notice.
 The device characteristics and parameters in this data sheet can and do vary in different applications and actual device performance may vary over time.
 Users should verify actual device performance in their specific applications.*

CDWBS16-PLC01-6 TVS Diode Array

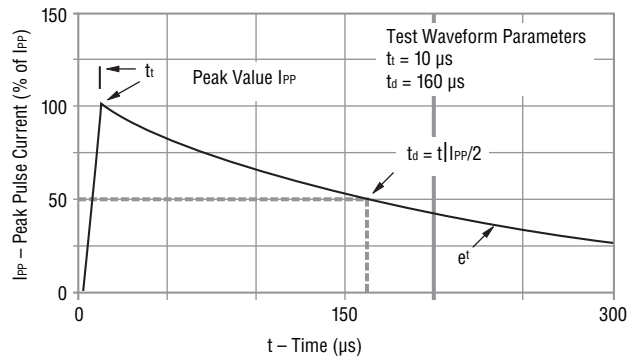


Performance Graphs

Peak Pulse Power vs Pulse Time

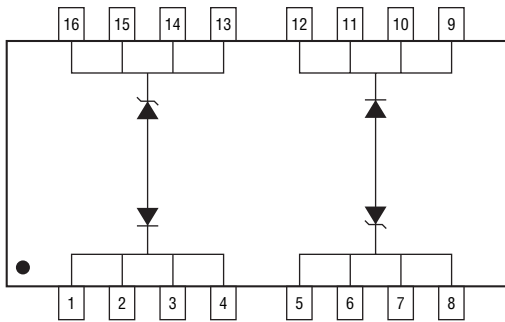


Pulse Wave Form

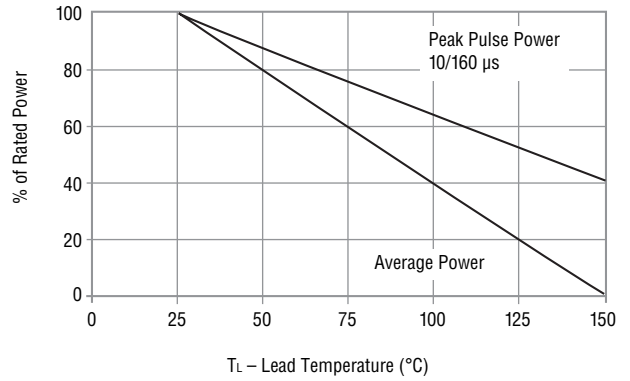


Block Diagram

The device block diagrams below include the pin names and basic electrical connections associated with each channel.



Power Derating Curve



Typical Part Marking

CDWBS16-PLC01-6.....BLC01-6

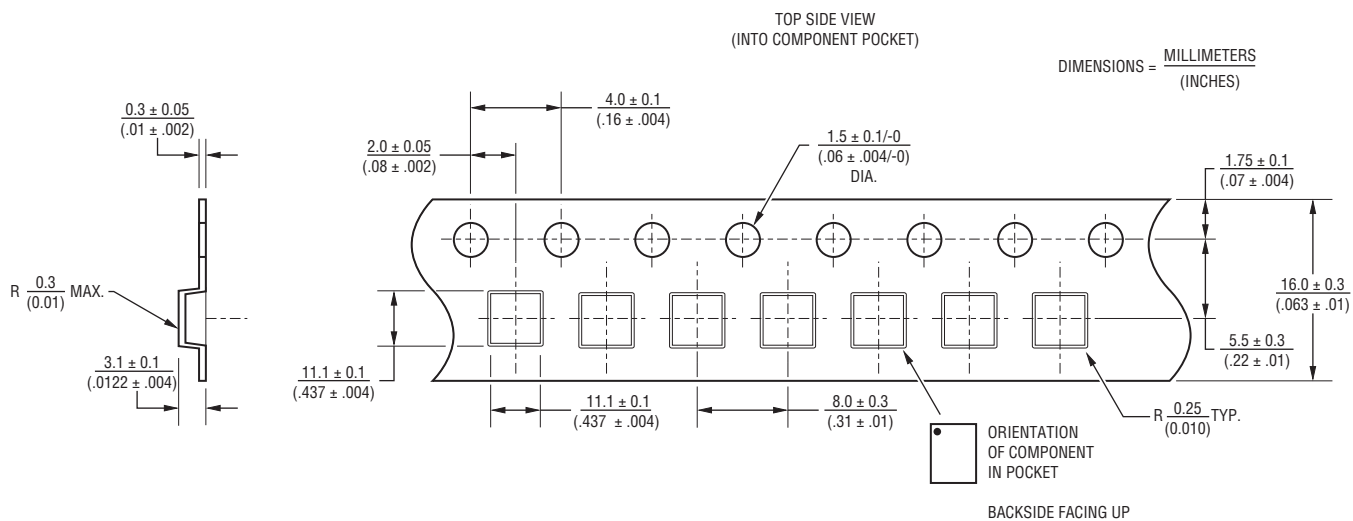
Specifications are subject to change without notice.
 The device characteristics and parameters in this data sheet can and do vary in different applications and actual device performance may vary over time.
 Users should verify actual device performance in their specific applications.

CDWBS16-PLC01-6 TVS Diode Array

BOURNS®

Packaging

The surface mount product is packaged in a 16 mm x 8 mm tape and reel format per EIA-481 standard.



REV. 07/16

*Specifications are subject to change without notice.
The device characteristics and parameters in this data sheet can and do vary in different applications and actual device performance may vary over time.
Users should verify actual device performance in their specific applications.*

Mouser Electronics

Authorized Distributor

Click to View Pricing, Inventory, Delivery & Lifecycle Information:

Bourns:

[CDWBS16-PLC01-6](#)