

General-Purpose CMOS Analog Switches

ABSOLUTE MAXIMUM RATINGS

V+ to V-	44V	Continuous Power Dissipation (T _A = +70°C)	
V+ to V _D	30V	Plastic DIP (derate 10.53mW/°C above +70°C)	842mW
V _D to V-	30V	Wide SO (derate 9.52mW/°C above +70°C)	762mW
V _D to V _S	±22V	CERDIP (derate 10.00mW/°C above +70°C)	800mW
V _L to V-	33V	TO-100 (derate 6.67mW/°C above +70°C)	533mW
V _L to V _{IN}	30V	Operating Temperature Ranges:	
V _L to GND	20V	IH504_C_	0°C to +70°C
V _{IN} to GND	20V	IH504_M_	-55°C to +125°C
Digital Inputs	(V+ + 0.3V) to (V+ - 44V)	Storage Temperature Range	-65°C to +150°C
V _S or V _D (Note 1)	-0.3V to (V+ + 0.3V)	Lead Temperature (soldering, 10sec)	+300°C
Current (any terminal)	30mA		

Note 1: Signals on S, D, and digital inputs that exceed V- or V+ will be clamped by internal diodes. Limit forward diode current to 30mA maximum.

Stresses beyond those listed under "Absolute Maximum Ratings" may cause permanent damage to the device. These are stress ratings only, and functional operation of the device at these or any other conditions beyond those indicated in the operational sections of the specifications is not implied. Exposure to absolute maximum rating conditions for extended periods may affect device reliability.

ELECTRICAL CHARACTERISTICS

(V+ = 15V, V- = -15V, V_L = 5V, T_A = +25°C, unless otherwise noted.)

PARAMETER	SYMBOL	CONDITIONS	IH504_M			IH504_C			UNITS	
			MIN	TYP	MAX	MIN	TYP	MAX		
Input Logic Current	I _{IN(ON)}	V _{IN} = 2.4V	T _A = +25°C	-1		1	-1		1	μA
			T _A = T _{MAX}	-10		10	-10		10	
	I _{IN(OFF)}	V _{IN} = 0.8V	T _A = +25°C	-1		1	-1		1	
			T _A = T _{MAX}	-10		10	-10		10	
Input Logic Low	V _{IL}	T _A = T _{MIN} to T _{MAX}			0.8			0.8	V	
Input Logic High	V _{IH}	T _A = T _{MIN} to T _{MAX}	2.4			2.4			V	
Drain-Source On Resistance	r _{DS(ON)}	I _S = 10mA, V _{ANALOG} = -10V to 10V	T _A = +25°C			75			80	Ω
			T _A = T _{MAX}			150			130	
Channel-to-Channel r _{DS(ON)} Match	Δr _{DS(ON)}			3			5		Ω	
Minimum Analog-Signal Handling Capability	V _{ANALOG}		-15		15	-15		15	V	
Switch-Off Leakage Current	I _D /I _{S(OFF)}	V _{ANALOG} = -10V to 10V	T _A = +25°C	-1		1	-5		5	nA
			T _A = T _{MAX}	-100		100	-100		100	

General-Purpose CMOS Analog Switches

IH5040-IH5045/IH5047

ELECTRICAL CHARACTERISTICS (continued)

(V+ = 15V, V- = -15V, VL = 5V, TA = +25°C, unless otherwise noted.)

PARAMETER	SYMBOL	CONDITIONS	IH504_M			IH504_C			UNITS
			MIN	TYP	MAX	MIN	TYP	MAX	
Switch-On Leakage Current	ID(ON)	VD = VS = -10V to 10V	TA = +25°C	-2	2	-10	10	nA	
			TA = TMAX	-200	200	-100	100		
Switch-On Time	tON	Figure 1		400		400	ns		
Switch-Off Time	tOFF	Figure 1		200		200	ns		
Charge Injection	Q(INJ)	Figure 2 (Note 2)		15		20	mV		
Minimum Off-Isolation Rejection Ratio	OIRR	Figure 3, CL < 5pF		54		50	dB		
V+ Quiescent Current	I+Q	VIN = 0V and 5V	TA = +25°C		1		10	μA	
			TA = TMAX		10		100		
V- Quiescent Current	I-Q	VIN = 0V and 5V	TA = +25°C	-1		-10		μA	
			TA = TMAX	-10		-100			
VL Quiescent Current	ILQ	VIN = 0V and 5V	TA = +25°C		1		10	μA	
			TA = TMAX		10		100		
Ground Quiescent Current	IGND	VIN = 0V and 5V	TA = +25°C	-1		-10		μA	
			TA = TMAX	-10		-100			
Minimum Channel-to-Channel Cross-Coupling Rejection Ratio	CCRR	One channel off (Note 2)		54		50	dB		
Power-Supply Range for Continuous Operation	VOP	(Notes 2, 3)	±4.5		±18	±4.5	±18	V	

Note 2: Not production tested.

Note 3: Electrical characteristics, such as on resistance, will change when power supplies other than ±15V are used.

Test Circuits

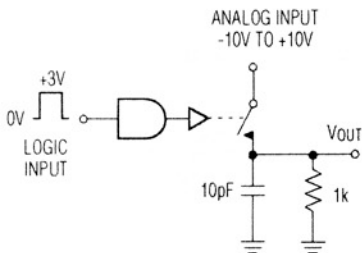


Figure 1. Switching Time

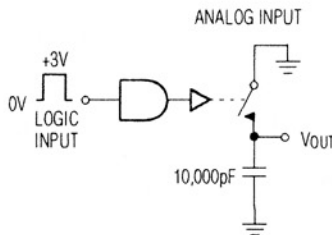


Figure 2. Charge Injection

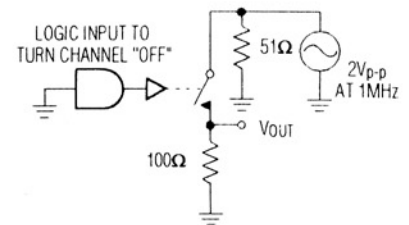


Figure 3. Off-Isolation Rejection Ratio

General-Purpose CMOS Analog Switches

Pin Configurations & Switching-State Diagrams (continued)

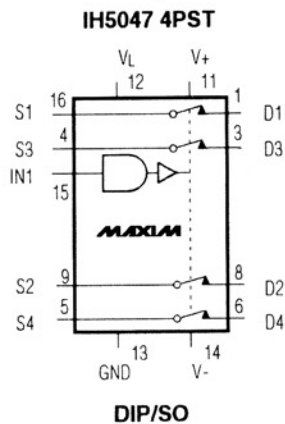
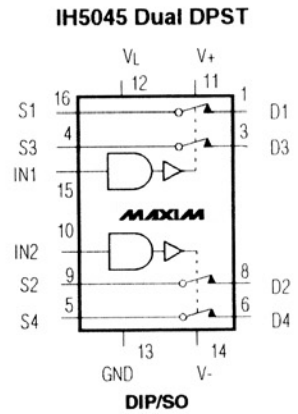
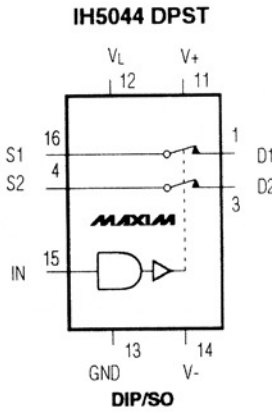
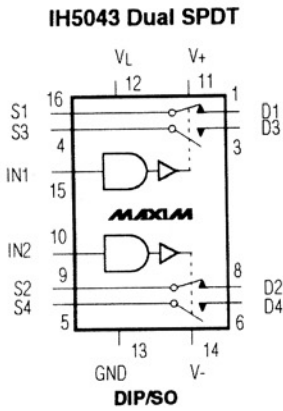
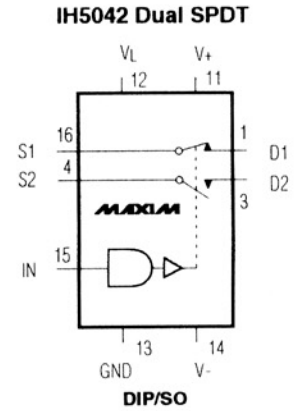
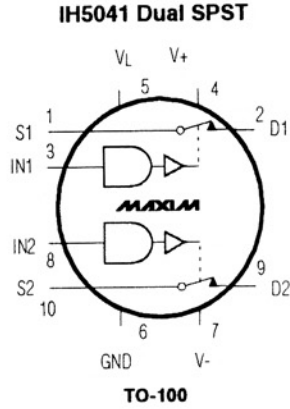
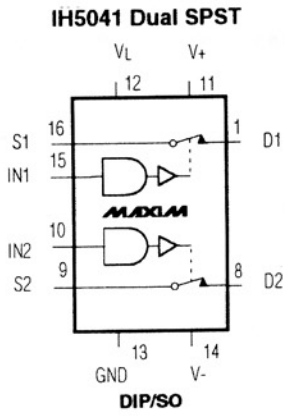
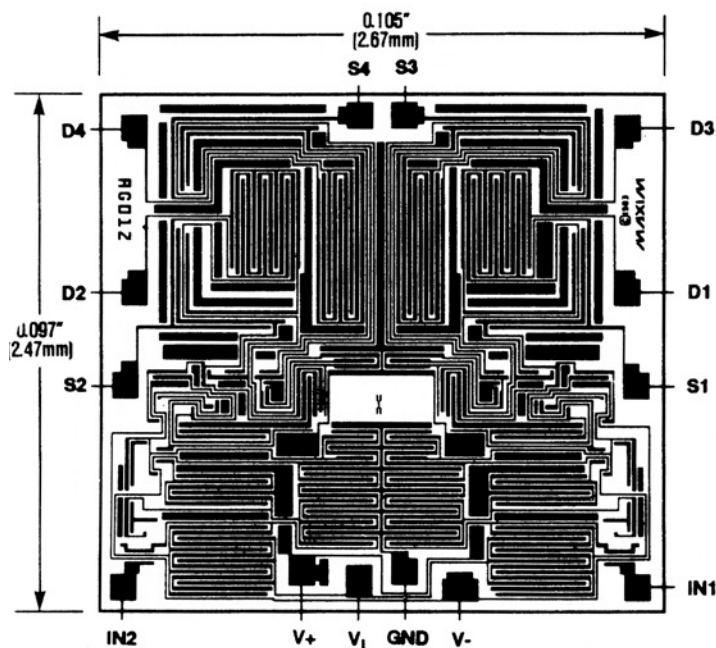


Table 1. Using the IH5040 Family with Only Two Supplies

SUPPLY VOLTAGES (V)	MINIMUM LOGIC I/P FOR "1" STATE (V)
±15	12.6
±12	9.6
±10	7.6
±5	2.6

General-Purpose CMOS Analog Switches

Chip Topography



Ordering Information (continued)

PART	TEMP. RANGE	PIN-PACKAGE
DUAL, SINGLE POLE, SINGLE THROW (DUAL SPST)		
IH5041CPE	0°C to +70°C	16 Plastic DIP
IH5041CWE	0°C to +70°C	16 Wide SO
IH5041CJE	0°C to +70°C	16 CERDIP
IH5041CTW	0°C to +70°C	16 TO-100 [†]
IH5041C/D	0°C to +70°C	Dice*
IH5041MJE	-55°C to +125°C	16 CERDIP**
IH5041MTW	-55°C to +125°C	16 TO-100 [†]
SINGLE POLE, DOUBLE THROW (SPDT)		
IH5042CPE	0°C to +70°C	16 Plastic DIP
IH5042CWE	0°C to +70°C	16 Wide SO
IH5042CJE	0°C to +70°C	16 CERDIP
IH5042C/D	0°C to +70°C	Dice*
IH5042MJE	-55°C to +125°C	16 CERDIP**
DUAL, SINGLE POLE, DOUBLE THROW (DUAL SPDT)		
IH5043CPE	0°C to +70°C	16 Plastic DIP
IH5043CWE	0°C to +70°C	16 Wide SO
IH5043CJE	0°C to +70°C	16 CERDIP
IH5043C/D	0°C to +70°C	Dice*
IH5043MJE	-55°C to +125°C	16 CERDIP**
DOUBLE POLE, SINGLE THROW (DPST)		
IH5044CPE	0°C to +70°C	16 Plastic DIP
IH5044CWE	0°C to +70°C	16 Wide SO
IH5044CJE	0°C to +70°C	16 CERDIP
IH5044C/D	0°C to +70°C	Dice*
IH5044MJE	-55°C to +125°C	16 CERDIP**
DUAL, DOUBLE POLE, SINGLE THROW (DUAL DPST)		
IH5045CPE	0°C to +70°C	16 Plastic DIP
IH5045CWE	0°C to +70°C	16 Wide SO
IH5045CJE	0°C to +70°C	16 CERDIP
IH5045C/D	0°C to +70°C	Dice*
IH5045MJE	-55°C to +125°C	16 CERDIP**
QUAD POLE, SINGLE THROW (4PST)		
IH5047CPE	0°C to +70°C	16 Plastic DIP
IH5047CWE	0°C to +70°C	16 Wide SO
IH5047CJE	0°C to +70°C	16 CERDIP
IH5047C/D	0°C to +70°C	Dice*
IH5047MJE	-55°C to +125°C	16 CERDIP**

* Contact factory for dice specifications.

** Contact factory for availability and processing to MIL-STD-883.

[†] Contact factory for availability.

IH5040-IH5045/IH5047

General-Purpose CMOS Analog Switches

Package Information

(The package drawing(s) in this data sheet may not reflect the most current specifications. For the latest package outline information go to www.maxim-ic.com/packages.)

**Plastic DIP
PLASTIC
DUAL-IN-LINE
PACKAGE
(0.300 in.)**

DIM	INCHES		MILLIMETERS	
	MIN	MAX	MIN	MAX
A	—	0.200	—	5.08
A1	0.015	—	0.38	—
A2	0.125	0.175	3.18	4.45
A3	0.055	0.080	1.40	2.03
B	0.016	0.022	0.41	0.56
B1	0.045	0.065	1.14	1.65
C	0.008	0.012	0.20	0.30
D1	0.005	0.080	0.13	2.03
E	0.300	0.325	7.62	8.26
E1	0.240	0.310	6.10	7.87
e	0.100	—	2.54	—
eA	0.300	—	7.62	—
eB	—	0.400	—	10.16
L	0.115	0.150	2.92	3.81

PKG.	DIM	PINS	INCHES		MILLIMETERS	
			MIN	MAX	MIN	MAX
P	D	8	0.348	0.390	8.84	9.91
P	D	14	0.735	0.765	18.67	19.43
P	D	16	0.745	0.765	18.92	19.43
P	D	18	0.885	0.915	22.48	23.24
P	D	20	1.015	1.045	25.78	26.54
N	D	24	1.14	1.265	28.96	32.13

21-0043A

**Wide SO
SMALL-OUTLINE
PACKAGE
(0.300 in.)**

DIM	INCHES		MILLIMETERS	
	MIN	MAX	MIN	MAX
A	0.093	0.104	2.35	2.65
A1	0.004	0.012	0.10	0.30
B	0.014	0.019	0.35	0.49
C	0.009	0.013	0.23	0.32
E	0.291	0.299	7.40	7.60
e	0.050		1.27	
H	0.394	0.419	10.00	10.65
L	0.016	0.050	0.40	1.27

DIM	PINS	INCHES		MILLIMETERS	
		MIN	MAX	MIN	MAX
D	16	0.398	0.413	10.10	10.50
D	18	0.447	0.463	11.35	11.75
D	20	0.496	0.512	12.60	13.00
D	24	0.598	0.614	15.20	15.60
D	28	0.697	0.713	17.70	18.10

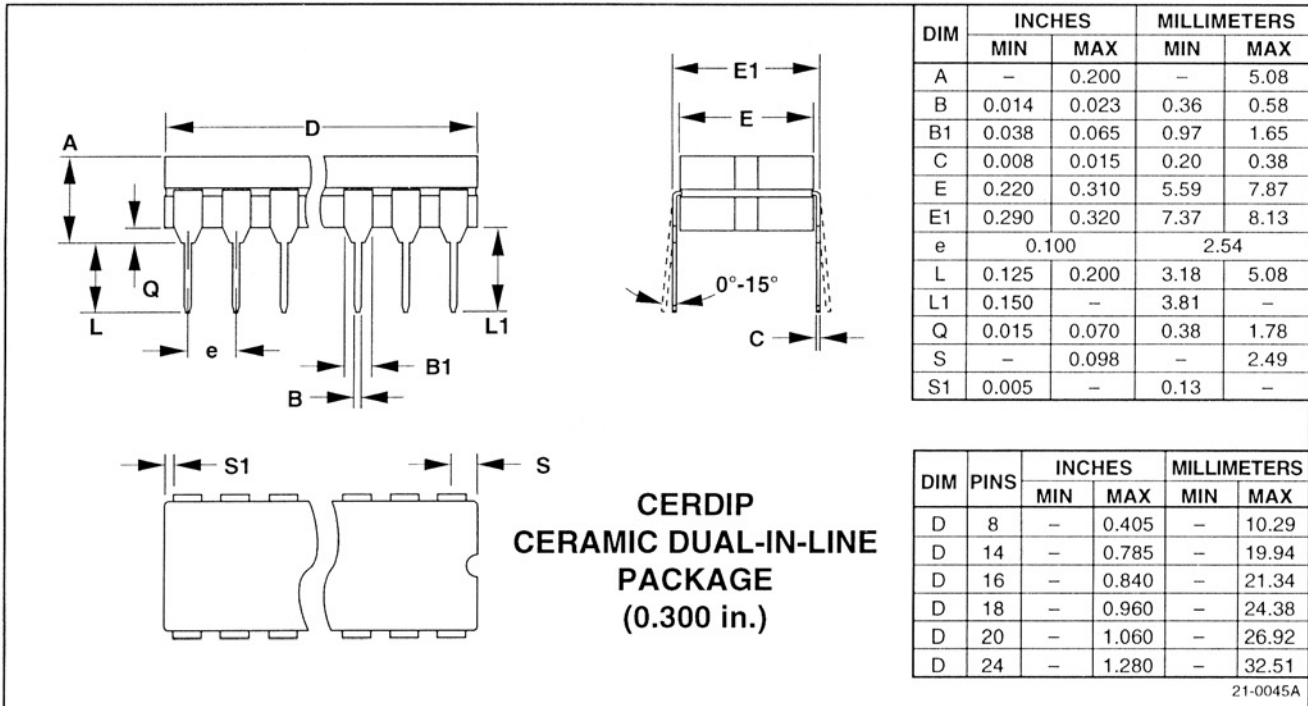
21-0042A

General-Purpose CMOS Analog Switches

Package Information (continued)

(The package drawing(s) in this data sheet may not reflect the most current specifications. For the latest package outline information go to www.maxim-ic.com/packages.)

IH5040-IH5045/IH5047



General-Purpose CMOS Analog Switches

IH5040-IH5045/IH5047

Maxim cannot assume responsibility for use of any circuitry other than circuitry entirely embodied in a Maxim product. No circuit patent licenses are implied. Maxim reserves the right to change the circuitry and specifications without notice at any time.

8 _____ **Maxim Integrated Products, 120 San Gabriel Drive, Sunnyvale, CA 94086 (408) 737-7600**

Mouser Electronics

Authorized Distributor

Click to View Pricing, Inventory, Delivery & Lifecycle Information:

Maxim Integrated:

[IH5042CPE+](#) [IH5043CPE+](#) [IH5040CPE+](#) [IH5040CWE+](#) [IH5040CWE+T](#) [IH5041CPE+](#) [IH5042CPE](#) [IH5042CWE+](#)
[IH5042CWE+T](#) [IH5043CWE+](#) [IH5043CWE+T](#) [IH5040MJE/883B](#) [IH5041CWE](#) [IH5043CWE](#) [5962-9456503MEA](#)
[5962-9456505MEA](#) [IH5047MJE](#) [IH5045MJE/883B](#) [IH5043MJE/883B](#) [IH5045CPE+](#)