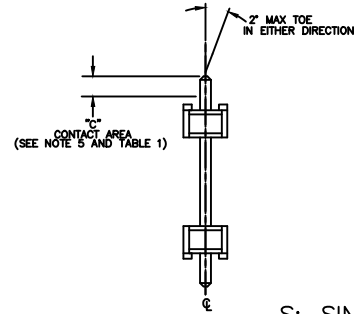
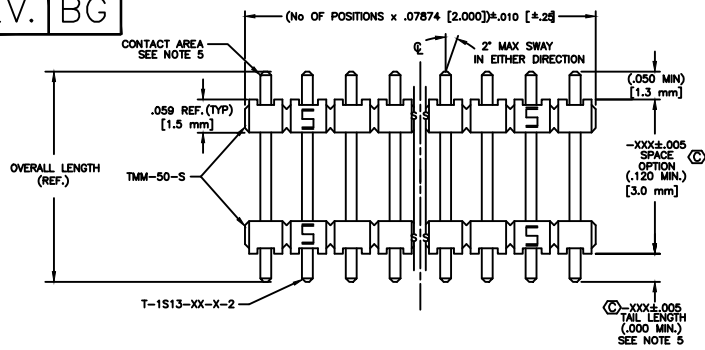


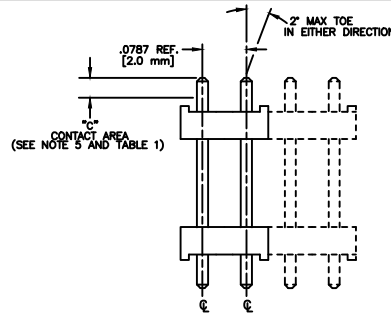
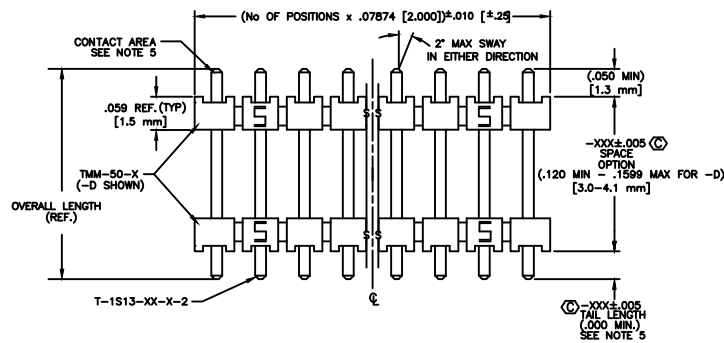
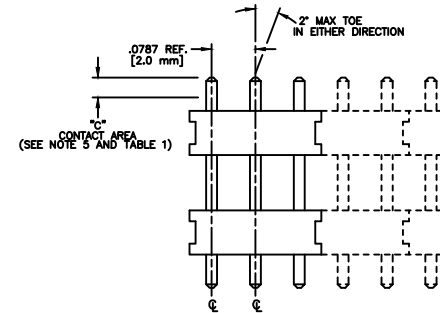
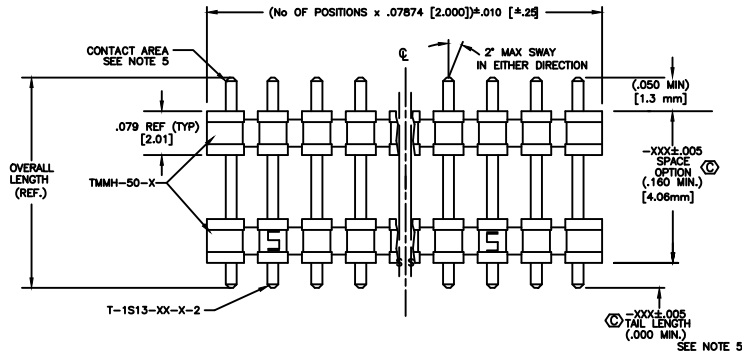
REV. BG

<small>DIMENSIONS ARE IN INCHES UNLESS OTHERWISE NOTED TELEDIMENSIONS ARE:</small> ONE PLACE DECIMALS ±.1(2.54mm) THREE PLACE DECIMALS ±.005(.13mm) TWO PLACE DECIMALS ±.01(.25mm) FOUR PLACE DECIMALS ±.002(.05mm)	<small>TOLERANCES ARE:</small> ANGLES ± 5°	TITLE: HIGH TEMP 2mm TERMINAL STRIP (BOARD STACKING)	DWG NO: TW-XX-XX-X-Y-XXX-XXX-XXX-XX SHEET 2 OF 3
---	---	---	--

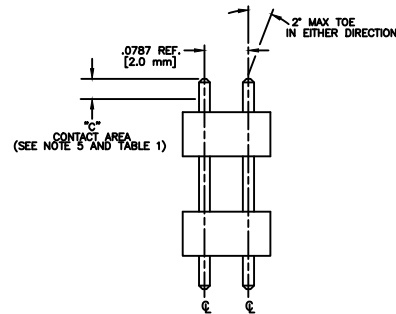
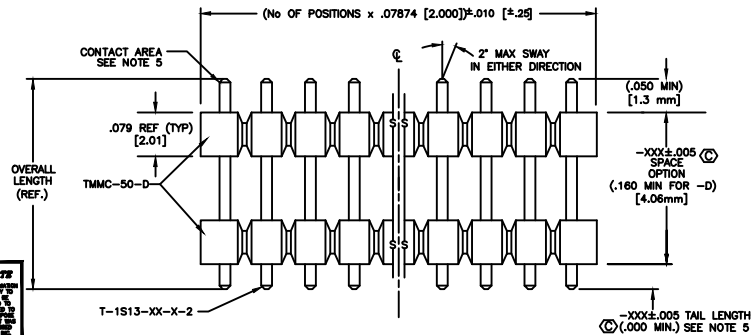


-S: SINGLES

-T: TRIPLE
 -5: FIVE ROW
 -6: SIX ROW



-D: DOUBLE
 -Q: QUAD



-D: DOUBLE

PROPRIETARY NOTE
 THE INFORMATION CONTAINED HEREIN IS THE PROPERTY OF SAMTEC CORPORATION AND IS TO BE USED FOR THE SPECIFIC PURPOSE AND APPLICATION FOR WHICH IT WAS PROVIDED. IT IS NOT TO BE REPRODUCED OR TRANSMITTED IN ANY FORM OR BY ANY MEANS, ELECTRONIC OR MECHANICAL, INCLUDING PHOTOCOPYING, RECORDING, OR BY ANY INFORMATION STORAGE AND RETRIEVAL SYSTEM, WITHOUT PERMISSION IN WRITING FROM SAMTEC CORPORATION.

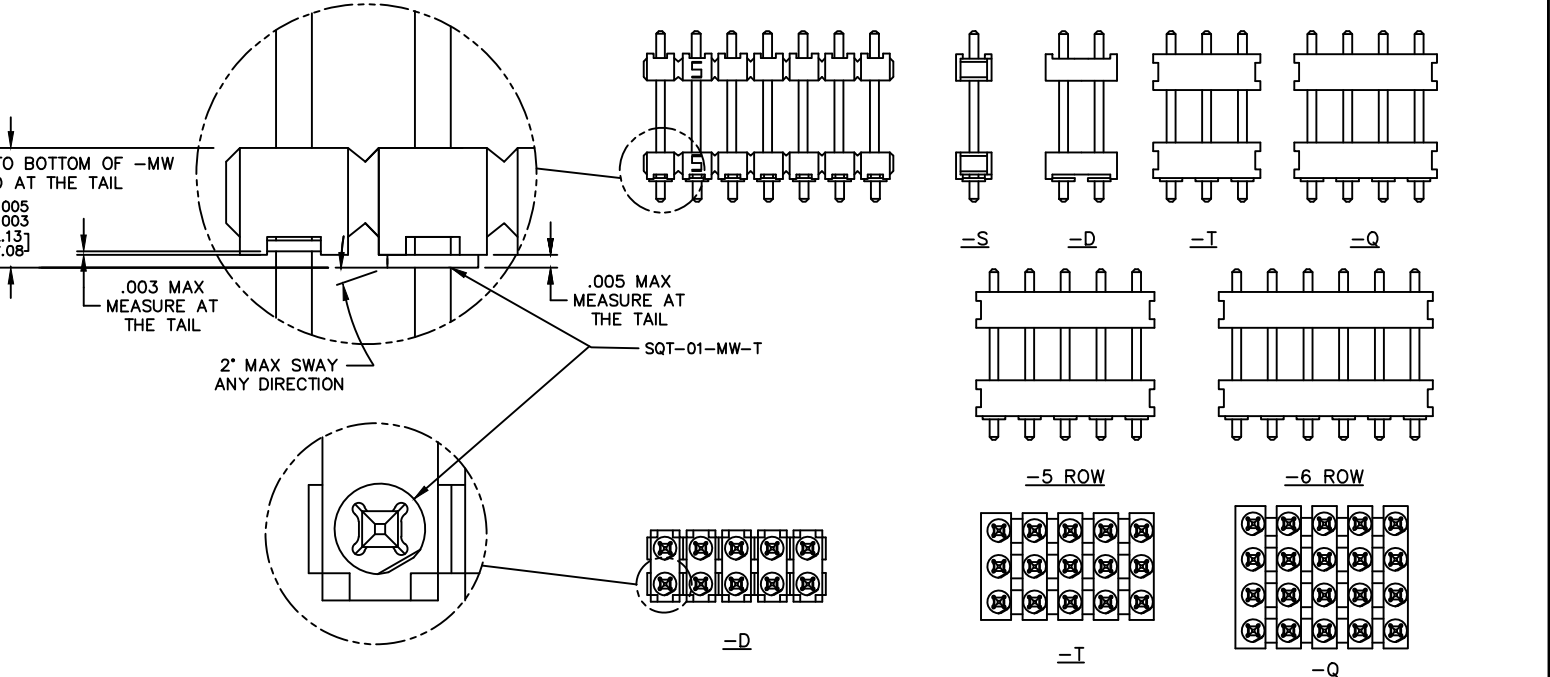
PLOT SCALE 1=11
 EMS-PROD/ASSEMBLY/2MM
samtec
 520 PARK EAST BLVD. NEW ALBANY, INDIANA 47150
 PHONE (812) 944-8733 F.O. BOX 1147
 CODE 55322
 MADE BY: MATT CARTER 6-19-98
 TW-XX-XX-X-Y-XXX-XXX-XXX-XX
 SHEET 2 OF 3

FIG 2
 -MW: METAL WASHER USING TMM BODY
 (ONE PER POSITION)
 (30 POS MAX)

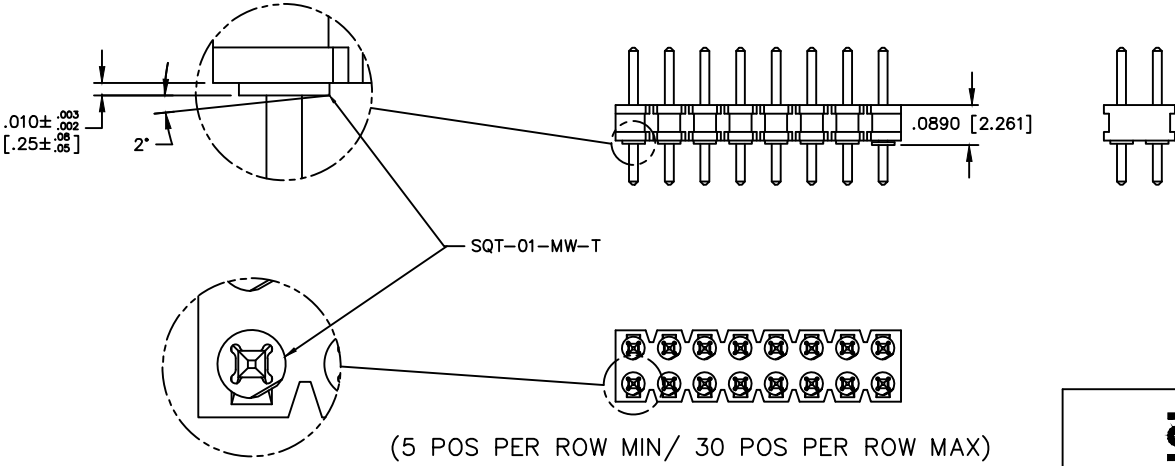
DIMENSIONS ARE IN INCHES		UNLESS OTHERWISE NOTED		TOLERANCES ARE:		ANGLES ± 2°	
ONE PLACE DECIMALS ±.1[2.5]	THREE PLACE DECIMALS ± .005 [.13]						
TWO PLACE DECIMALS ±.01[.25]	FOUR PLACE DECIMALS ±.0020[.05]						

TITLE: 2mm
 TERMINAL STRIP
 ASSEMBLY

DWG NO:
 TW-XX-XX-X-X-XXX-XXX-XXX-XX
 SHEET 3 OF 3



-MW METAL WASHERS USING TMMH OR TMMC BODY



(5 POS PER ROW MIN/ 30 POS PER ROW MAX)

**OPTION, DO NOT DESIGN IN. SAMTEC WILL
 SUPPORT EXISTING BUSINESS 2/07/02.**

EXISPROD\ASSEMBLY\2MM
 TW-ASM3

samtec

520 PARK EAST BLVD. NEW ALBANY, INDIANA 47150
 PHONE (812) 944-6733 P.O. BOX 1147
 CODE 55322

MADE BY:
 REIDINGER 11-2-90

TW-XX-XX-X-X-XXX-XXX-XXX-XX
 SHEET 3 OF 3