

Inductors

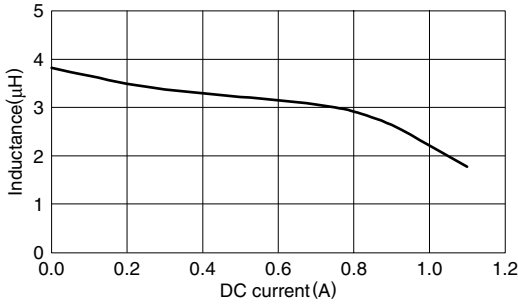
For Power Line SMD

VLF Series VLF3012A Type

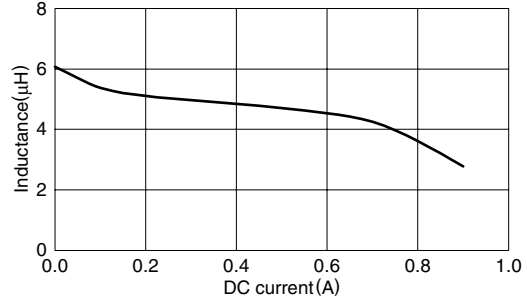
TYPICAL ELECTRICAL CHARACTERISTICS

INDUCTANCE vs. DC SUPERPOSITION CHARACTERISTICS

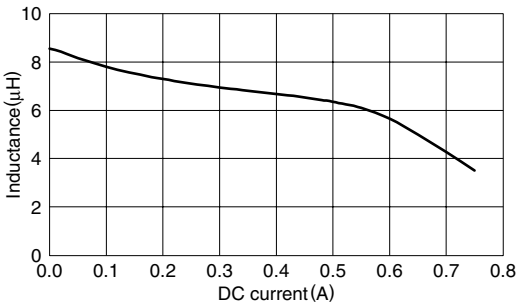
VLF3012AT-3R3MR87



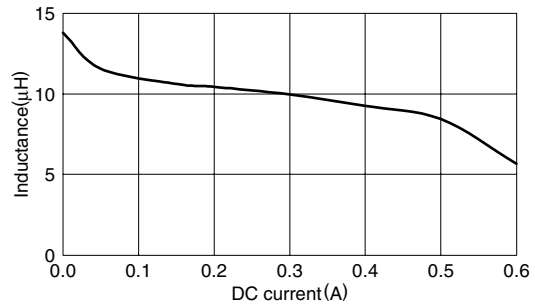
VLF3012AT-4R7MR74



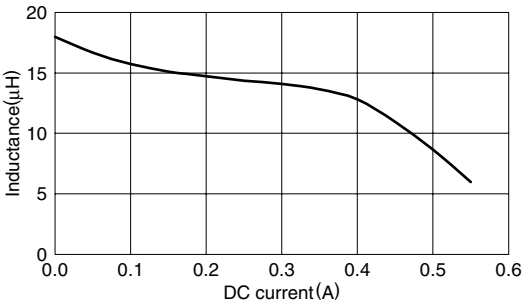
VLF3012AT-6R8MR59



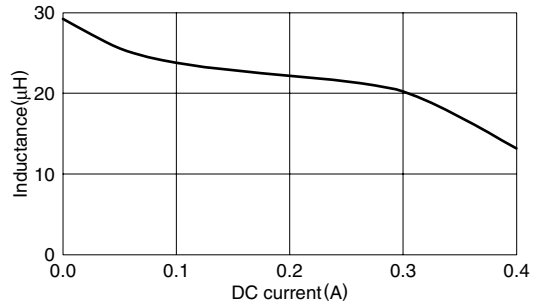
VLF3012AT-100MR49



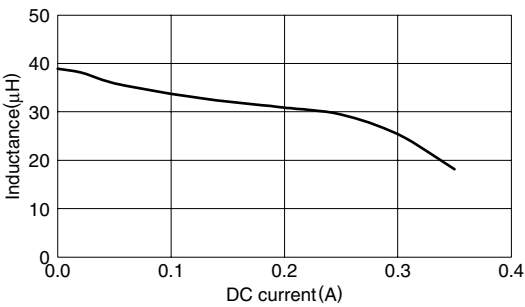
VLF3012AT-150MR41



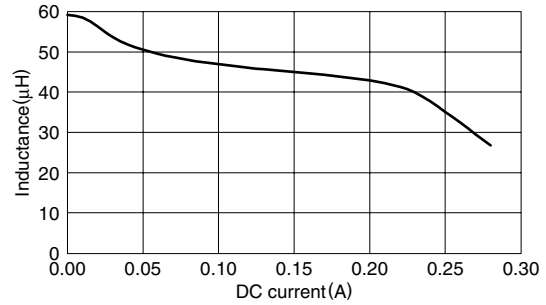
VLF3012AT-220MR33



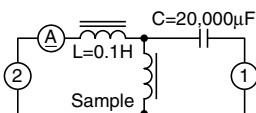
VLF3012AT-330MR27



VLF3012AT-470MR22



TEST CIRCUIT



1: LCR meter 4285A=100kHz
2: DC constant current

• All specifications are subject to change without notice.