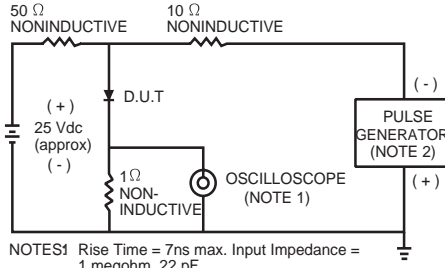


RATING AND CHARACTERISTIC CURVES (FR151G THRU FR157G)

FIG. 1 - TEST CIRCUIT DIAGRAM AND REVERSE RECOVERY TIME CHARACTERISTIC



NOTES: 1. Rise Time = 7ns max. Input Impedance = 1 megohm, 22 pF.
2. Rise Time = 10ns max. Source Impedance = 50 ohms.

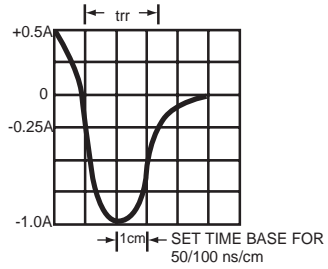


FIG. 2 - TYPICAL FORWARD CURRENT DERATING CURVE

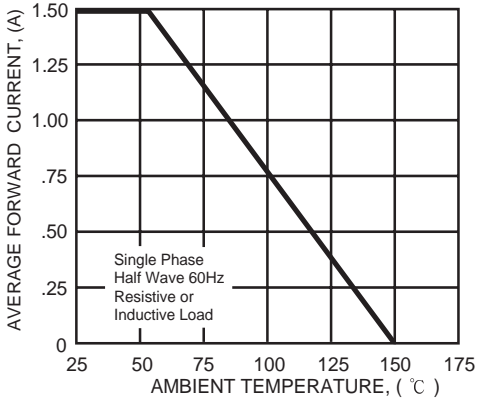


FIG. 3 - TYPICAL INSTANTANEOUS FORWARD CHARACTERISTICS

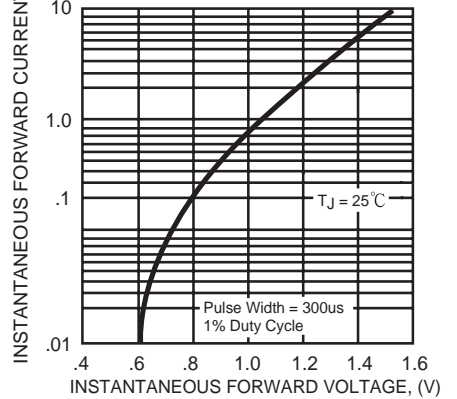


FIG. 4 - TYPICAL JUNCTION CAPACITANCE

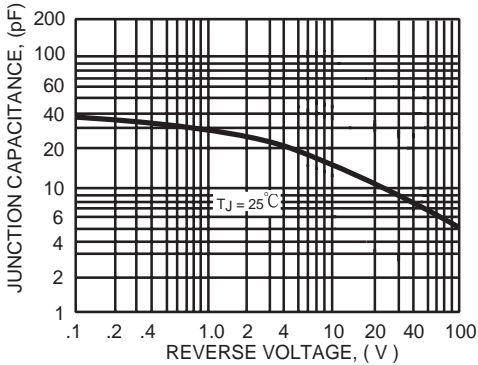
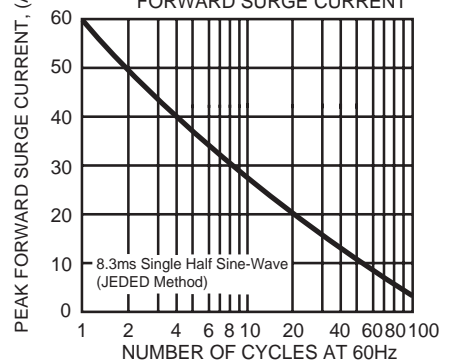


FIG. 5 - MAXIMUM NON-REPETITIVE FORWARD SURGE CURRENT



Mouser Electronics

Authorized Distributor

Click to View Pricing, Inventory, Delivery & Lifecycle Information:

Rectron:

[FR155P-B](#) [FR155P-T](#) [FR153-T](#) [FR153-B](#) [FR157-T](#) [FR154G-B](#) [FR154G-T](#) [FR152G-B](#) [FR152G-T](#) [FR156G-B](#)
[FR156G-T](#) [FR154-T](#) [FR155-B](#) [FR157-B](#) [FR156-B](#) [FR154-B](#) [FR155G-B](#) [FR155G-T](#) [FR157G-T](#) [FR157G-B](#)
[FR157P-T](#) [FR157P-B](#) [FR153G-B](#) [FR153G-T](#) [FR151G-B](#) [FR151G-T](#) [FR151G](#) [FR152G](#) [FR153G](#) [FR154G](#) [FR155G](#)
[FR156G](#) [FR157G](#)