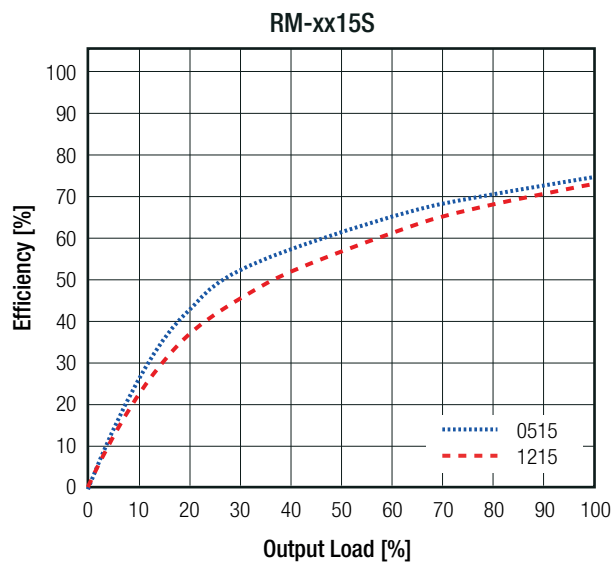
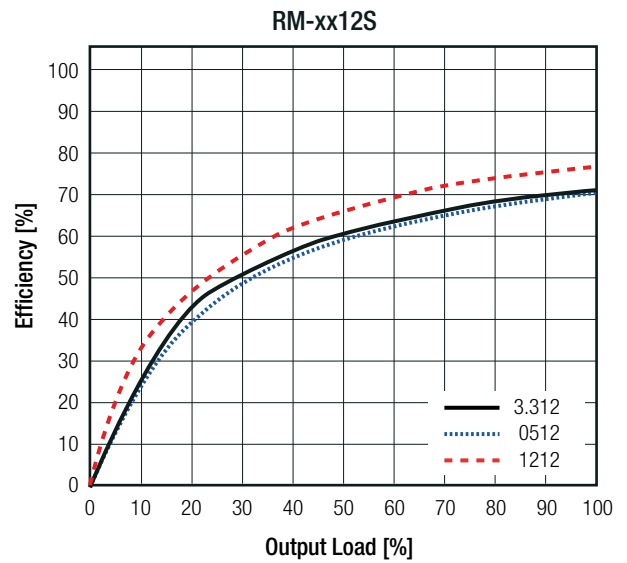
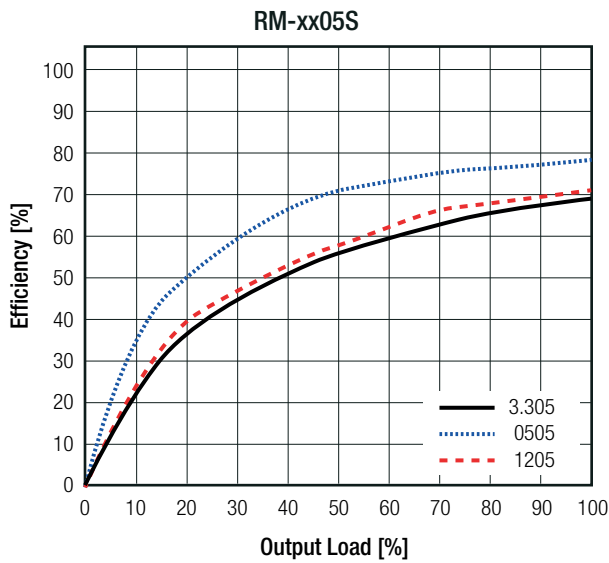


Specifications (measured @ Ta= 25°C, nom. Vin, full load and after warm up unless otherwise stated)

BASIC CHARACTERISTICS

Parameter	Condition	Min.	Typ.	Max.
Input Voltage Range			±10%	
Minimum Load		0%		
Internal Operating Frequency		50kHz	90kHz	105kHz
Output Ripple and Noise	20MHz BW			50mVp-p

Efficiency vs. Load



REGULATIONS

Parameter	Condition	Value
Output Accuracy		±5.0% max.
Line Regulation	low line to high line	±1.2% of 1.0% Vin typ.

continued on next page

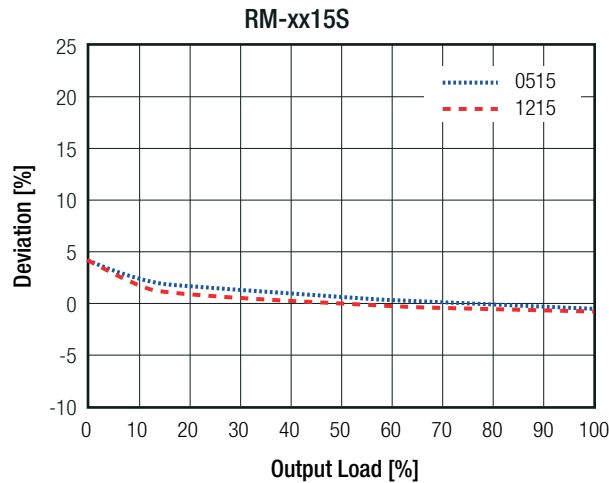
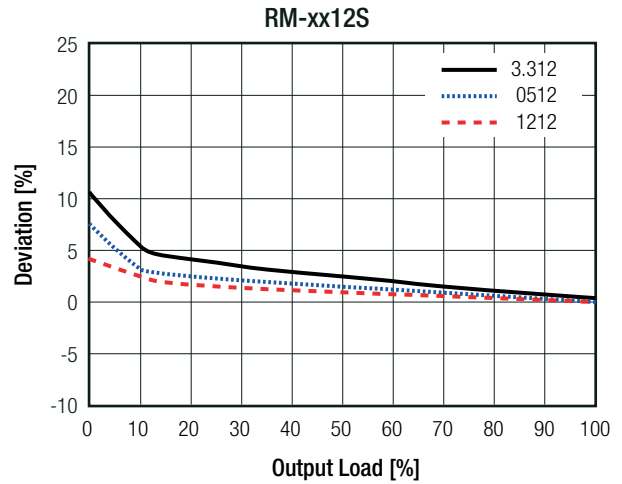
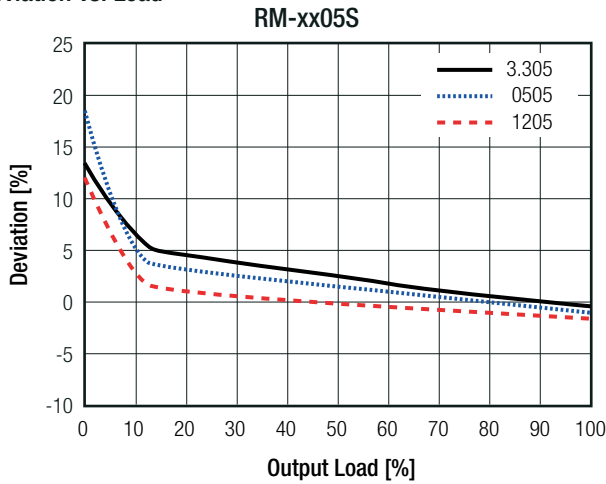
Specifications (measured @ Ta= 25°C, nom. Vin, full load and after warm up unless otherwise stated)

Parameter	Condition		Value
Load Regulation ⁽⁵⁾	10% to 100% load	3.3Vout	20.0% max.
		5Vout	15.0% max.
		12, 15, 24Vout	10.0% max.

Notes:

Note5: Operation below 10% load will not harm the converter, but specifications may not be met

Deviation vs. Load



PROTECTIONS

Parameter	Type		Value
Short Circuit Protection (SCP)	without suffix		1 second
	with suffix "/P"		continuous
Isolation Voltage ⁽⁶⁾	I/P to O/P	without suffix	1kVDC 500VAC/60Hz
		with suffix "/H"	2kVDC 1.4kVAC/60Hz
Isolation Resistance			10GΩ min.
Isolation Capacitance			25pF min. / 82pF max.
Insulation Grade			basic

Notes:

Note6: For repeat Hi-Pot testing, reduce the time and/or the test voltage

Note7: Refer to local wiring regulations if input over-current protection is also required. Recommended fuse: T0.5A slow blow type

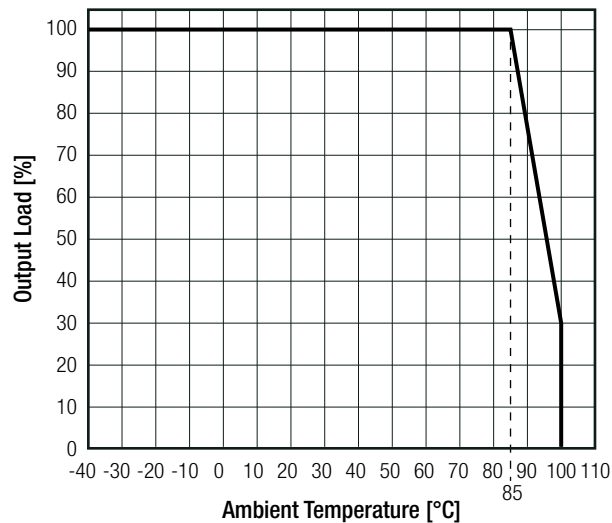
Specifications (measured @ $T_a = 25^\circ\text{C}$, nom. V_{in} , full load and after warm up unless otherwise stated)

ENVIRONMENTAL

Parameter	Condition		Value
Operating Temperature Range	full load @ free air convection (see graph)		-40°C to $+85^\circ\text{C}$
Operating Altitude			2000m
Operating Humidity	non-condensing		95% RH max.
Pollution Degree			PD2
MTBF	according to MIL-HDBK-217F, G.B.	$+25^\circ\text{C}$	1327×10^3 hours
		$+85^\circ\text{C}$	302×10^3 hours

Derating Graph

(@ free air convection)

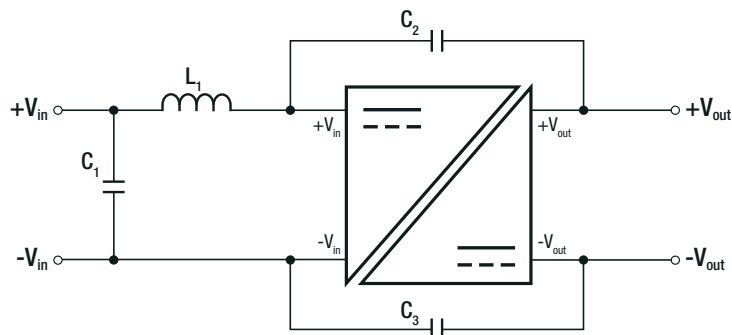


SAFETY AND CERTIFICATIONS

Certificate Type (Safety)	Report / File Number	Standard
Information Technology Equipment, General Requirements for Safety	SPCLVD1602031	IEC60950-1:2005, 2nd Edition + A2:2013 EN60950-1:2006 + A2:2013
Information Technology Equipment, General Requirements for Safety	E358085-A4-UL	UL60950-1, 2nd Edition:2007 CAN/CSA C22.2 No. 60950-1-03, 2nd Edition:2007
EAC	RU-AT.49.09571	TP TC 004/2011
RoHS 2+		RoHS-2011/65/EU + AM-2015/863

EMC Compliance	Condition	Standard / Criterion
Electromagnetic compatibility of multimedia equipment - Emission requirements	with external filter (see filter suggestion below)	EN55032, Class B EN55032, Class A

EMC Filter Suggestion according to EN55032



continued on next page

Specifications (measured @ Ta= 25°C, nom. Vin, full load and after warm up unless otherwise stated)

Component List Class A					Component List Class B				
MODEL	C1	L1	C2 (safety)	C3 (safety)	MODEL	C1	L1	C2 (safety)	C3 (safety)
RM-0505S	10µF 100V MLCC	N/A	N/A	N/A	RM-0505S	10µF 100V MLCC	22µH choke RLS-226	1nF	2.2nF
RM-1205S				2.2nF	RM-1205S				
RM-2405S				N/A	RM-2405S				

Notes:
 Note8: Filter suggestions are valid for indicated part numbers only. For other part numbers, please contact RECOM tech support for advice

DIMENSION AND PHYSICAL CHARACTERISTICS		
Parameter	Type	Value
Material	case potting PCB	non-conductive black plastic (UL94 V-0) epoxy, (UL94 V-0) FR4, (UL94 V-0)
Dimension (LxWxH)		11.5 x 6.0 x 10.0mm
Weight		1.4g typ.

Dimension Drawing (mm)

embossed logo

Marking

Recommended Footprint Details

Pin #	Single
1	-Vin
2	+Vin
3	-Vout
4	+Vout

Tolerance:
 xx.x= ±0.5mm
 xx.xx= ±0.25mm

PACKAGING INFORMATION		
Parameter	Type	Value
Packaging Dimension (LxWxH)	tube	520.0 x 16.0 x 9.0mm
Packaging Quantity	tube	42pcs
Storage Temperature Range		-55°C to +125°C
Storage Humidity	non-condensing	95% RH max.

The product information and specifications may be subject to changes even without prior written notice. The product has been designed for various applications; its suitability lies in the responsibility of each customer. The products are not authorized for use in safety-critical applications without RECOM's explicit written consent. A safety-critical application is an application where a failure may reasonably be expected to endanger or cause loss of life, inflict bodily harm or damage property. The applicant shall indemnify and hold harmless RECOM, its affiliated companies and its representatives against any damage claims in connection with the unauthorized use of RECOM products in such safety-critical applications.

Mouser Electronics

Authorized Distributor

Click to View Pricing, Inventory, Delivery & Lifecycle Information:

RECOM:

[RM-0505S/H](#) [RM-0505S/HP](#) [RM-0505S/P](#) [RM-0509S](#) [RM-0509S/H](#) [RM-0509S/HP](#) [RM-0509S/P](#) [RM-0512S](#) [RM-0512S/H](#) [RM-0512S/HP](#) [RM-0512S/P](#) [RM-0515S](#) [RM-0515S/H](#) [RM-0515S/HP](#) [RM-0515S/P](#) [RM-053.3S](#) [RM-053.3S/H](#) [RM-053.3S/HP](#) [RM-053.3S/P](#) [RM-1205S](#) [RM-1205S/H](#) [RM-1205S/HP](#) [RM-1205S/P](#) [RM-1209S](#) [RM-1209S/H](#) [RM-1209S/HP](#) [RM-1209S/P](#) [RM-1212S](#) [RM-1212S/H](#) [RM-1212S/HP](#) [RM-1212S/P](#) [RM-1215S](#) [RM-1215S/H](#) [RM-1215S/HP](#) [RM-1215S/P](#) [RM-123.3S](#) [RM-123.3S/H](#) [RM-123.3S/HP](#) [RM-123.3S/P](#) [RM-1505S](#) [RM-1505S/H](#) [RM-1505S/HP](#) [RM-1505S/P](#) [RM-1509S](#) [RM-1509S/H](#) [RM-1509S/HP](#) [RM-1509S/P](#) [RM-1512S](#) [RM-1512S/H](#) [RM-1512S/HP](#) [RM-1512S/P](#) [RM-1515S](#) [RM-1515S/H](#) [RM-1515S/HP](#) [RM-1515S/P](#) [RM-153.3S](#) [RM-153.3S/H](#) [RM-153.3S/HP](#) [RM-153.3S/P](#) [RM-2405S](#) [RM-2405S/H](#) [RM-2405S/HP](#) [RM-2405S/P](#) [RM-2409S](#) [RM-2409S/H](#) [RM-2409S/HP](#) [RM-2409S/P](#) [RM-2412S](#) [RM-2412S/H](#) [RM-2412S/HP](#) [RM-2412S/P](#) [RM-2415S](#) [RM-2415S/H](#) [RM-2415S/HP](#) [RM-2415S/P](#) [RM-243.3S](#) [RM-243.3S/H](#) [RM-243.3S/HP](#) [RM-243.3S/P](#) [RM-3.305S](#) [RM-3.305S/H](#) [RM-3.305S/HP](#) [RM-3.305S/P](#) [RM-3.309S](#) [RM-3.309S/H](#) [RM-3.309S/HP](#) [RM-3.309S/P](#) [RM-3.312S](#) [RM-3.312S/H](#) [RM-3.312S/HP](#) [RM-3.312S/P](#) [RM-3.315S](#) [RM-3.315S/H](#) [RM-3.315S/HP](#) [RM-3.315S/P](#) [RM-3.33.3S](#) [RM-3.33.3S/H](#) [RM-3.33.3S/HP](#) [RM-3.33.3S/P](#) [RM-0505S](#)