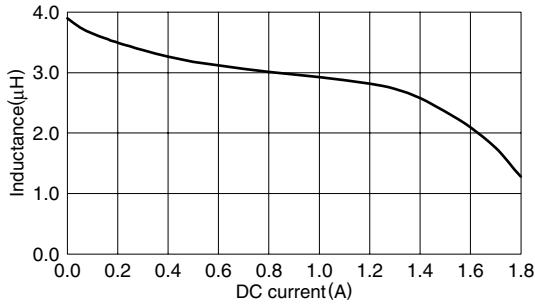
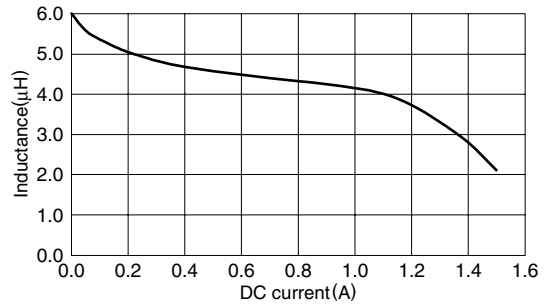


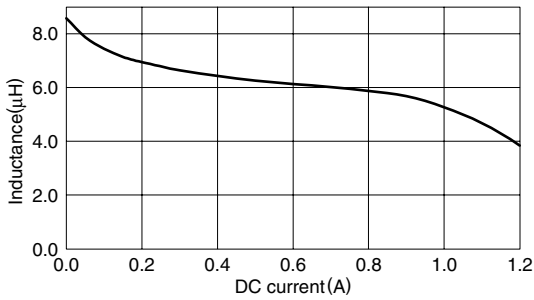
**TYPICAL ELECTRICAL CHARACTERISTICS**  
**INDUCTANCE vs. DC SUPERPOSITION CHARACTERISTICS**  
**VLF4012AT-3R3M1R3**



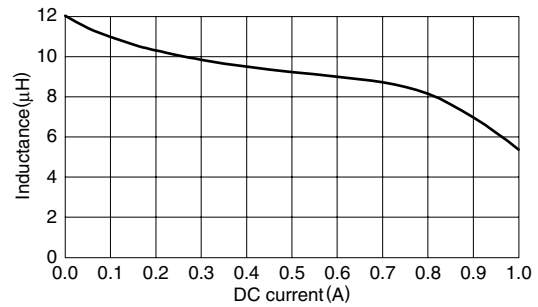
**VLF4012AT-4R7M1R1**



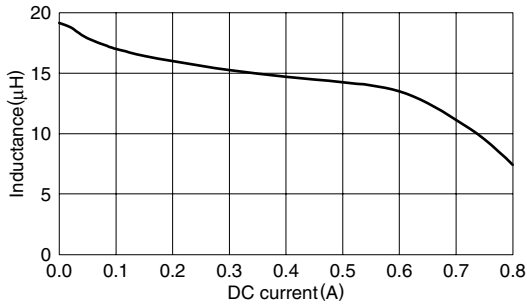
**VLF4012AT-6R8MR96**



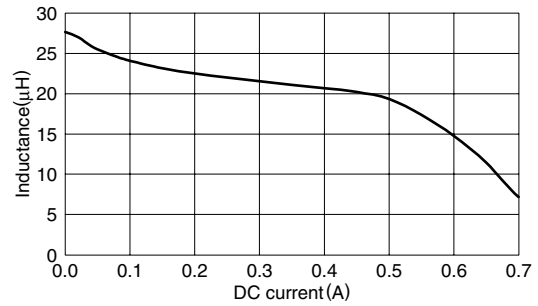
**VLF4012AT-100MR79**



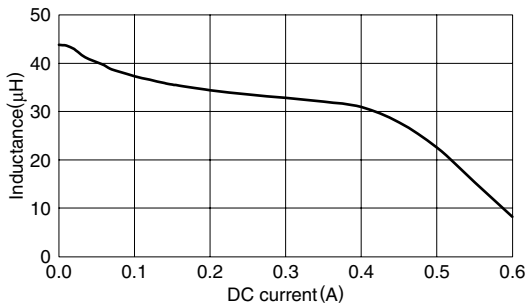
**VLF4012AT-150MR63**



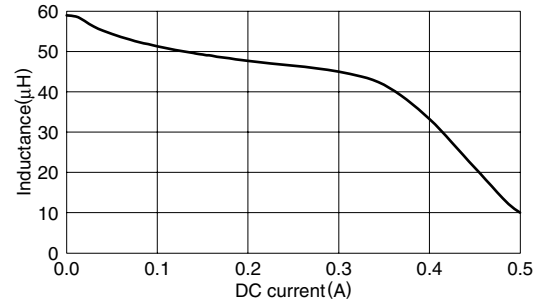
**VLF4012AT-220MR51**



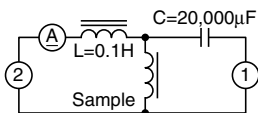
**VLF4012AT-330MR39**



**VLF4012AT-470MR30**



**TEST CIRCUIT**



- 1: LCR meter 4285A=100kHz
- 2: DC constant current