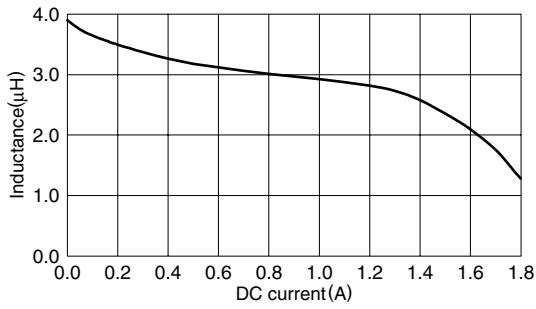
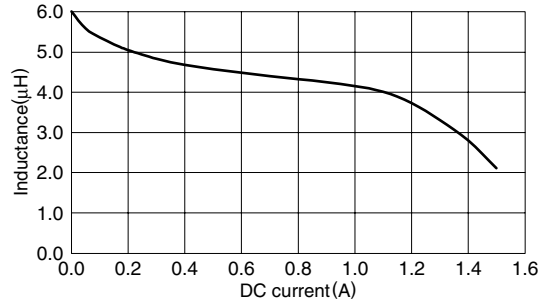


TYPICAL ELECTRICAL CHARACTERISTICS
INDUCTANCE vs. DC SUPERPOSITION CHARACTERISTICS

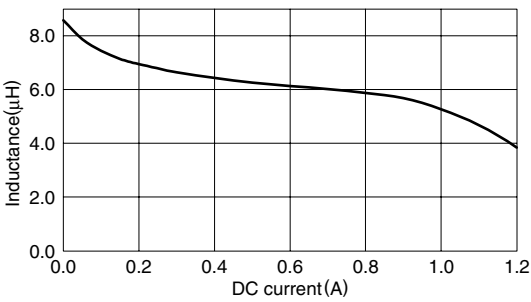
VLF4012AT-3R3M1R3



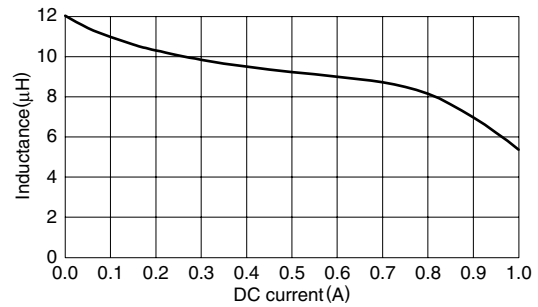
VLF4012AT-4R7M1R1



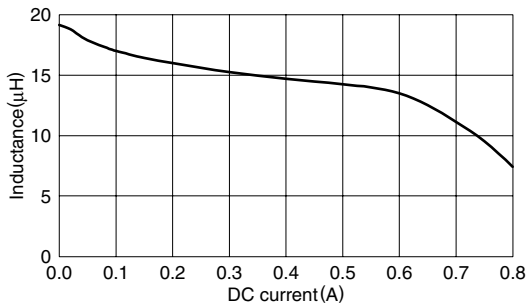
VLF4012AT-6R8MR96



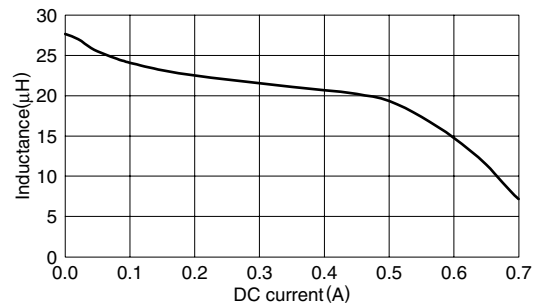
VLF4012AT-100MR79



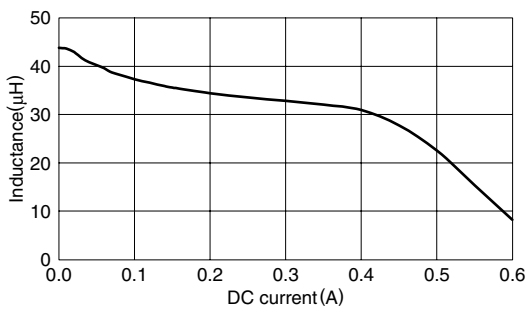
VLF4012AT-150MR63



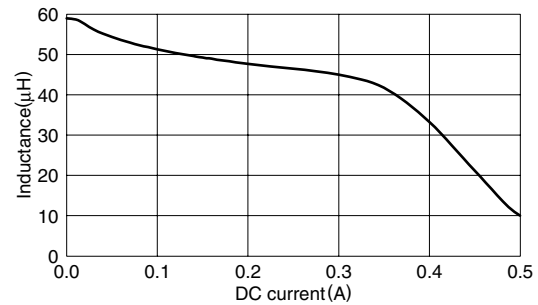
VLF4012AT-220MR51



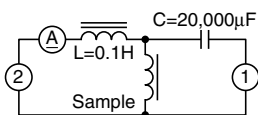
VLF4012AT-330MR39



VLF4012AT-470MR30



TEST CIRCUIT



- 1: LCR meter 4285A=100kHz
- 2: DC constant current