

**(0.635 mm) .025" PITCH • RUGGED HIGH-SPEED HEADERS & SOCKETS**

**ERM6** - **POSITIONS PER ROW** - **01.5** - **PLATING OPTION** - **DV** - **A** - **OPTION** - **K** - **"X"R**

**-10, -20, -30,**  
**-40, -50, -60**  
(Standard Sizes)

**-L**  
= 10 μ" (0.25 μm)  
Gold on contact,  
Matte Tin on tail

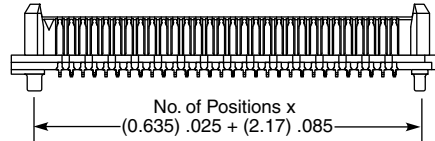
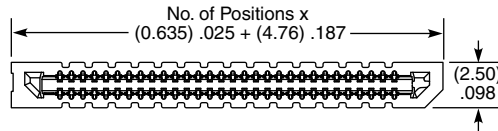
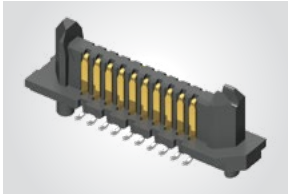
(Leave Blank for  
No Weld Tab Pin)

**-WT**  
= Weld Tab

**-TR**  
= Tape & Reel

**-FR**  
= Full Reel Tape & Reel  
(must order maximum quantity  
per reel; contact Samtec for  
quantity breaks)

**ERM6**  
Board Mates:  
**ERM6**



**MATED HEIGHT\***

ERF6 LEAD STYLE	ERM6 LEAD STYLE
-03.5	(5.00) .197

\*Processing conditions will affect mated height.

View complete specifications at: [samtec.com?ERM6](http://samtec.com?ERM6)

**ERF6** - **POSITIONS PER ROW** - **03.5** - **PLATING OPTION** - **DV** - **A** - **OPTION** - **K** - **"X"R**

**-10, -20, -30,**  
**-40, -50, -60**  
(Standard Sizes)

**-L**  
= 10 μ" (0.25 μm)  
Gold on contact,  
Matte Tin on tail

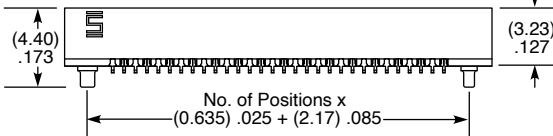
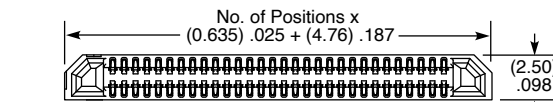
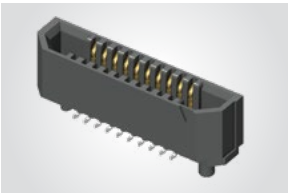
(Leave Blank for  
No Weld Tab Pin)

**-WT**  
= Weld Tab

**-TR**  
= Tape & Reel

**-FR**  
= Full Reel Tape & Reel  
(must order maximum quantity  
per reel; contact Samtec for  
quantity breaks)

**ERF6**  
Board Mates:  
**ERM6**



**MATED HEIGHT\***

ERF6 LEAD STYLE	ERM6 LEAD STYLE
-03.5	(5.00) .197

\*Processing conditions will affect mated height.

View complete specifications at: [samtec.com?ERF6](http://samtec.com?ERF6)

**Notes:**

Kapton pad and tape & reel packaging are standard.  
Some lengths, styles and options are non-standard, non-returnable.

# Mouser Electronics

Authorized Distributor

Click to View Pricing, Inventory, Delivery & Lifecycle Information:

[Samtec:](#)

[ERF6-10-03.5-L-DV-A-K-TR](#) [ERF6-20-03.5-L-DV-A-K-TR](#) [ERF6-30-03.5-L-DV-A-K-TR](#) [ERF6-40-03.5-L-DV-A-K-TR](#)  
[ERF6-50-03.5-L-DV-A-K-TR](#) [ERF6-60-03.5-L-DV-A-K-TR](#)