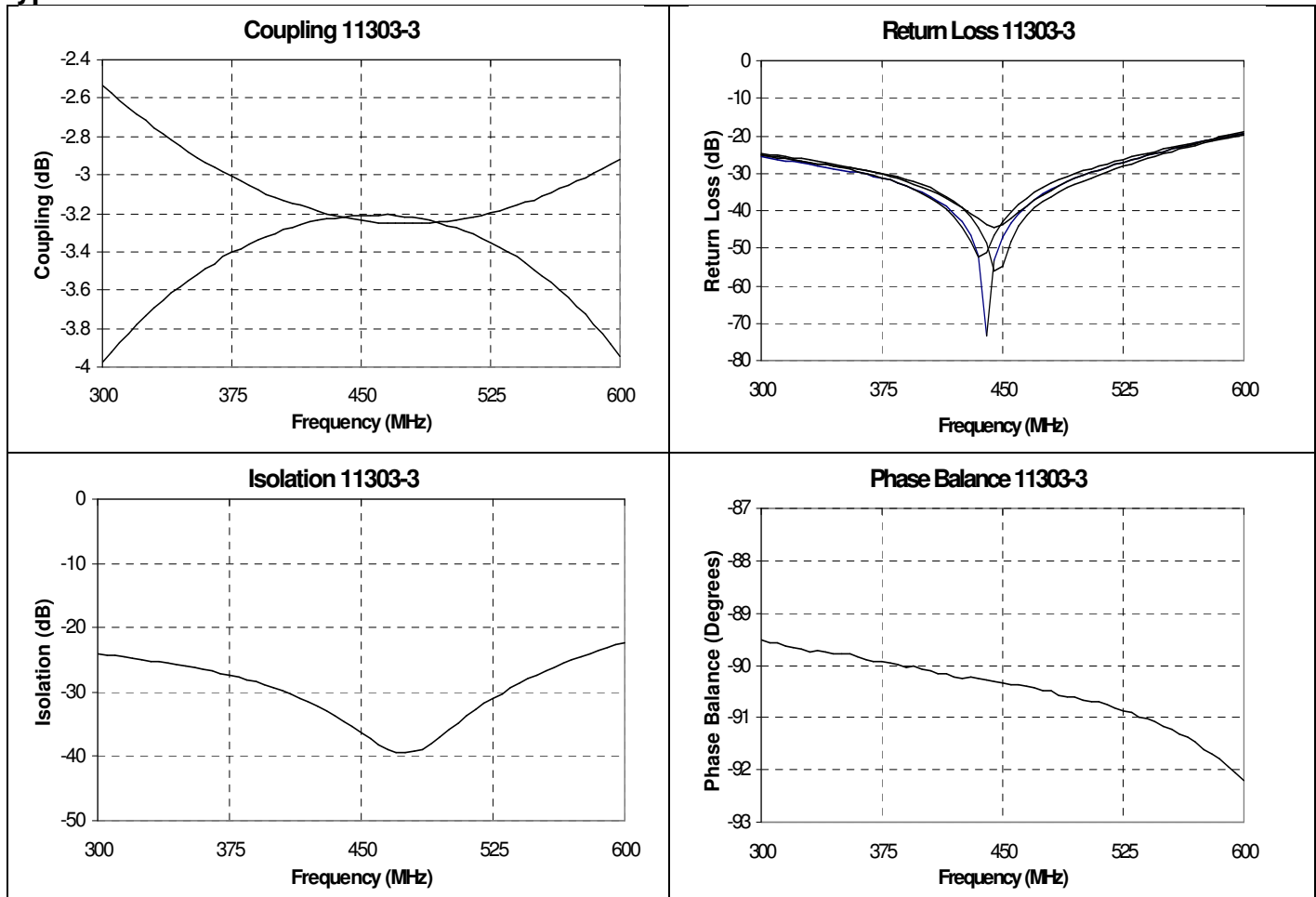
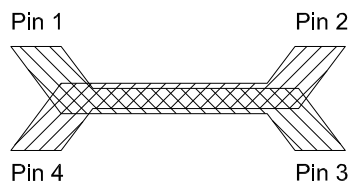


Typical Performance: 300 MHz to 600 MHz.



Pin Configuration

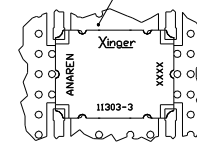


Hybrid Coupler Pin Configuration

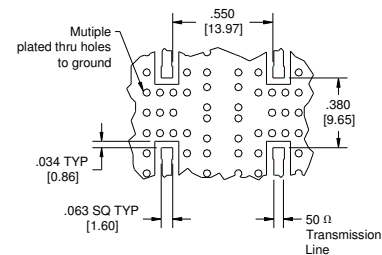
	Pin 1	Pin 2	Pin 3	Pin 4
Configuration #1	Input	Isolated	-3dB, -90°	-3dB, 0°
Configuration #2	Isolated	Input	-3dB, 0°	-3dB, -90°
Configuration #3	-3dB, -90°	-3dB, 0°	Input	Isolated
Configuration #4	-3dB, 0°	-3dB, -90°	Isolated	Input

Mounting Footprint

To ensure proper electrical and thermal performance there must be a ground plane with 100% solder connection underneath the part



Part Is Symmetric About All Axis



Dimensions are in Inches [Millimeters]
11303-3 Mounting Footprint

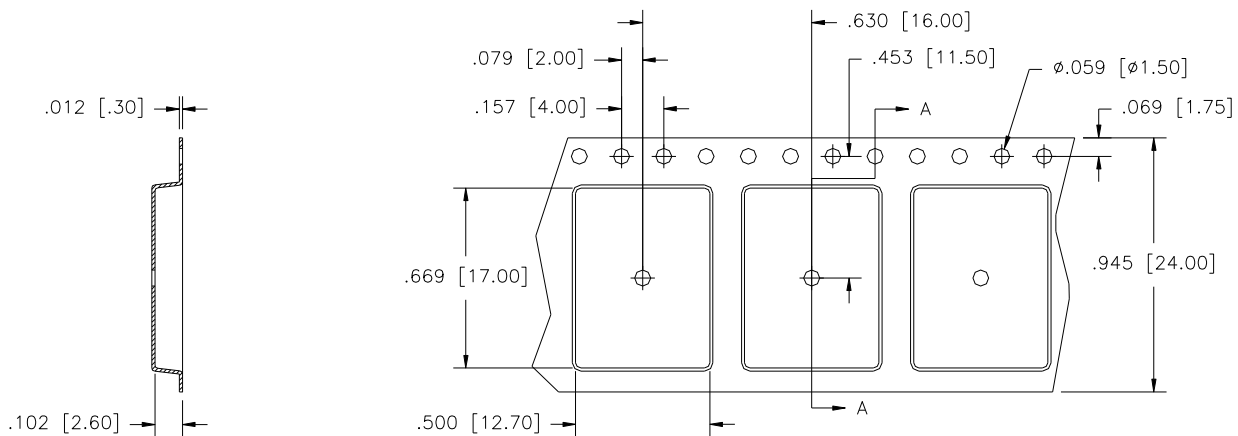
USA/Canada: (315) 432-8909
Toll Free: (800) 544-2414
Europe: +44 2392-232392

Available on Tape and Reel For Pick and Place Manufacturing.



PACKAGING

Parts are available in both reel and tube. Packaging follows EIA 481-2. Parts are provided in tape and reel as shown below. Minimum order quantities are 1000 per reel and 35 per tube.



SECTION A-A



Direction of Part Feed (Unloading)

Dimensions are in inches [mm]

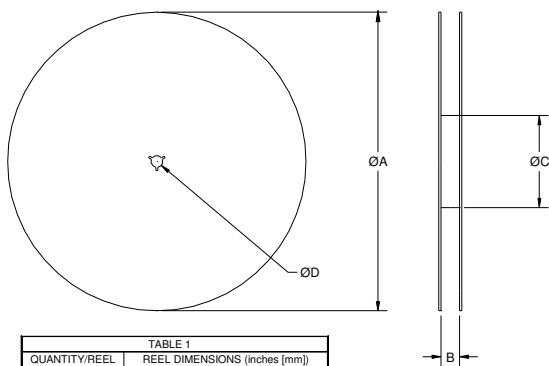
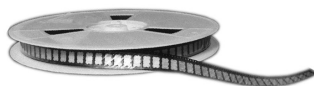


TABLE 1	
QUANTITY/REEL	REEL DIMENSIONS (inches [mm])
1000	ϕA 13.0 [330.0]
	B 0.945 [24.0]
	ϕC 4.017 [102.03]
	ϕD 0.512 [13.0]



Mouser Electronics

Authorized Distributor

Click to View Pricing, Inventory, Delivery & Lifecycle Information:

[Anaren:](#)

[11303-3](#)